

Chickasaw Co. Recorder  
 Cindy Messersmith  
**Fee Book 2009-0458**  
 03/09/2009 @0324PM  
 SCC SEC COR CERT  
 Book: Page: # Pages: 1  
 Total Fees: \$7.00

PREPARED BY : North Star Land Surveyors LLC, 107 Pine Street, New Hampton, IA 50659, Phone : 641-394-3448

**UNITED STATES PUBLIC LAND CORNER CERTIFICATE**  
**OF:**

Land Survey Monuments situated in Section 10, Township 94 North, Range 13 West  
 of the Fifth Principal Meridian, Chickasaw County, Iowa. Previously recorded in  
 bk 153 pg 419 and doc. 2001-1918 in Office of County Recorder.

(book, page, document number, etc.)

(Show reason for preparing this certificate, the evidence and detailed procedures used in establishing the corner positions and monumentation found or placed.)

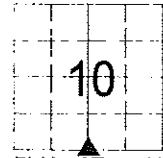
**Monument Description and Remarks :**

S1/4 Corner Section 10 Twp. 94 Rng. 13 W. : Set MAG nail in asphalt pavement per reference ties on Corner Certificates by Gary Casady in bk 153 deeds pg 419 and by Paul Herold in document number 2001-1918 in Office of Chickasaw County Recorder.  
 Reason for recording: New corner monument due to 2008 road resurfacing.

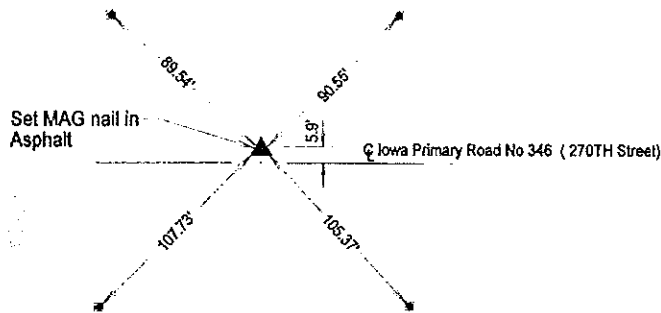


**PLAN - VIEW**

(Show a minimum of three reference ties to durable physical objects, relevant monuments and physical conditions that will enable recovery of the corner.)



Richland Township

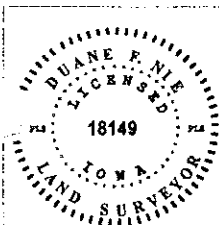


cor. A

**LEGEND**

★ = Found 5/8" rebar in Conc. Mon.

S 1/4 Corner Section 10 Twp. 94 Rng. 13 W.



I hereby certify that this land surveying document was prepared and the related survey work was performed by me or under my direct personal supervision and that I am a duly LICENSED LAND SURVEYOR under the laws of the State of IOWA.

Duane F. Nie March 9, 2009  
 Duane F. Nie License number 18149 Date  
 My license renewal date is December 31, 2010  
 Pages or sheets covered by this seal. This sheet only

List Corners to be Indexed

Corner	Section	Township	Range
S 1/4 Cor.	10	94	13

Section 3-94-13  
 As referred to in  
 Engr. Title Book

FILED 2001-1918  
 RECORDER'S OFFICE  
 CHICKASAW COUNTY, IOWA

2001 SEP 6 AM 9 27

CINDY MESSERSMITH  
 COUNTY RECORDER

TeKIPPE ENGINEERING, P.C., 128 South Vine Street, West Union, Iowa 52176 Phone (563) 422-5131

UNITED STATES PUBLIC LAND SURVEY CORNER CERTIFICATE

OF 3  
 Land Survey Monuments situated in Section 10, Township 94 North, Range 13 West of the Fifth Principal Meridian, CHICKASAW County, Iowa.  
 Previously recorded in (1) none (2) Book 153, Page 419 in County Recorder's Office.  
(book, page, document number, etc.)

(Show reason for preparing this certificate, the evidence and detailed procedures used in establishing the corner positions and monumentation found or placed.)

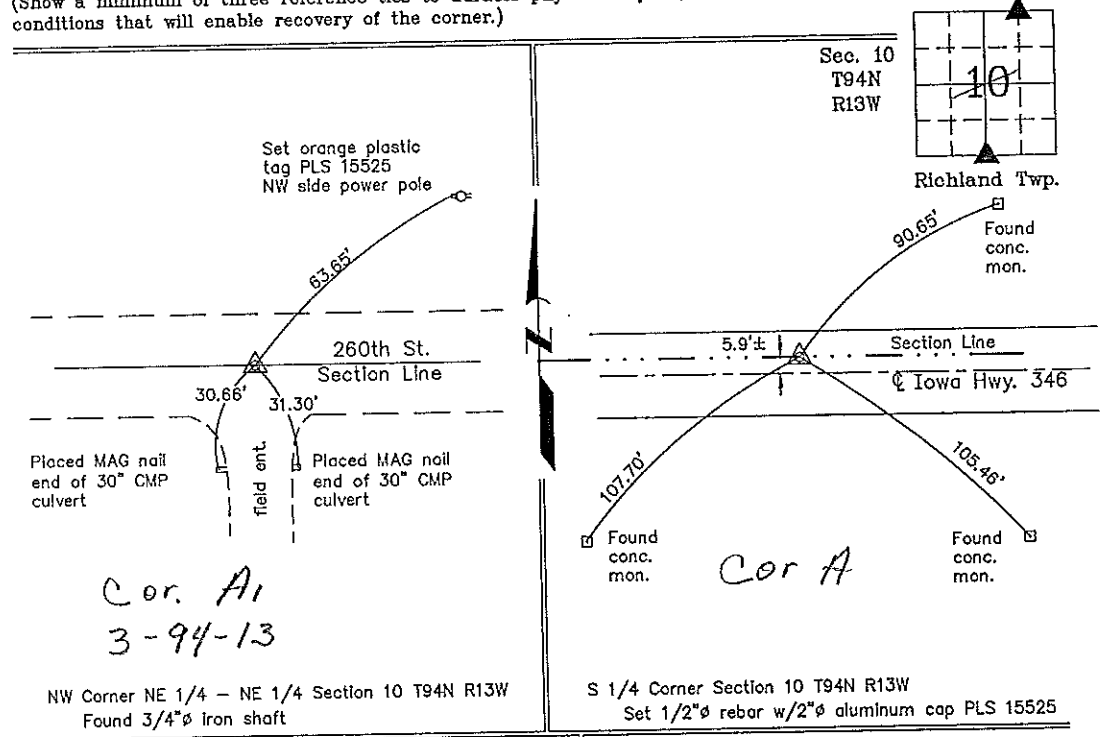
Monument Description and Remarks: (1) NW Corner NE 1/4-NE 1/4 Section 10 T94N R13W: Found 3/4"  $\phi$  iron shaft with information obtained from a Survey and Plat made by Harold H. Blessing recorded in the Chickasaw County Recorder's Office on April 18, 1979 in Deed Book 119, Page 362-365.

(2) S 1/4 Corner Section 10 T94N R13W: Previous Corner Monument was missing. Set 1/2"  $\phi$  rebar w/2"  $\phi$  aluminum cap PLS 15525 using distances from found concrete monuments noted on the previous Section Corner Certificate recorded in the Chickasaw County Recorder's Office in Deed Book 153, Page 419.

PLAN - VIEW

Project Number 01182.LS  
 FR 481 PG. 31-34

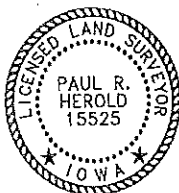
(Show a minimum of three reference ties to durable physical objects, relevant monuments and physical conditions that will enable recovery of the corner.)



Cor. A1  
 3-94-13

NW Corner NE 1/4 - NE 1/4 Section 10 T94N R13W  
 Found 3/4"  $\phi$  Iron shaft

S 1/4 Corner Section 10 T94N R13W  
 Set 1/2"  $\phi$  rebar w/2"  $\phi$  aluminum cap PLS 15525



I hereby certify that this land surveying document was prepared and the related survey work was performed by me or under my direct personal supervision and that I am a duly licensed Land Surveyor under the laws of the State of Iowa.

*Paul R. Herold* 9-5-01  
 Paul R. Herold Date  
 License number 15525  
 My license renewal date is December 31, 2002.  
 Sheets covered by this seal: Individual

List Corners to be Indexed			
Corners	Section	Twp.	Range
NW-NE-NE	10	94N	13W
S 1/4	10	94N	13W

Filed 9-10-01

County Engineer  
 A.L.

# UNITED STATES PUBLIC LAND SURVEY CORNER CERTIFICATE

OF

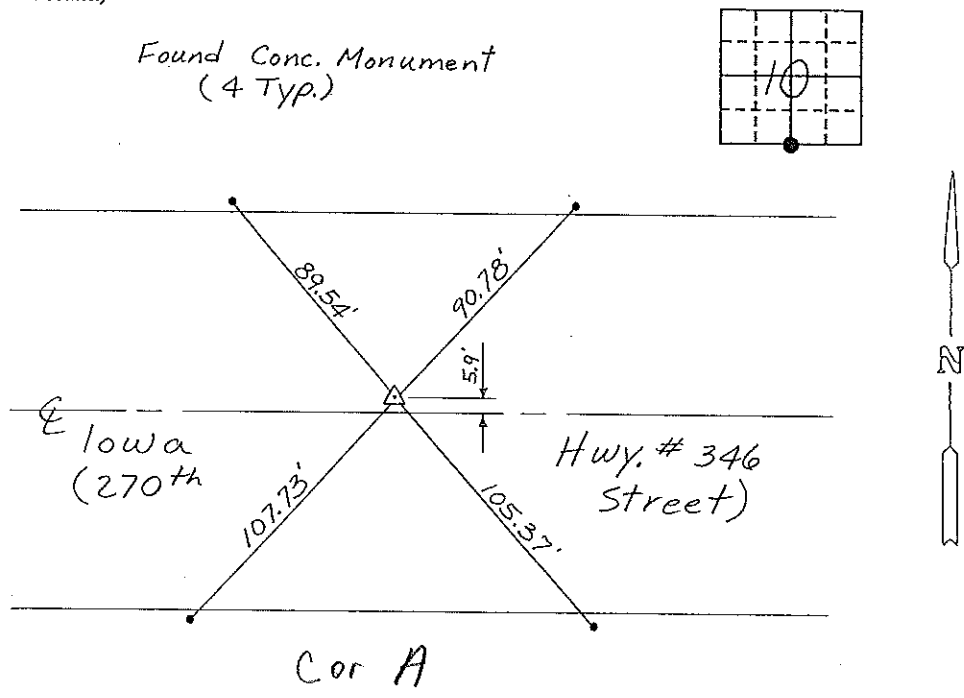
Land Survey Monuments situated in Section 10, Township 94 NORTH, Range 13 WEST, of the Fifth Principal Meridian, CHICKASAW County, Iowa. Previously recorded in NONE in County Recorder's Office.

(book, page, document number, etc.)  
(Show reason for preparing this certificate, the evidence and detailed procedures used in establishing the corner positions and monumentation found or placed.)

Monument Description and Remarks: 1/4 CORNER, SECTION 10-T94N-R13W:  
Found IDOT Aluminum Cap in Asphalt.

### PLAN - VIEW

(Show a minimum of three reference ties to durable physical objects, relevant monuments and physical conditions that will enable recovery of the corner.)

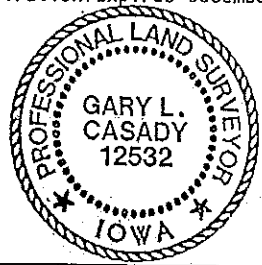


### 1/4 CORNER, SECTION 10-T94N-R13W

I hereby certify that the survey work was completed and this certificate was prepared by me or under my direct personal supervision and that I am a duly registered land surveyor under the laws of the state of Iowa.

Signature: Gary L. Casady  
Name typed or printed: Gary L. Casady  
Date: 12-8-93 Reg. No. 12532  
My Registration Expires December 31, 1994

Corners	List Corners to be Indexed Section	Twp	Range
<u>1/4</u>	<u>10</u>	<u>94N</u>	<u>13W</u>
	<u>Cor A<sup>10</sup>-94-13</u>		



SEAL

*Placed in the Book 12/17/93*