

2007-2075
10/24/2007

TeKIPPE ENGINEERING, P.C., 128 South Vine Street, West Union, Iowa 52176 Phone (319) 422-5131

UNITED STATES PUBLIC LAND SURVEY CORNER CERTIFICATE

OF

Land Survey Monuments situated in Section 14, Township 94 North, Range 13 West of the Fifth Principal Meridian, CHICKASAW County, Iowa. Previously recorded in W 1/4 Cor-none, E 1/4 Cor-Bk. 160, Pg. 422 in County Recorder's Office. (book, page, document number, etc.)

(Show reason for preparing this certificate, the evidence and detailed procedures used in establishing the corner positions and monumentation found or placed.)

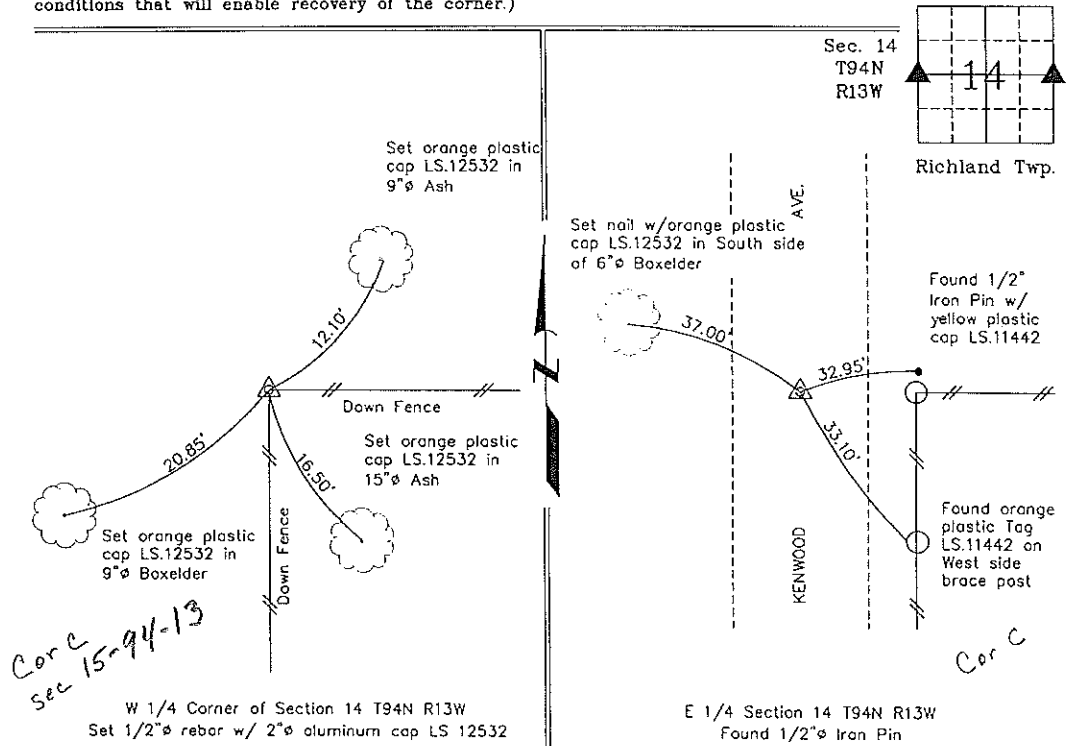
Monument Description and Remarks: W 1/4 Corner of Section 14 T94N R13W: Set 1/2"Ø rebar w/ 2"Ø aluminum cap LS 12532 @ intersection of old, down fences.

E 1/4 Corner of Section 14 T94N R13W: Found 1/2"Ø iron pin recorded in Deed Book 160 Page 422. Updated certificate because one reference tie is gone.

PLAN - VIEW

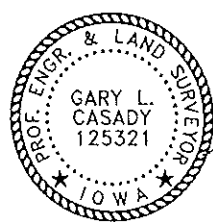
Project Number 07168 LS
FA 45M PG. 42-48

(Show a minimum of three reference ties to durable physical objects, relevant monuments and physical conditions that will enable recovery of the corner.)



Corc
Sec 15-94-13

Corc



I hereby certify that this land surveying document was prepared and the related survey work was performed by me or under my direct personal supervision and that I am a duly licensed Land Surveyor under the laws of the State of Iowa
Gary L. Casady 10-23-07
Date
Gary L. Casady
License number 12532
My license renewal date is December 31, 2008
Sheets covered by this seal: Individual

List Corners to be Indexed			
Corners	Section	Twp.	Range
W 1/4	14	94N	13W
E 1/4	14	94N	13W

X:\Section Corners\Sec. 14\14-94-13ko.dwg

COUNTY ENGINEER'S COPY