

Section 9-94-13
As referred to in
Eng. Fee Book

Chickasaw Co. Recorder
Cindy Messersmith
Fee Book 2009-0456
03/09/2009 @0317PM
SCC SEC COR CERT # Pages: 1
Book: Page: \$7.00
Total Fees:

PREPARED BY : North Star Land Surveyors LLC, 107 Pine Street, New Hampton, IA 50659, Phone : 641-394-3448

UNITED STATES PUBLIC LAND CORNER CERTIFICATE

OF: 9

Land Survey Monuments situated in Section 10, Township 94 North, Range 13 West of the Fifth Principal Meridian, Chickasaw County, Iowa. Previously recorded in bk 153 pg 418 in Office of County Recorder.

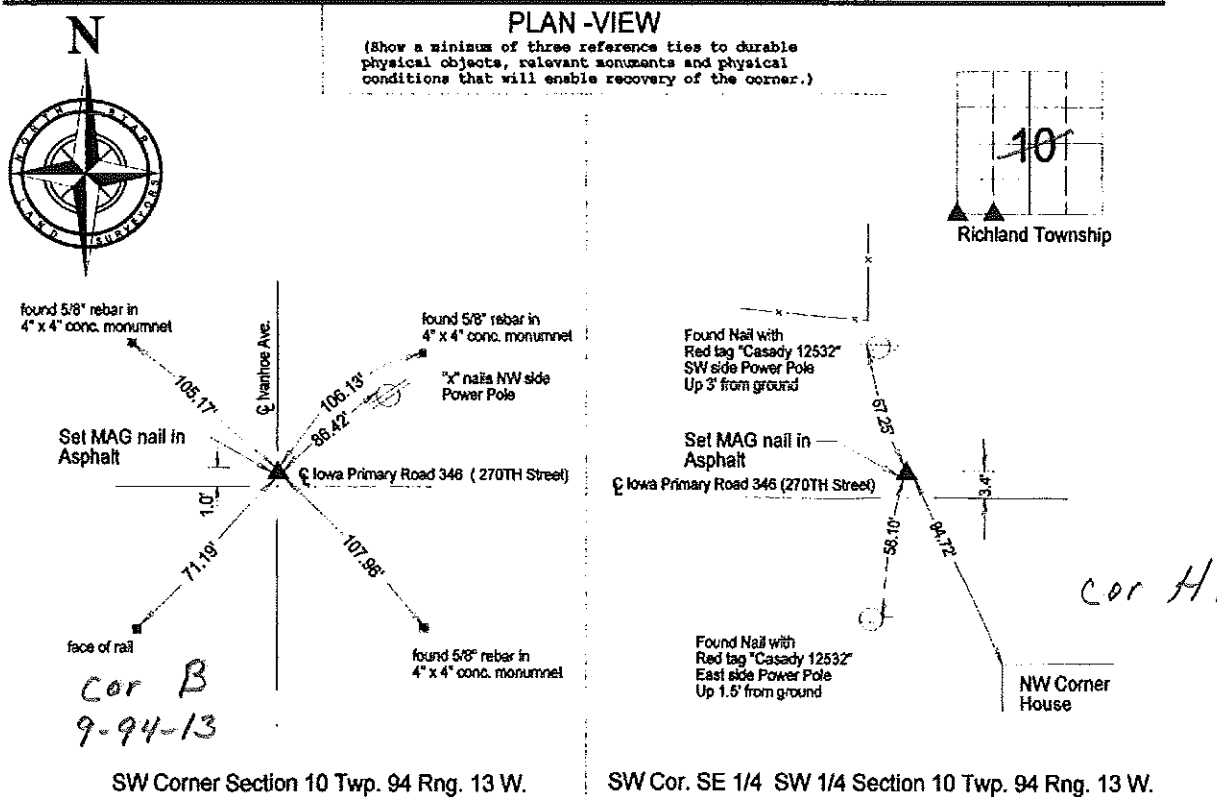
(book, page, document number, etc.)

(Show reason for preparing this certificate, the evidence and detailed procedures used in establishing the corner positions and monumentation found or placed.)

Monument Description and Remarks :

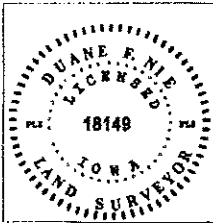
SW Corner Section 10 Twp. 94 Rng. 13 W. : Set MAG nail in asphalt pavement per reference ties on Corner Certificate by Gary Casady recorded in bk 153 deeds pg 419 in Office of Chickasaw County Recorder.
Reason for recording: Set new corner monument due to 2008 road resurfacing.

SW Cor. SE 1/4 SW 1/4 Section 10 Twp. 94 Rng. 13 W. : Set MAG nail in asphalt pavement per reference ties recorded on Corner Certificate by Gary Casady recorded in bk 153 deeds pg 419 in Office of Chickasaw County Recorder. Corner falls 0.52 feet East of mid-point between SW Corner and S 1/4 Corner of said Section.
Reason for recording: Set new corner monument due to 2008 road resurfacing.



SW Corner Section 10 Twp. 94 Rng. 13 W.

SW Cor. SE 1/4 SW 1/4 Section 10 Twp. 94 Rng. 13 W.



I hereby certify that this land surveying document was prepared and the related survey work was performed by me or under my direct personal supervision and that I am a duly LICENSED LAND SURVEYOR under the laws of the State of IOWA.
Duane F. Nie March 9, 2009
Duane F. Nie License number 18149 Date
My license renewal date is December 31, 2010
Pages or sheets covered by this seal. This sheet only

List Corners to be Indexed

Corner	Section	Township	Range
SW Cor.	10	94	13
SW Cor. SE 1/4 SW 1/4	10	94	13

Section 9-94-13
 As referred to in
 Engr. Trc. Book

SLS19-90

UNITED STATES PUBLIC LAND SURVEY CORNER CERTIFICATE

OF 9

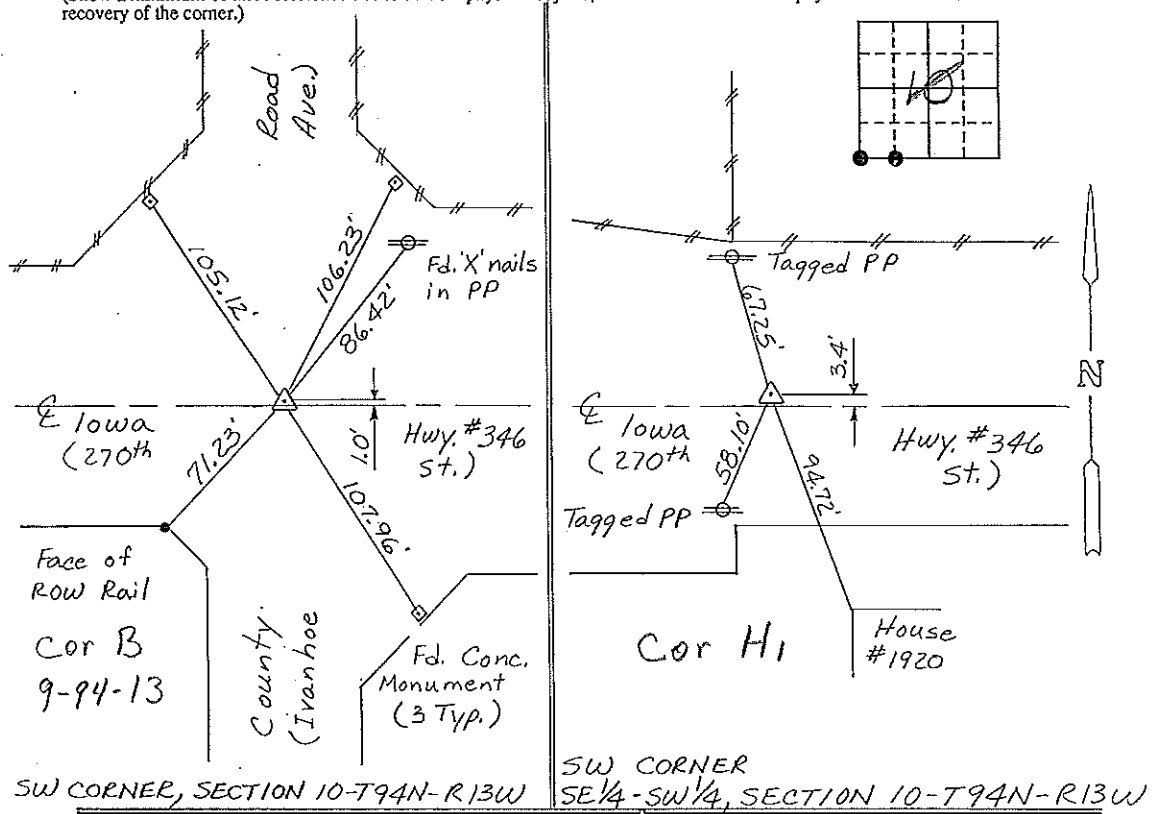
Land Survey Monuments situated in Section 10, Township 94 NORTH, Range 13 WEST, of the Fifth Principal Meridian, CHICKASAW County, Iowa. Previously recorded in NONE in County Recorder's Office.

(Show reason for preparing this certificate, the evidence and detailed procedures used in establishing the corner positions and monumentation found or placed.)

Monument Description and Remarks: SW CORNER, SECTION 10-T94N-R13W:
Found IDOT Aluminum Cap in Asphalt.
SW CORNER, SE 1/4-SW 1/4, SECTION 10-T94N-R13W:
Set PK Nail in Asphalt Midway on Line between SW Corner & S 1/4 Corner of said Section.

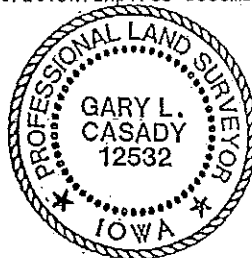
PLAN - VIEW

(Show a minimum of three reference ties to durable physical objects, relevant monuments and physical conditions that will enable recovery of the corner.)



I hereby certify that the survey work was completed and this certificate was prepared by me or under my direct personal supervision and that I am a duly registered land surveyor under the laws of the state of Iowa.

Signature: Gary L. Casady
 Name typed or printed: Gary L. Casady
 Date: 12-8-93 Reg. No. 12532
 My Registration Expires December 31, 1994



SEAL

Corners	List Corners to be Indexed		
	Section	Twp	Range
SW ✓	10	94N	13W B9-94-13
SW Cor.			
SE 1/4-SW 1/4	10	94N	13W

Cor B1-10-94-13
 Placed in
 Trc. Book
 12/17/93