

Prepared by & Return to Herold - Reicks Surveying, 10 East Main Street, New Hampton, IA 50659, Ph. 641-994-2725

UNITED STATES PUBLIC LAND SURVEY CORNER CERTIFICATE

Land Survey Monuments situated in Section 8, Township 94 North, Range 13 West of the Fifth Principal Meridian, Chickasaw County, Iowa. 1., 2.) Previously recorded in Bk. 157, Pg. 381 in the County Recorder's office.

This certificate is being prepared in compliance with Iowa Code Chapter 355.11 because:

- There is no certificate on file for this corner.
- There are no longer three valid ties of record.
- 1., 2.) There are changes to reference ties of record.
- There is change of monumentation of record.
- To clarify description of record monument (ties).

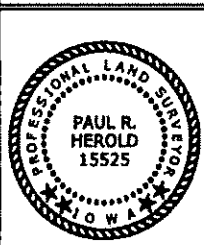
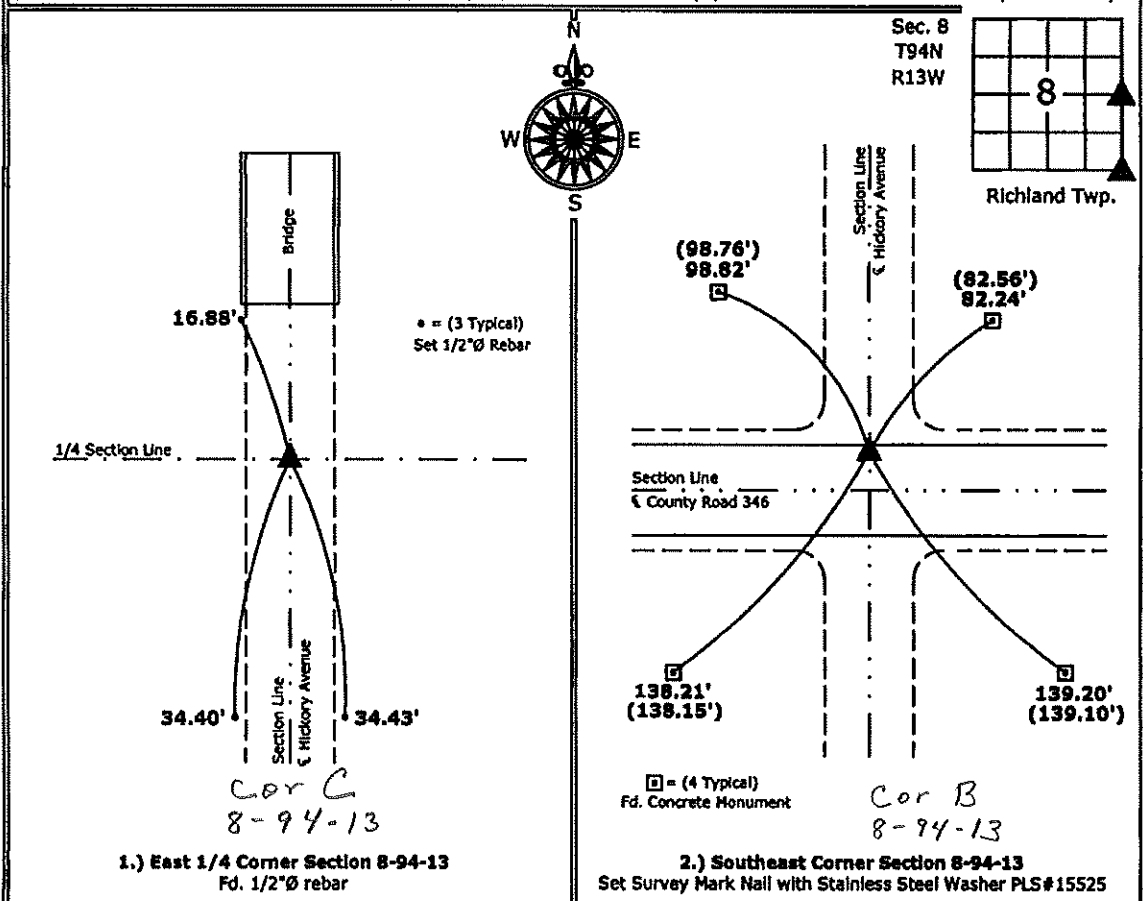
Monument Description and Remarks:

1.) East 1/4 Corner: Found 1/2"Ø rebar from information obtained from the previous Section Corner Certificate, all ties were missing, set new ties to update corner.

2.) Southeast Corner: Set Survey Mark Nail w/Stainless Steel Washer PLS 15525 from information obtained from the IDOT District Office.

PLAN - VIEW

(Show a minimum of three reference ties to durable physical objects, relevant monuments and physical conditions that will enable recovery of the corner.)



I hereby certify that this land surveying document was prepared and the related survey work was performed by me or under my direct personal supervision and that I am a duly licensed Land Surveyor under the laws of the State of Iowa.

Paul R. Herold 1-13-12
 Paul R. Herold Date:

License number 15525
 My license renewal date is December 31, 2012.
 Sheets covered by this seal: Individual sheet only

List Corners to be Indexed			
Corners	Section	Twp.	Range
E 1/4	8	94	13
SE	8	94	13

Project Number: 2012-4
 FB: Chickasaw County 4, Pgs. 26, 27

File: S:_CSD Projects\2012\004_HRS\SCC Dwg\2012-004-SCC.dwg, 1/13/2012 10:42:39 AM

UNITED STATES PUBLIC LAND SURVEY CORNER CERTIFICATE

OF

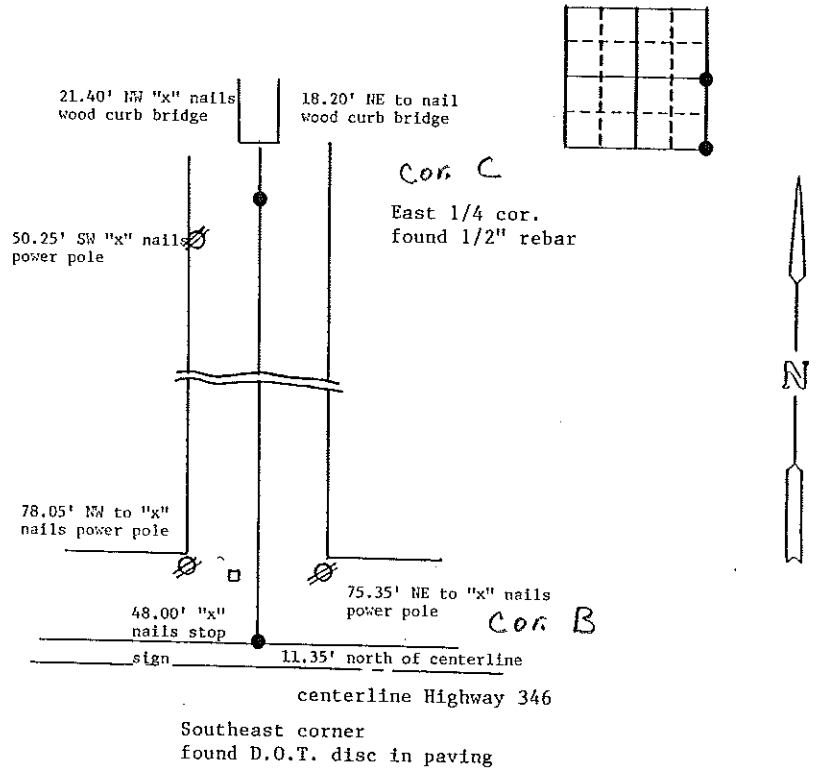
Land Survey Monuments situated in Section 8, Township 94 North, Range 13 West, of the Fifth Principal Meridian, Chickasaw County, Iowa.
Previously recorded in N/A in County Recorder's Office.
(book, page, document number, etc.)

(Show reason for preparing this certificate, the evidence and detailed procedures used in establishing the corner positions and monumentation found or placed.)

Monument Description and Remarks: see below

PLAN - VIEW

(Show a minimum of three reference ties to durable physical objects, relevant monuments and physical conditions that will enable recovery of the corner.)



I hereby certify that the survey work was completed and this land surveying document was prepared by me or under my direct personal supervision and that I am a duly registered land surveyor under the laws of the state of Iowa

Signature: Steve Busse
Name typed or printed: STEVE BUSSE

Date: 4/29/95 Reg. No. 9018

My registration renewal date is December 31, 1996

SEAL

Corners	List Corners to be Indexed		
	Section	Twp	Range
SE cor.	8	94	13
East 1/4 cor.	8	94	13

Placed in tie Book 5/3/95