

Instrument #: 2020-0115  
 01/27/2020 02:29:44 PM Total Pages: 1  
 SCC SECTION CORNER CERTIFICATES  
 Recording Fee: \$ 7.00  
 Shirley Troyna, Recorder, Chickasaw County Iowa

PREPARED BY / RETURN TO: MIRANDA K. EILDERS IOWA DEPARTMENT OF TRANSPORTATION 428 43rd ST. SW MASON CITY, IA 50401 841-423-7684

UNITED STATES PUBLIC LAND SURVEY CORNER CERTIFICATE  
 OF

Land Survey Monuments situated in Section 18, Township 94N, Range 12W  
 of the Fifth Principal Meridian, CHICKASAW County, Iowa.

Previously recorded in INST. #2017-2108 in County Recorder's Office.  
 (book, page, document number, etc.)

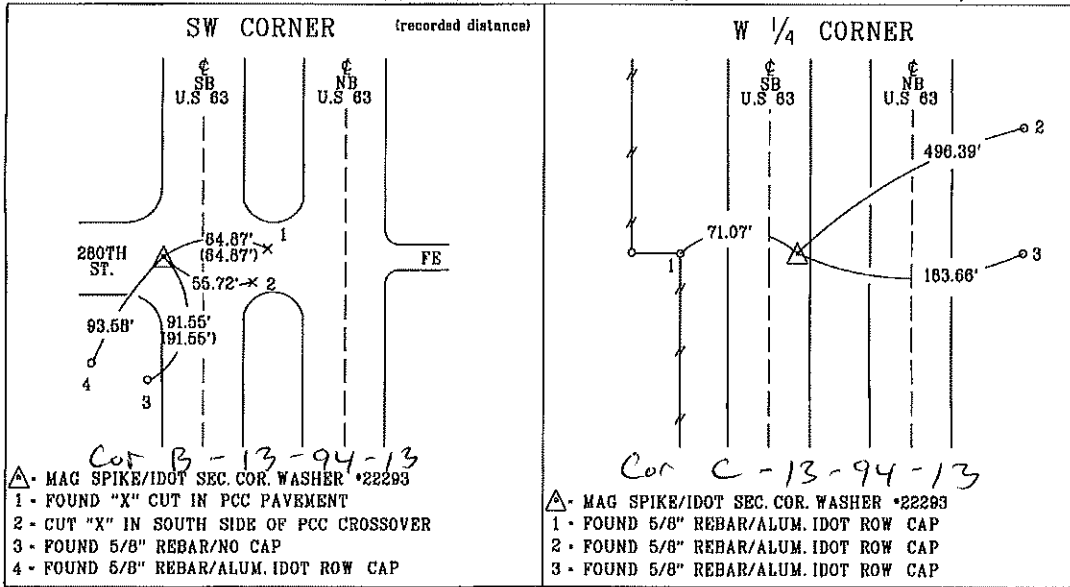
(Show reason for preparing this certificate, the evidence and detailed procedures used in establishing the corner positions and monumentation found or placed.)

Monument Description and Remarks: SW CORNER: REPLACED PREVIOUSLY FOUND SURVEY MARK NAIL/IDOT WASHER WITH MAG SPIKE/IDOT SEC. COR. #22293 11' WEST OF C SOUTH BOUND LANE OF US. 63 PER PREVIOUS CERT OF RECORD INSTRUMENT #2017-2108 AFTER RESURFACING PROJECT MP-063-2(702)-195--76-19.  
REASON FOR CERT: MONUMENTATION AND TIES HAVE CHANGED.

W 1/4 CORNER: REPLACED PREVIOUSLY FOUND SURVEY MARK NAIL/IDOT WASHER WITH MAG SPIKE/IDOT SEC. COR. WASHER #22293 10.9' EAST OF C SOUTH BOUND LANE OF US. 63 PER IDOT INFORMATION OF RECORD AFTER RESURFACING PROJECT MP-063-2(702)-195--76-19.  
REASON FOR CERT: MONUMENTATION AND TIES HAVE CHANGED.

PLAN - VIEW

(Show a minimum of three reference ties to durable physical objects, relevant monuments and physical conditions that will enable recovery of the corner.)

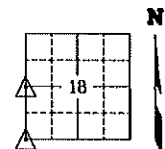


SW CORNER (recorded distance)  
 280TH ST.  
 U.S. 63  
 84.87' (84.87')  
 55.72'  
 93.50'  
 91.55'  
 1  
 2  
 3  
 4  
 Cut B - 13-94-13  
 1 - MAG SPIKE/IDOT SEC. COR. WASHER #22293  
 2 - CUT "X" IN SOUTH SIDE OF PCC CROSSOVER  
 3 - FOUND 5/8" REBAR/NO CAP  
 4 - FOUND 5/8" REBAR/ALUM. IDOT ROW CAP

W 1/4 CORNER  
 U.S. 63  
 71.07'  
 490.39'  
 163.66'  
 1  
 2  
 3  
 Cor C - 13-94-13  
 1 - MAG SPIKE/IDOT SEC. COR. WASHER #22293  
 2 - FOUND 5/8" REBAR/ALUM. IDOT ROW CAP  
 3 - FOUND 5/8" REBAR/ALUM. IDOT ROW CAP

List Corners to be Indexed			
Corner	Section	Township	Range
SW CORNER	18	94N	12W
W 1/4 CORNER	18	94N	12W

I hereby certify that this land surveying document was prepared and the related survey work was performed by me or under my personal supervision and that I am duly licensed professional land surveyor under the laws of the state of Iowa.  
 Miranda K. Eilders 1-15-2020  
 Miranda K. Eilders Date  
 License number 22293  
 My license renewal date is December 31, 2021  
 Pages or sheets covered by this seal. 1



19-18-94-12

drawn by: TN  
 tied by: TM,ME  
 right-of-way