

UNITED STATES PUBLIC LAND SURVEY CORNER CERTIFICATE

SLSI 9-91

Section 12-94-13
As referred to in
Engr. Tie Book

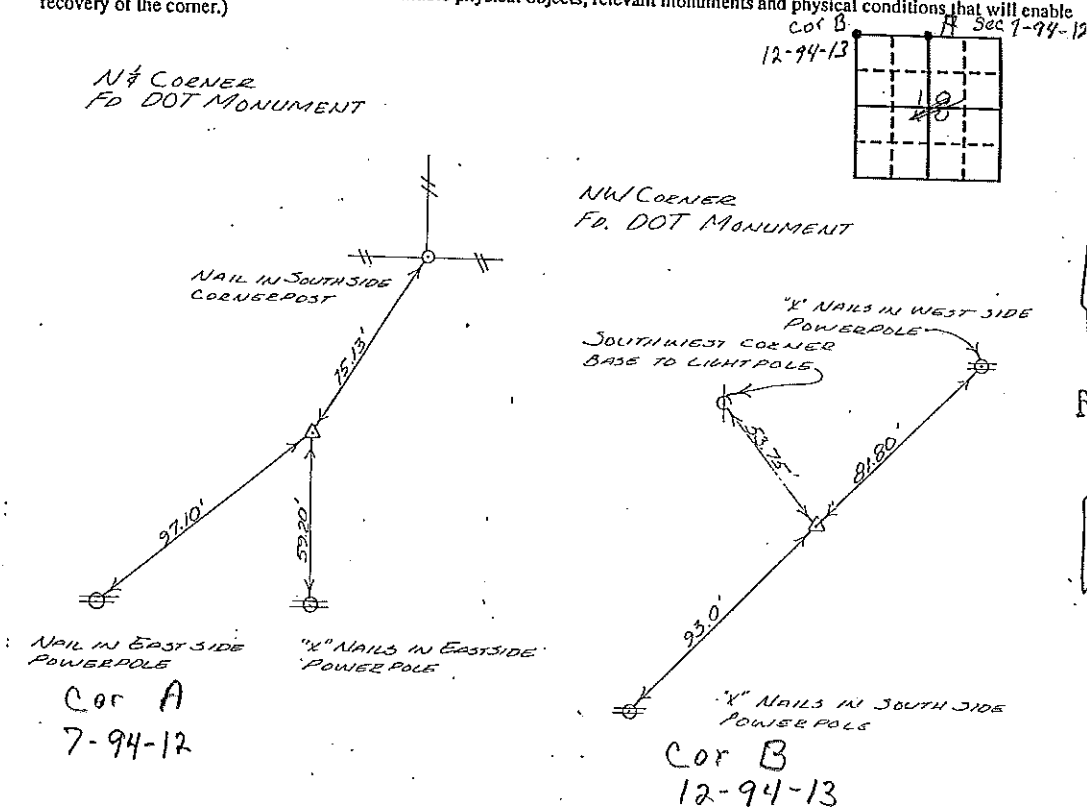
OF 12
Land Survey Monuments situated in Section 18, Township 94N, Range 12N, of the Fifth Principal Meridian, Chickasaw County, Iowa. Previously recorded in _____ in County Recorder's Office.

(Show reason for preparing this certificate, the evidence and detailed procedures used in establishing the corner positions and monumentation found or placed.)

Monument Description and Remarks: _____

PLAN - VIEW

(Show a minimum of three reference ties to durable physical objects, relevant monuments and physical conditions that will enable recovery of the corner.)



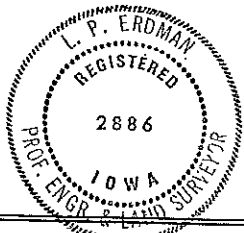
I hereby certify that the survey work was completed and this certificate was prepared by me or under my direct personal supervision and that I am a duly registered land surveyor under the laws of the state of Iowa.

Signature: L. P. Erdman
Name typed or printed: L. P. ERDMAN

Date: 12-08-92 Reg. No. 2886

Corners	Section	Twp	Range
NE	18	94	12
NW	18	94	12 b

Placed in
tie book 2/2



SEAL