

Instrument #: 2020-0116
 01/27/2020 02:28:44 PM Total Pages: 1
 SCC SECTION CORNER CERTIFICATES
 Recording Fee: \$ 7.00
 Shirley Troyna, Recorder, Chickasaw County Iowa



PREPARED BY / RETURN TO: MIRANDA K. EILDERS IOWA DEPARTMENT OF TRANSPORTATION 428 43rd ST. SW MASON CITY, IA 50401 841-423-7584

UNITED STATES PUBLIC LAND SURVEY CORNER CERTIFICATE

OF

Land Survey Monuments situated in Section 19, Township 94N, Range 12W
 of the Fifth Principal Meridian, CHICKASAW County, Iowa.

Previously recorded in INSTRUMENT • 2017-2107 in County Recorder's Office.
(book, page, document number, etc.)

(Show reason for preparing this certificate, the evidence and detailed procedures used in establishing the corner positions and monumentation found or placed.)

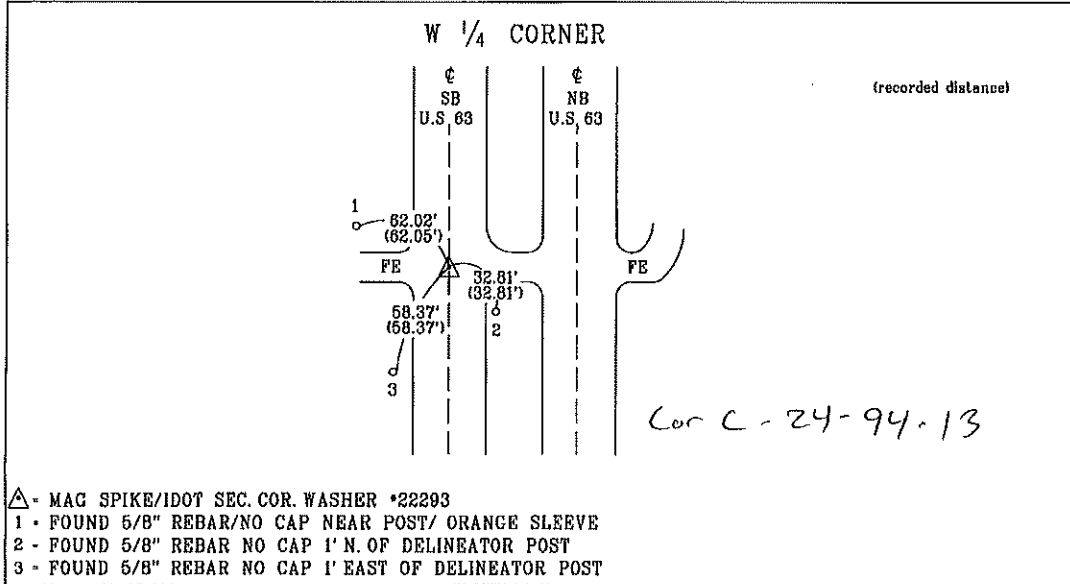
Monument Description and Remarks: W 1/4 CORNER: REPLACED PREVIOUSLY FOUND SURVEY MARK NAIL/ STAINLESS STEEL WASHER PLS 15525 WITH A MAG SPIKE/IDOT SEC. COR. WASHER *22293 NEAR C OF SOUTH BOUND LANE OF U.S. 63 PER PREVIOUS CERT OF RECORD 2017-2107 AFTER RESURFACING PROJECT

MP-063-2(702)-195--76-19.

REASON FOR CERT: MONUMENTATION HAS CHANGED.

PLAN - VIEW

(Show a minimum of three reference ties to durable physical objects, relevant monuments and physical conditions that will enable recovery of the corner.)

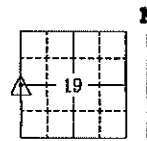


List Corners to be Indexed
 Corner Section Township Range

W 1/4 CORNER 19 94N 12W



I hereby certify that this land surveying document was prepared and the related survey work was performed by me or under my personal supervision and that I am duly licensed professional Land Surveyor under the laws of the state of Iowa.
Miranda K. Eilders 1-15-2020
 Miranda K. Eilders Date
 License number 22293
 My License renewal date is December 31, 2021
 Pages or sheets covered by this seal. 1



Instrument #: 2017-2107
 12/13/2017 02:48:43 PM Total Pages: 1
 SCC SECTION CORNER CERTIFICATES
 Recording Fee: \$ 7.00
 Cindy Messersmith, Recorder, Chickasaw County Iowa



Prepared by & Return to: Herold - Recks Surveying, 10 East Main Street, New Hampton, IA 50659, Ph. 641-394-2725

United States Public Land Survey Corner Certificate

Land Survey Monument situated in
 Section 19, Township 94 North, Range 12 West of the Fifth Principal Meridian, Chickasaw County, Iowa.
 On file in Book 149, Page 270 in the County Recorder's office.

This certificate is being prepared in compliance with Iowa Code Chapter 355.11 because:

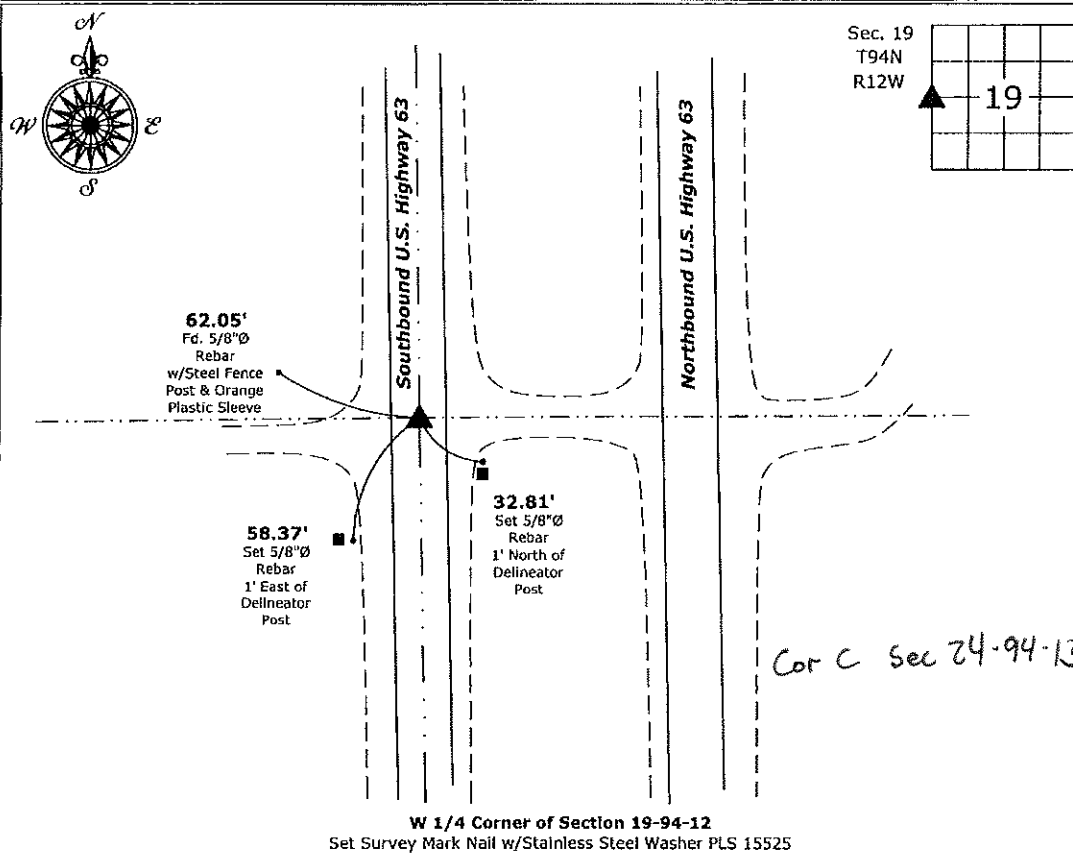
- There is no certificate on file for this corner.
- There are no longer three valid ties of record.
- There are changes to reference ties of record.
- There is change of monumentation of record.
- To clarify description of record monument (ties).

Monument Description and Remarks:

W 1/4 Corner: Set Survey Mark Nail w/Stainless Steel Washer PLS 15525 at the record location utilizing information from a Warranty Deed for acquisition of Right-of-Way for the Iowa Department of Transportation, Recorded April 28, 1999, Book 171, Pages 276-278, on file in the Chickasaw County recorder's Office, New Hampton, Iowa.
 The Previous monument was covered by an HMA Overlay.

Plan View

(Show a minimum of three reference ties to durable physical objects, relevant monuments and physical conditions that will enable recovery of the corner.)



W 1/4 Corner of Section 19-94-12
 Set Survey Mark Nail w/Stainless Steel Washer PLS 15525



I hereby certify that this land surveying document was prepared and the related survey work was performed by me or under my direct personal supervision and that I am a duly licensed Land Surveyor under the laws of the State of Iowa.
Paul R. Herold 12-13-17
 Paul R. Herold Date:
 License number 15525
 My license renewal date is December 31, 2018.
 Sheets covered by this seal: Individual sheet only

List Corner to be Indexed			
Corner	Section	Twp.	Range
W 1/4	19	94	12
Project Number: 2017-100			
FB: Chickasaw County 8, Pgs. 49-50			

File: S:_CSD Projects\County Control Systems\CHICKASAW\CHICK-49.dwg, 12/13/2017 10:11:08 AM

UNITED STATES PUBLIC LAND SURVEY CORNER CERTIFICATE

Land Survey Monuments situated in Section 19, Township 94 North, Range 13 West, of the Fifth Principal Meridian, Chickasaw County, Iowa.

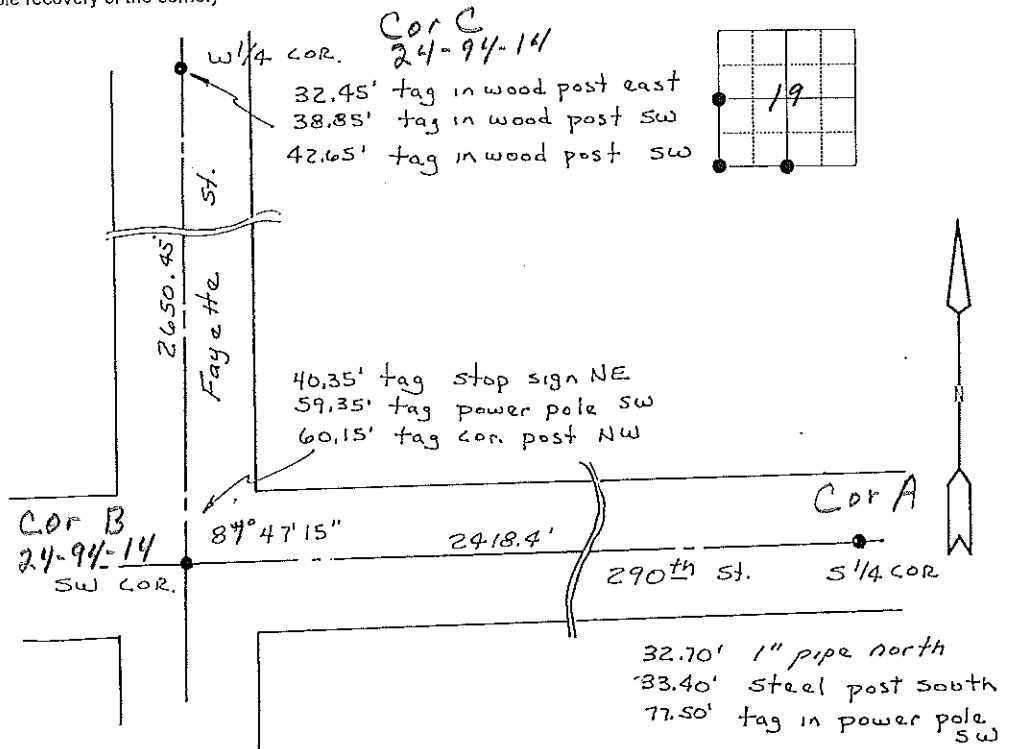
Previously recorded in N/A in County Recorder's Office.
(book, page, document number, etc.)

(Show reason for preparing this certificate, the evidence and detailed procedures used in establishing the corner positions and monumentation found or placed.)

Monument Description and Remarks: Found pin with alum. cap at West 1/4 cor.
Found spike with ribbon over iron pin at Southwest cor.
Found pipe, pinched at top at South 1/4 corner.

PLAN - VIEW

(Show a minimum of three reference ties to durable physical objects, relevant monuments and physical conditions that will enable recovery of the corner)



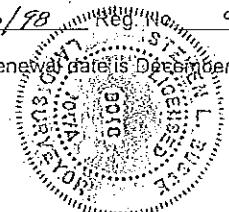
I hereby certify that the survey work was completed and this land surveying document was prepared by me or under my direct personal supervision and that I am a duly licensed land surveyor under the laws of the state of Iowa

Signature: Steve Busse
 Name typed or printed STEVE BUSSE

Date: 11/3/98 Reg. No. 9018

My license renewal date is December 31, 1998

SEAL



Corners	Section	Twp	Range
W 1/4 COR.	19	94	13
SW COR.	19	94	13
S 1/4 COR.	19	94	13