

PREPARED BY / RETURN TO: MIRANDA K. EILDERS IOWA DEPARTMENT OF TRANSPORTATION 428 43rd ST. SW MASON CITY, IA 50401 641-423-7604

UNITED STATES PUBLIC LAND SURVEY CORNER CERTIFICATE

OF

Land Survey Monuments situated in Section 1B, Township 94N, Range 12W
 of the Fifth Principal Meridian, CHICKASAW County, Iowa.

Previously recorded in INST. #2017-2108 in County Recorder's Office.
(book, page, document number, etc.)

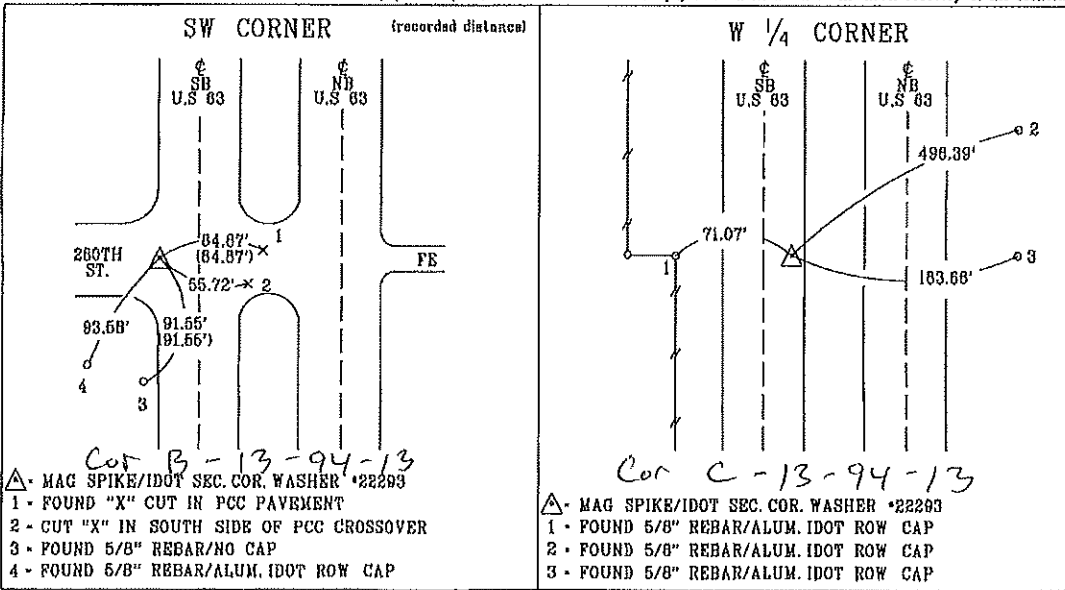
(Show reason for preparing this certificate, the evidence and detailed procedures used in establishing the corner positions and monumentation found or placed.)

Monument Description and Remarks: SW CORNER: REPLACED PREVIOUSLY FOUND SURVEY MARK NAIL/IDOT WASHER WITH MAG SPIKE/IDOT SEC. COR. #22293 11' WEST OF C SOUTH BOUND LANE OF US. 63 PER PREVIOUS CERT OF RECORD INSTRUMENT #2017-2108 AFTER RESURFACING PROJECT MP-063-2(702)-195--76-19.
REASON FOR CERT: MONUMENTATION AND TIES HAVE CHANGED.

W 1/4 CORNER: REPLACED PREVIOUSLY FOUND SURVEY MARK NAIL/IDOT WASHER WITH MAG SPIKE/IDOT SEC. COR. WASHER #22293 10.9' EAST OF C SOUTH BOUND LANE OF US. 63 PER IDOT INFORMATION OF RECORD AFTER RESURFACING PROJECT MP-083-2(702)-195--76-19.
REASON FOR CERT: MONUMENTATION AND TIES HAVE CHANGED.

PLAN - VIEW

(Show a minimum of three reference ties to durable physical objects, relevant monuments and physical conditions that will enable recovery of the corner.)



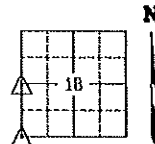
List Corners to be Indexed

Corner	Section	Township	Range
SW CORNER	1B	94N	12W
W 1/4 CORNER	10	94N	12W



I hereby certify that this land surveying document was prepared and the related survey work was performed by me or under my personal supervision and that I am duly licensed professional Land Surveyor under the laws of the state of Iowa.

Miranda K. Eilders 1-15-2020
 Miranda K. Eilders Date
 License number 22293
 My license renewal date is December 31, 2021
 Pages or sheets covered by this appt. 1



Instrument #: 2017-2108
 12/13/2017 02:48:43 PM Total Pages: 1
 SCC SECTION CORNER CERTIFICATES
 Recording Fee: \$ 7.00
 Gindy Messersmith, Recorder, Chickasaw County Iowa

Prepared by & Return to: Herold - Reicks Surveying, 10 East Main Street, New Hampton, IA 50655, Ph. 641-394-2725

United States Public Land Survey Corner Certificate

Land Survey Monument situated in
 Section 19, Township 94 North, Range 12 West of the Fifth Principal Meridian, Chickasaw County, Iowa.
 On file in Book 149, Page 264 in the County Recorder's office.

This certificate is being prepared in compliance with Iowa Code Chapter 355.11 because:

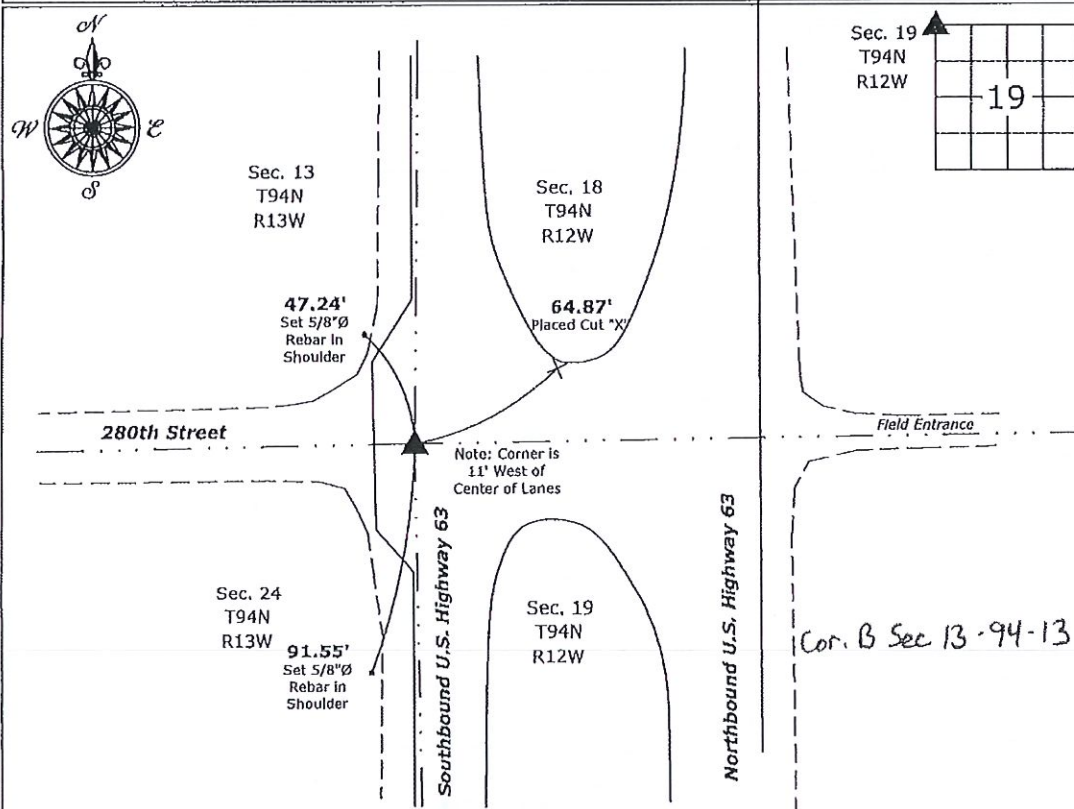
- There is no certificate on file for this corner.
- There are no longer three valid ties of record.
- There are changes to reference ties of record.
- There is change of monumentation of record.
- To clarify description of record monument (ties).

Monument Description and Remarks:

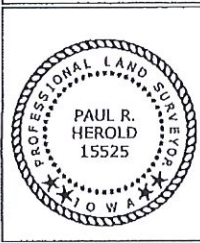
NW Corner: Fd. Survey Mark Nail w/Stainless Steel Washer I.D.O.T. with information obtained from the Iowa Department of Transportation, Corner reset by I.D.O.T. after HMA Overlay, all previous Ties were missing.

Plan View

(Show a minimum of three reference ties to durable physical objects, relevant monuments and physical conditions that will enable recovery of the corner.)



NW Corner of Section 19-94-12
 Fd. Survey Mark Nail w/Stainless Steel Washer I.D.O.T.



I hereby certify that this land surveying document was prepared and the related survey work was performed by me or under my direct personal supervision and that I am a duly licensed Land Surveyor under the laws of the State of Iowa.

Paul R. Herold 12-13-17
 Paul R. Herold Date:
 License number 15525
 My license renewal date is December 31, 2018.
 Sheets covered by this seal: Individual sheet only

List Corner to be Indexed			
Corner	Section	Twp.	Range
NW	19	94	12

Project Number: 2017-100
 FB: Chickasaw County 8, Pgs. 49-50

File: S:_C3D Projects\County Control Systems\CHICKASAW\CHICK-48\CHICK-48.dwg, 12/13/2017 10:11:02 AM

Prepared by & Return to: Herold - Reicks Surveying, 10 East Main Street, New Hampton, IA 50659, Ph. 641-394-2725

United States Public Land Survey Corner Certificate

Land Survey Monument situated in
 Section ¹³18, Township 94 North, Range 13 West of the Fifth Principal Meridian, Chickasaw County, Iowa.
 Not on file in the County Recorder's office.

This certificate is being prepared in compliance with Iowa Code Chapter 355.11 because:

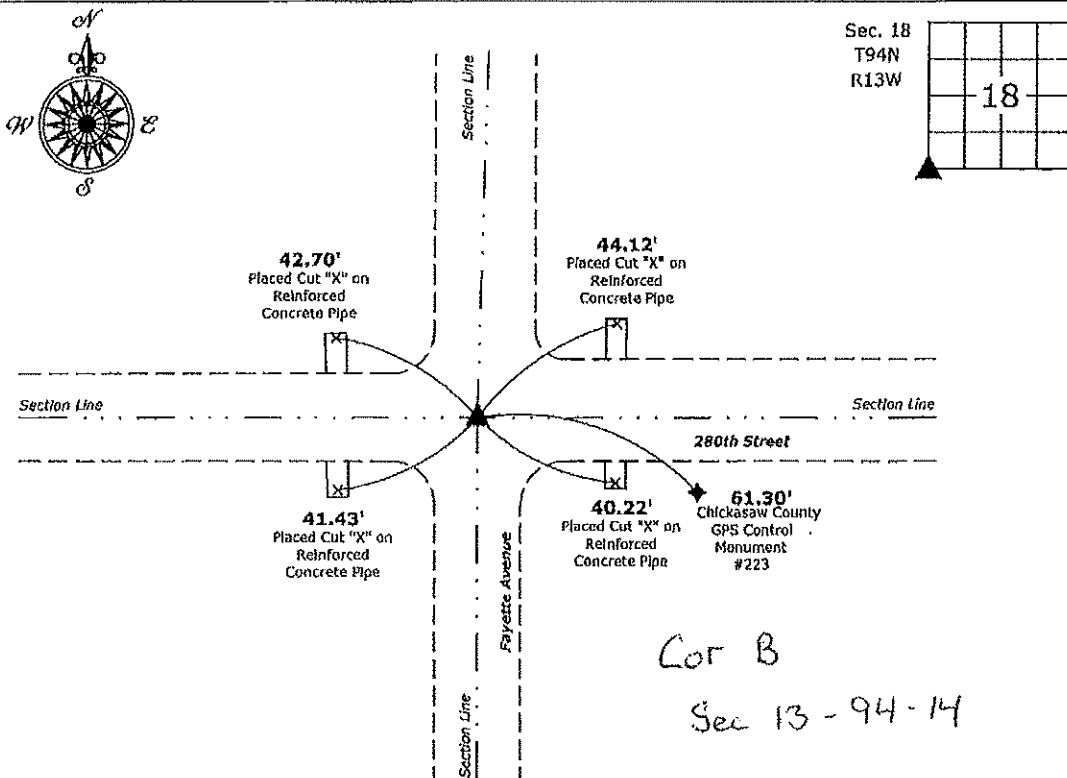
- There is no certificate on file for this corner.
- There are no longer three valid ties of record.
- There are changes to reference ties of record.
- There is change of monumentation of record.
- To clarify description of record monument (ties).

Monument Description and Remarks:

SW Corner: Found 5/8"Ø Rebar 18" Deep, Set 5/8"Ø rebar w/2"Ø Alum. Cap PLS 15525 over in order to perpetuate the monument, Corner recovered with information obtained from the County Engineer's Office in Field Book, Bradford Township, Section 13, Corner "B"

Plan View

(Show a minimum of three reference ties to durable physical objects, relevant monuments and physical conditions that will enable recovery of the corner.)



SW Corner of Section 18-94-13
 Fd. 5/8"Ø Rebar 18" Deep, Set 5/8"Ø rebar w/2"Ø aluminum cap PLS 15525 Over Found Monument



I hereby certify that this land surveying document was prepared and the related survey work was performed by me or under my direct personal supervision and that I am a duly licensed Land Surveyor under the laws of the State of Iowa.

Paul R. Herold 4-24-17
 Date:
 License number 15525
 My license renewal date is December 31, 2018.
 Sheets covered by this seal: Individual sheet only

List Corner to be Indexed			
Corner	Section	Twp.	Range
SW	18	94	13

Project Number: 2017-042
 FB: Chickasaw County 6, Pgs. 41-42

File: S:_CED Projects\County Control Systems\CHICKASAW\CHICK-40\CHICK-40.dwg, 4/24/2017 2:17:26 PM