

Herold - Reicks Surveying, 10 East Main Street, New Hampton, IA 50659, Ph. 641-394-2725, Fax. 641-394-2718

UNITED STATES PUBLIC LAND SURVEY CORNER CERTIFICATE

18

Land Survey Monuments situated in Section 19, Township 94 North, Range 13 West of the Fifth Principal Meridian, Chickasaw County, Iowa. 1.) & 2.) Not previously recorded in the County Recorder's office.

This certificate is being prepared in compliance with Iowa Code Chapter 355.11 because:

- 1.) & 2.) There are no certificates on file for these corners.
 There are no longer three valid ties of record.
 There are changes to reference ties of record.
 There is change of monumentation of record.
 To clarify description of record monument (ties).

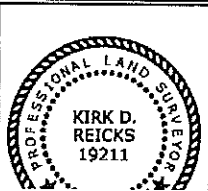
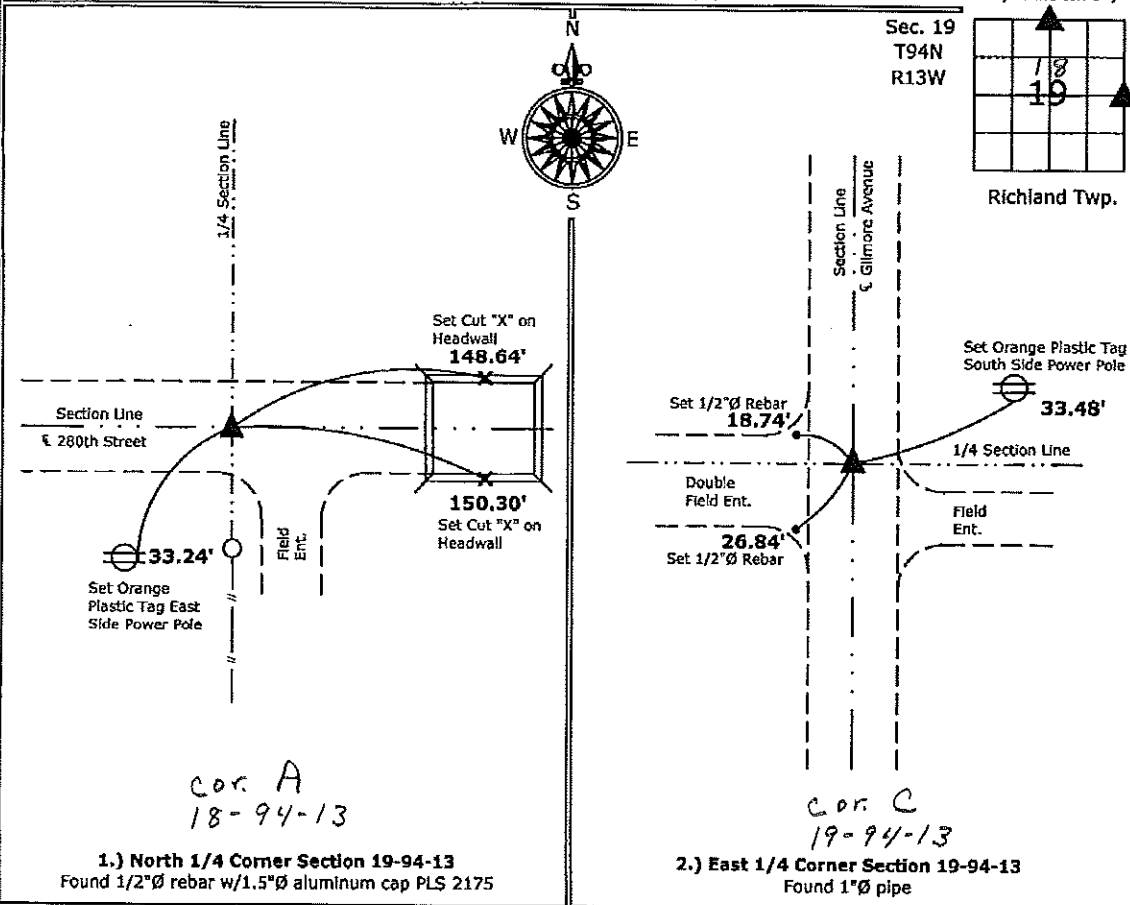
Monument Description and Remarks:

1.) **North 1/4 Corner:** Found 1/2"Ø rebar with 1.5"Ø aluminum cap PLS 2175 with information obtained from the County Engineer's office.

2.) **East 1/4 Corner:** Found 1"Ø pipe with information obtained from a Survey and Plat made by Robert L. Haylock, recorded in Book Deeds 149, Pg. 279, on file in the Chickasaw County Recorder's office, New Hampton, IA.

PLAN - VIEW

(Show a minimum of three reference ties to durable physical objects, relevant monuments and physical conditions that will enable recovery of the corner.)



I hereby certify that this land surveying document was prepared and the related survey work was performed by me or under my direct personal supervision and that I am a duly licensed Land Surveyor under the laws of the State of Iowa.

Kirk D. Reicks 10-5-10
 Kirk D. Reicks Date:

List Corners to be Indexed			
Corners	Section	Twp.	Range
N 1/4	19	94	13
E 1/4	19	94	13

Projects\2010\2010-132.dwg, 10/5/2010 5:40:23 PM

2007-2076
10/24/2007

TeKIPPE ENGINEERING, P.C., 128 South Vine Street, West Union, Iowa 52175 Phone (319) 422-5131

UNITED STATES PUBLIC LAND SURVEY CORNER CERTIFICATE

OF

Land Survey Monuments situated in Section 14, Township 94 North, Range 13 West of the Fifth Principal Meridian, CHICKASAW County, Iowa.

Previously recorded in none in County Recorder's Office.
(book, page, document number, etc.)

(Show reason for preparing this certificate, the evidence and detailed procedures used in establishing the corner positions and monumentation found or placed.)

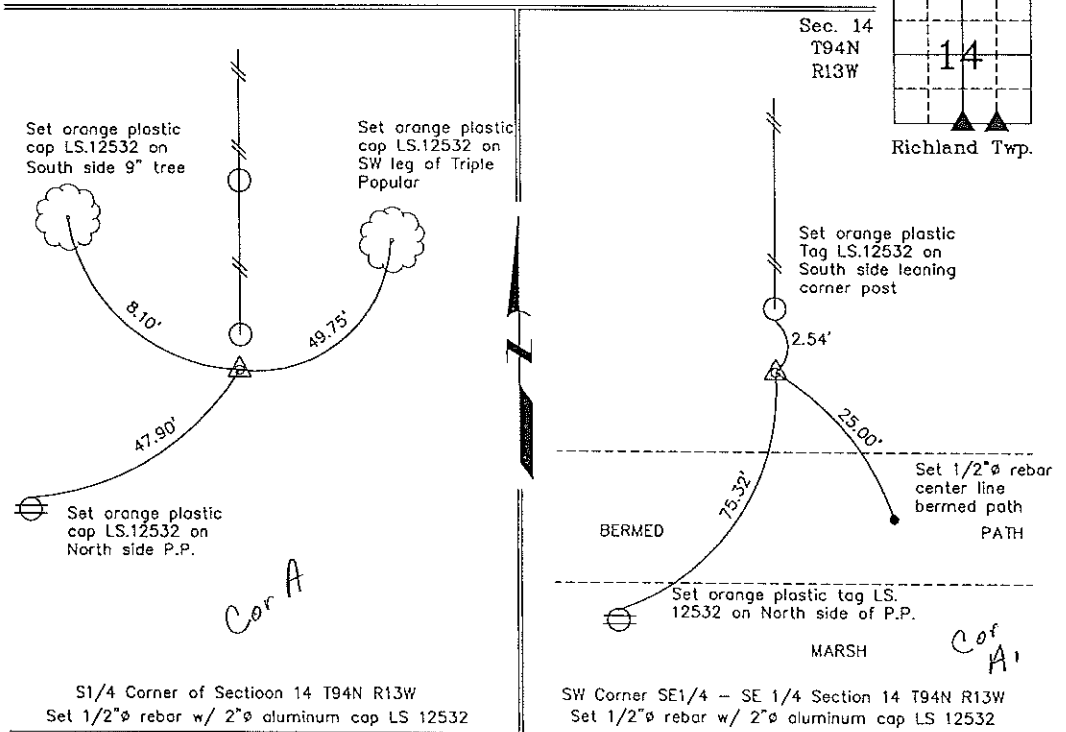
Monument Description and Remarks: S 1/4 Corner of Section 14 T94N R13W: Set 1/2"Ø rebar w/ 2"Ø aluminum cap LS 12532 @ existing corner post.

SW Corner SE 1/4 - SE 1/4 Section 14 T94N R13W: Set 1/2"Ø rebar w/2"Ø aluminum cap L.S. 12532 equidistance and on line between the S 1/4 Corner and the SE Corner

PLAN - VIEW

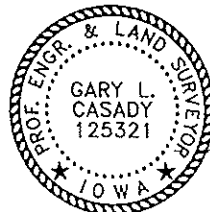
Project Number 0716A.LS
FB 48M PG. 42-48

(Show a minimum of three reference ties to durable physical objects, relevant monuments and physical conditions that will enable recovery of the corner.)



S1/4 Corner of Section 14 T94N R13W
Set 1/2"Ø rebar w/ 2"Ø aluminum cap LS 12532

SW Corner SE1/4 - SE 1/4 Section 14 T94N R13W
Set 1/2"Ø rebar w/ 2"Ø aluminum cap LS 12532



I hereby certify that this land surveying document was prepared and the related survey work was performed by me or under my direct personal supervision and that I am a duly licensed Land Surveyor under the laws of the State of Iowa.
Gary L. Casady 10-23-07
Date
License Number 12532
My license renewal date is December 31, 2008.
Sheets covered by this seal: Individual

List Corners to be Indexed

Corners	Section	Twp.	Range
S 1/4	14	94N	13W
SW-SE-SE	14	94N	13W

X:\Section Corners\Sec. 14\14-94-13wx.dwg