

2007-0224

Herold - Reicks Surveying, 25 1/2 East Main Street, Suite 204, New Hampton, IA 50659, Ph. 641-394-2725

UNITED STATES PUBLIC LAND SURVEY CORNER CERTIFICATE

Land Survey Monuments situated in Section 1, Township 94 North, Range 13 West of the Fifth Principal Meridian, Chickasaw County, Iowa.
 Previously recorded in (1) Bk. 150, Pg. 109 (2) N/A in County Recorder's Office.
(book, page, document number, etc.)

(Show reason for preparing this certificate, the evidence and detailed procedures used in establishing the corner positions and monumentation found or placed.)

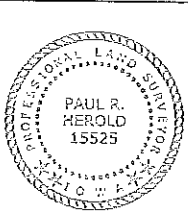
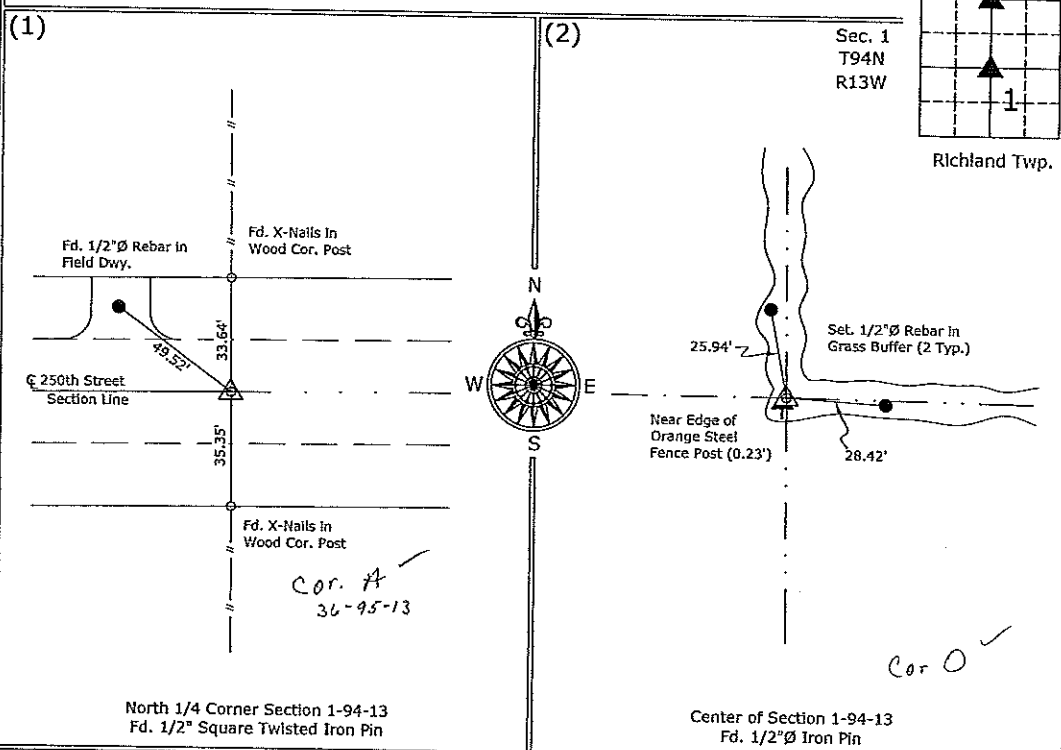
Monument Description and Remarks:

North 1/4 Corner - Found 1/2" square twisted iron pin from previous corner ties. Previous certificate called monument as 1/2"Ø rebar.

Center - Found 1/2"Ø iron pin next to lone orange steel fence post at corner of field division lines. Matches field evidence reported by IDOT field crews. Information on file at IDOT, Mason City, Iowa.

PLAN - VIEW

(Show a minimum of three reference ties to durable physical objects, relevant monuments and physical conditions that will enable recovery of the corner.)



I hereby certify that this land surveying document was prepared and the related survey work was performed by me or under my direct personal supervision and that I am a duly licensed Land Surveyor under the laws of the State of Iowa.
Paul R. Herold 1-30-07
 Paul R. Herold Date:
 License number 15525
 My license renewal date is December 31, 2008.
 Sheets covered by this seal: Sheet P1

List Corners to be Indexed			
Corners	Section	Twp.	Range
N 1/4	1	94	13
Center	1	94	13

S:\Projects\2007\2007-002\dwg\2007-002.dwg
 Project Number: 2007-002
 FB: Chickasaw County 1, Pg. 1

ENG. COPY