

2007-0223

Herold - Reicks Surveying, 25 1/2 East Main Street, Suite 204, New Hampton, IA 50659, Ph. 641-394-2125

UNITED STATES PUBLIC LAND SURVEY CORNER CERTIFICATE

Land Survey Monuments situated in Section 1, Township 94 North, Range 13 West of the Fifth Principal Meridian, Chickasaw County, Iowa. Previously recorded in (1) Bk. 2000, Pg. 1170 (2) BK. 150, Pg. 114 in County Recorder's Office.
(book, page, document number, etc.)

(Show reason for preparing this certificate, the evidence and detailed procedures used in establishing the corner positions and monumentation found or placed.)

Monument Description and Remarks:

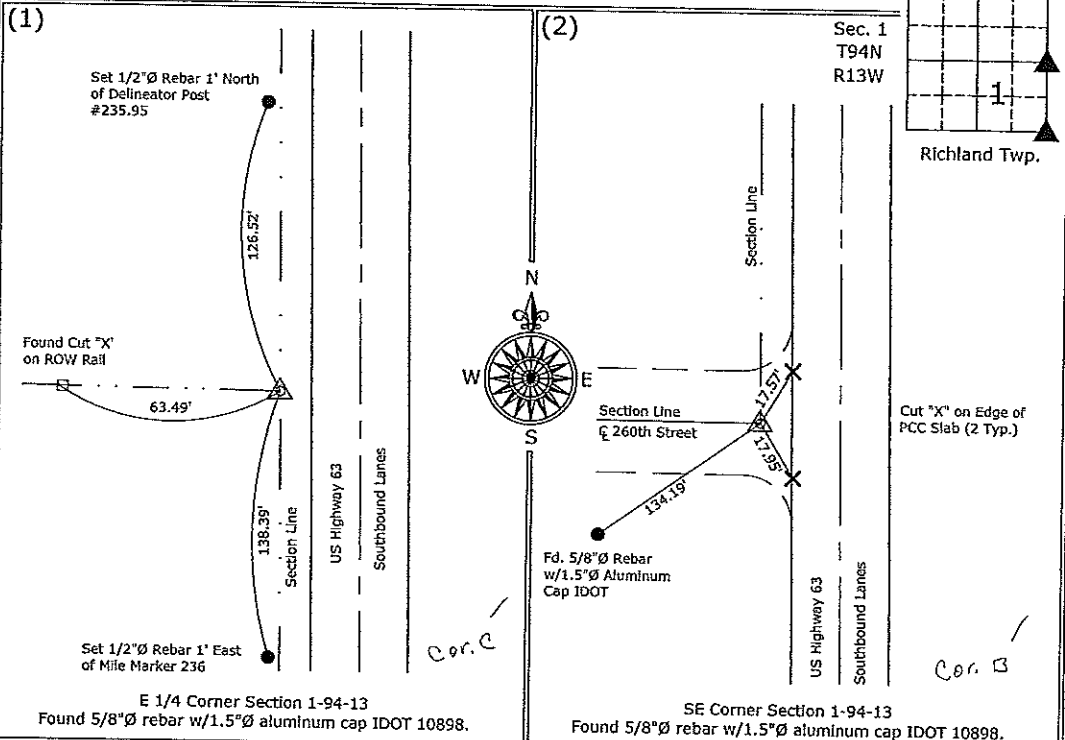
East 1/4 Corner - Found 5/8"Ø rebar w/1.5"Ø aluminum cap IDOT 10898.

SE Corner - Found 5/8"Ø rebar w/1.5"Ø aluminum cap IDOT 10898.

Note: Both corners were re-monumented by the IDOT as a result of the relocation of US Highway 63.

PLAN - VIEW

(Show a minimum of three reference ties to durable physical objects, relevant monuments and physical conditions that will enable recovery of the corner.)



I hereby certify that this land surveying document was prepared and the related survey work was performed by me or under my direct personal supervision and that I am a duly licensed Land Surveyor under the laws of the State of Iowa.

Paul R. Herold 1-30-07
 Paul R. Herold Date:
 License number 15525
 My license renewal date is December 31, 2008.
 Sheets covered by this seal: Sheet P1

List Corners to be Indexed			
Corners	Section	Twp.	Range
E 1/4	1	94	13
SE	1	94	13

S:\Projects\2007\2007-002\dwg\2007-002.dwg
 Project Number: 2007-002
 FB: Chickasaw County 1, Pg. 1

ENC COPY

UNITED STATES PUBLIC LAND SURVEY CORNER CERTIFICATE

OF

Land Survey Monuments situated in Section 1, Township 94 North, Range 13 West of the Fifth Principal Meridian, CHICKASAW County, Iowa. Previously recorded in (1) none, (2) Book 150, Page 111 in County Recorder's Office. (book, page, document number, etc.)

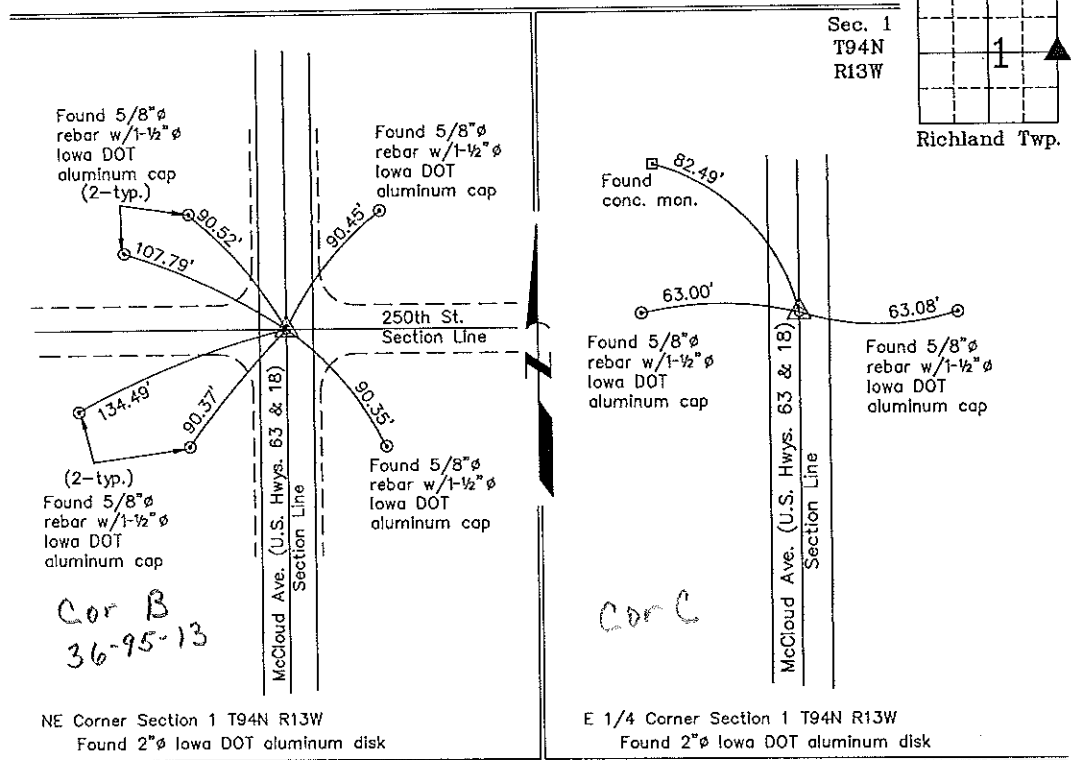
(Show reason for preparing this certificate, the evidence and detailed procedures used in establishing the corner positions and monumentation found or placed.)

Monument Description and Remarks: (1) NE Corner Section 1 T94N R13W: Found Iowa DOT 2"Ø aluminum cap at intersection of centerline of U.S. Hwys. 63 & 18 (McCloud Ave.) and the centerline of County Road 250th St.
 (2) E 1/4 Corner Section 1 T94N R13W: Found Iowa DOT 2"Ø aluminum cap with information obtained from a Section Corner Certificate filed in the Chickasaw County Recorder's Office in Book 150, Page 111, on August 7, 1992. Fence indicated in the Certificate was removed so one tie was missing. An additional tie was found.

PLAN - VIEW

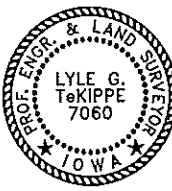
(Show a minimum of three reference ties to durable physical objects, relevant monuments and physical conditions that will enable recovery of the corner.)

Project Number 00120.LS
 FB. 46G PG. 68-69 Day 1



NE Corner Section 1 T94N R13W
 Found 2"Ø Iowa DOT aluminum disk

E 1/4 Corner Section 1 T94N R13W
 Found 2"Ø Iowa DOT aluminum disk



I hereby certify that this land surveying document was prepared and the related survey work was performed by me or under my direct personal supervision and that I am a duly licensed Land Surveyor under the laws of the State of Iowa.
 Lyle G. TeKippe Date 7-7-00
 License number 7060
 My license renewal date is December 31, 2000.
 Sheets covered by this seal: Individual

List Corners to be Indexed			
Corners	Section	Twp.	Range
NE	1	94N	13W
E 1/4	1	94N	13W

Entered 7-10-00

UNITED STATES PUBLIC LAND SURVEY CORNER CERTIFICATE

OF

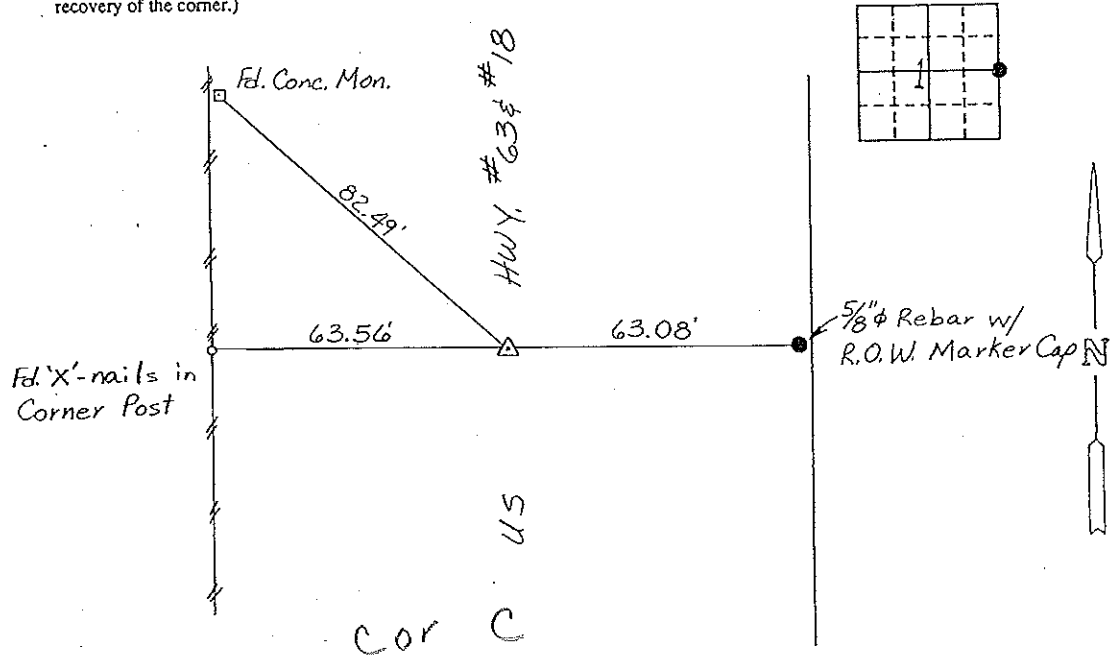
Land Survey Monuments situated in Section 1, Township 94N, Range 13W, of the Fifth Principal Meridian, CHICKASAW County, Iowa. Previously recorded in (NONE) in County Recorder's Office.

(Show reason for preparing this certificate, the evidence and detailed procedures used in establishing the corner positions and monumentation found or placed.)

Monument Description and Remarks: E 1/4 CORNER, SECTION 1-T94N-R13W:
FOUND IDOT MARKER WITH ALUMINUM CAP

PLAN - VIEW

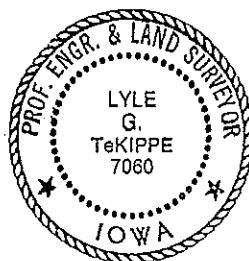
(Show a minimum of three reference ties to durable physical objects, relevant monuments and physical conditions that will enable recovery of the corner.)



E 1/4 CORNER, SECTION 1-T94N-R13W

I hereby certify that the survey work was completed and this certificate was prepared by me or under my direct personal supervision and that I am a duly registered land surveyor under the laws of the state of Iowa.

Signature: Lyle G. TeKippe
Name typed or printed: Lyle G. TeKippe
Date: 8-3-92 Reg. No. 7060



SEAL

Corners	List Corners to be Indexed		
	Section	Twp	Range
E 1/4	1	94N	13W

Placed in Tie Book 8/92