

UNITED STATES PUBLIC LAND SURVEY CORNER CERTIFICATE

OF

Land Survey Monuments situated in Section 1, Township 94 North, Range 13 West of the Fifth Principal Meridian, CHICKASAW County, Iowa. Previously recorded in (1) none, (2) Book 150, Page 111 in County Recorder's Office. (book, page, document number, etc.)

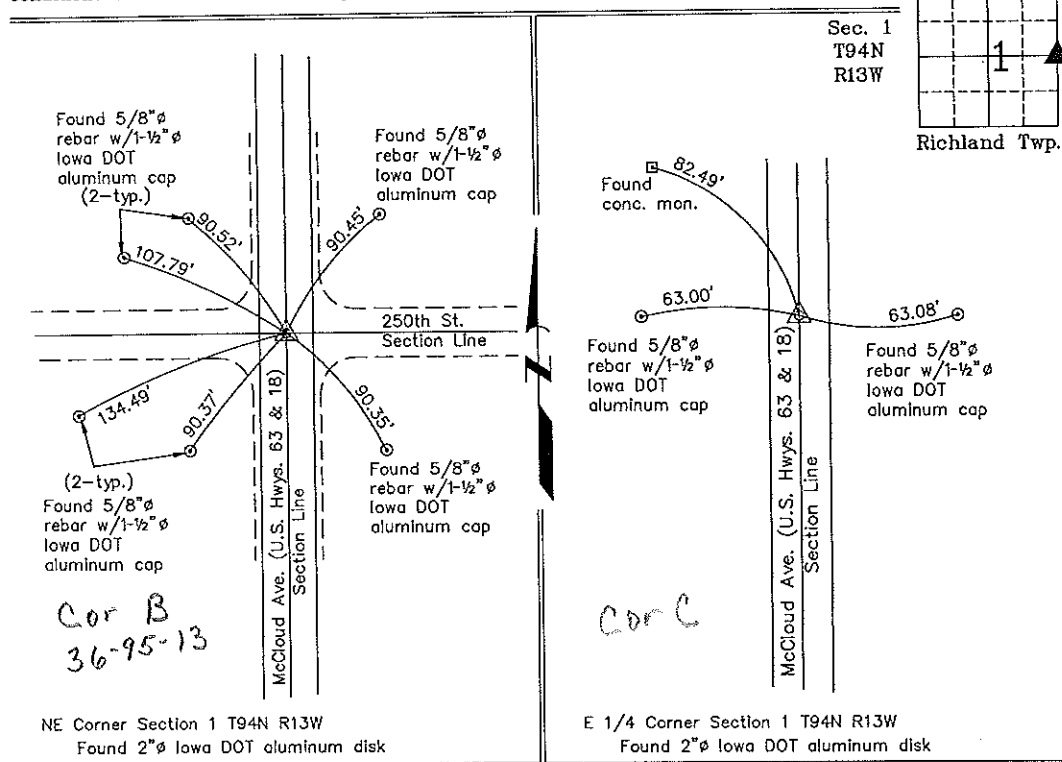
(Show reason for preparing this certificate, the evidence and detailed procedures used in establishing the corner positions and monumentation found or placed.)

Monument Description and Remarks: (1) NE Corner Section 1 T94N R13W: Found Iowa DOT 2"φ aluminum cap at intersection of centerline of U.S. Hwys. 63 & 18 (McCloud Ave.) and the centerline of County Road 250th St. (2) E 1/4 Corner Section 1 T94N R13W: Found Iowa DOT 2"φ aluminum cap with information obtained from a Section Corner Certificate filed in the Chickasaw County Recorder's Office in Book 150, Page 111, on August 7, 1992. Fence indicated in the Certificate was removed so one tie was missing. An additional tie was found.

PLAN - VIEW

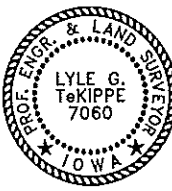
(Show a minimum of three reference ties to durable physical objects, relevant monuments and physical conditions that will enable recovery of the corner.)

Project Number 00120.LS  
 FR. 46G PG. 68-69 Day 1  
 B of 31



NE Corner Section 1 T94N R13W  
 Found 2"φ Iowa DOT aluminum disk

E 1/4 Corner Section 1 T94N R13W  
 Found 2"φ Iowa DOT aluminum disk



I hereby certify that this land surveying document was prepared and the related survey work was performed by me or under my direct personal supervision and that I am a duly licensed Land Surveyor under the laws of the State of Iowa.

*Lyle G. TeKippe* 7-7-00  
 Lyle G. TeKippe Date  
 License number 7060  
 My license renewal date is December 31, 2000.  
 Sheets covered by this seal: Individual

List Corners to be Indexed			
Corners	Section	Twp.	Range
NE	1	94N	13W
E 1/4	1	94N	13W

Entered 7-10-00