

Section 17-94-13  
 As referred to in  
 Engg Tie Book

SLS19-90

UNITED STATES PUBLIC LAND SURVEY CORNER CERTIFICATE

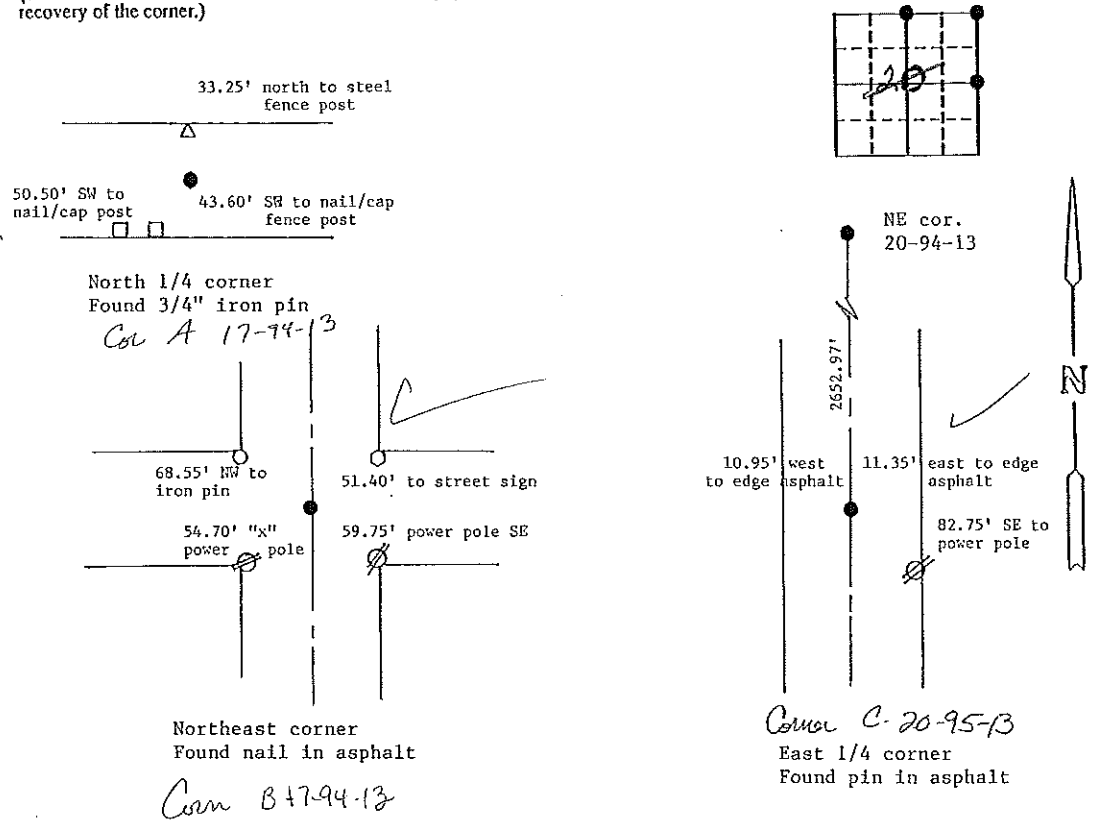
OF 17

Land Survey Monuments situated in Section 20, Township 94 North, Range 13 West, of the Fifth Principal Meridian, Chickasaw County, Iowa. Previously recorded in N/A in County Recorder's Office.

(Show reason for preparing this certificate, the evidence and detailed procedures used in establishing the corner positions and monumentation found or placed.)  
 Monument Description and Remarks: Found corners as shown below. Measured in ties as listed.

PLAN - VIEW

(Show a minimum of three reference ties to durable physical objects, relevant monuments and physical conditions that will enable recovery of the corner.)



I hereby certify that the survey work was completed and this certificate was prepared by me or under my direct personal supervision and that I am a duly registered land surveyor under the laws of the state of Iowa.

Signature: Steve Busse  
 Name typed or printed: STEVE BUSSE

Date: 6/21/93 Reg. No. 9018

MY REGISTRATION IS SUBJECT TO RENEWAL DEC. 31, 1994

SEAL

Corners	Section	Twp	Range
North 1/4 cor.	20	94	13
Northeast cor.	20	94	13
East 1/4 cor.	20	94	13

*Placed in tie book  
6/28/93*