

Prepared by & Return to: *Herold - Reicks Surveying, 10 East Main Street, New Hampton, IA 50659, Ph. 641-394-2725*

UNITED STATES PUBLIC LAND SURVEY CORNER CERTIFICATE

Land Survey Monuments situated in Section ¹⁷ 20, Township 94 North, Range 13 West of the Fifth Principal Meridian, Chickasaw County, Iowa. 1., 2.) Previously recorded in Bk. 152, Pg. 228 in the County Recorder's office.

This certificate is being prepared in compliance with Iowa Code Chapter 355.11 because:

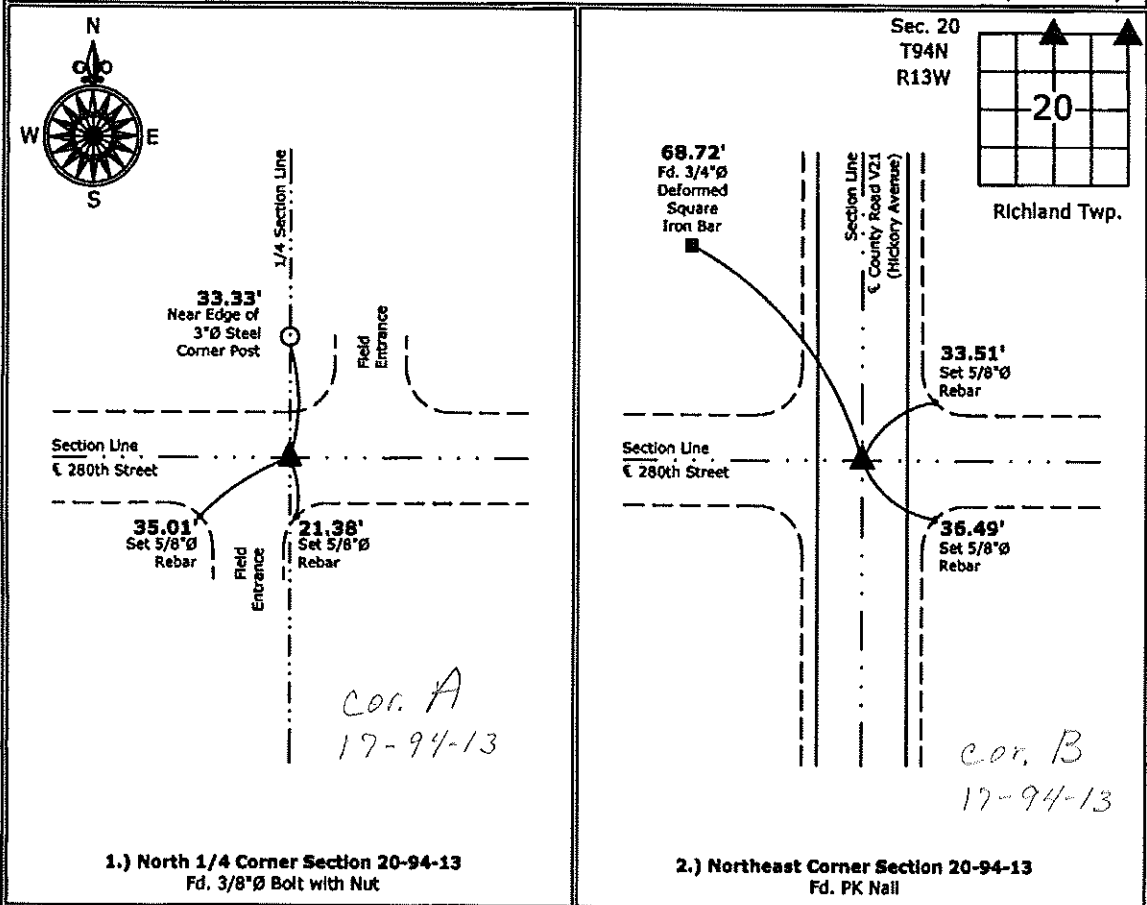
- There is no certificate on file for this corner.
- 1 & 2 There are no longer three valid ties of record.
- 1 & 2 There are changes to reference ties of record.
- 1 There is change of monumentation of record.
- To clarify description of record monument (ties).

Monument Description and Remarks:

- 1.) **North 1/4 Corner:** Fd. 3/8"Ø Bolt with Nut from previous Section Corner Certificate, set two new ties to update the corner.
- 2.) **Northeast Corner:** Fd. PK Nail from previous Section Corner Certificate, set two new ties to update the corner.

PLAN - VIEW

(Show a minimum of three reference ties to durable physical objects, relevant monuments and physical conditions that will enable recovery of the corner.)



I hereby certify that this land surveying document was prepared and the related survey work was performed by me or under my direct personal supervision and that I am a duly licensed Land Surveyor under the laws of the State of Iowa.
Kirk D. Reicks 7-17-12
 Kirk D. Reicks Date:
 License number 19211
 My license renewal date is December 31, 2012.
 Sheets covered by this seal: Individual sheet only

List Corners to be Indexed			
Corners	Section	Twp.	Range
N 1/4	20	94	13
NE	20	94	13

Project Number: 2012-109
 FB: Chickasaw County 4, Pgs. 48, 49

Files: S:_CSD Projects\2012\2012-109\2012-109.dwg, 7/17/2012 11:22:18 AM

Section 17-94-13
 As referred to in
 Engg Tie Book

SLS19-90

UNITED STATES PUBLIC LAND SURVEY CORNER CERTIFICATE

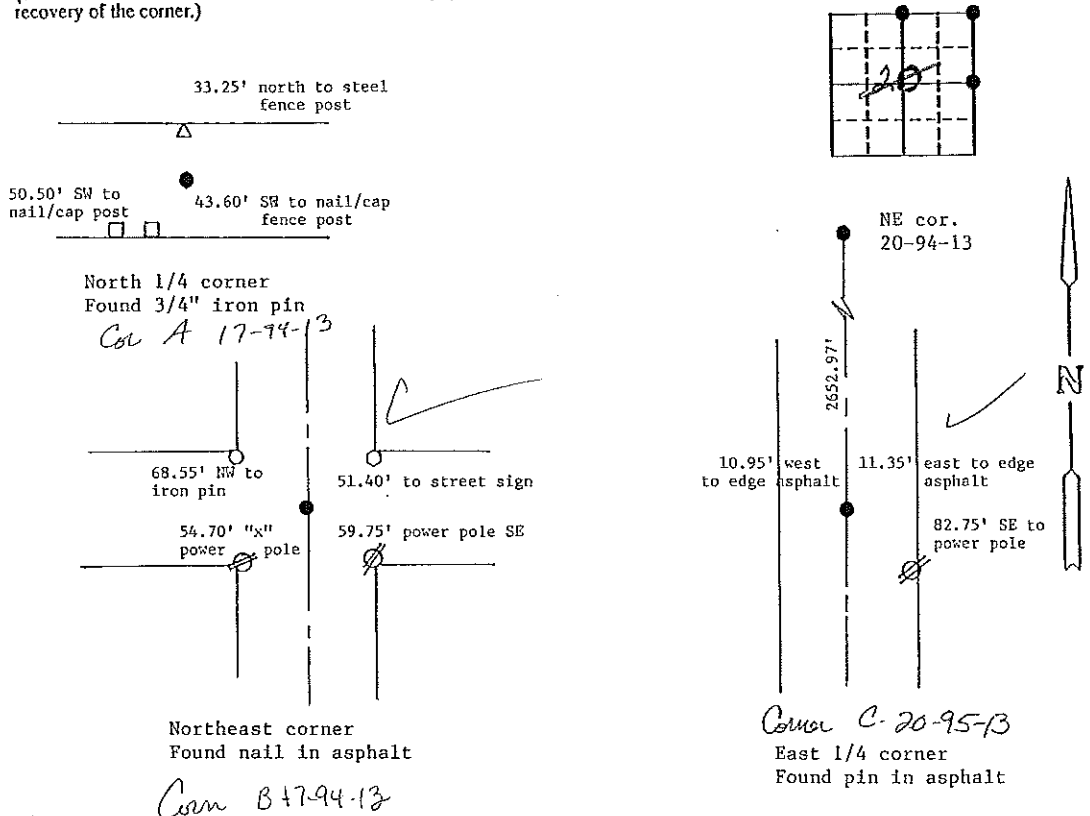
OF 17

Land Survey Monuments situated in Section 20, Township 94 North, Range 13 West, of the Fifth Principal Meridian, Chickasaw County, Iowa. Previously recorded in N/A in County Recorder's Office.

(book, page, document number, etc.)
 (Show reason for preparing this certificate, the evidence and detailed procedures used in establishing the corner positions and monumentation found or placed.)
 Monument Description and Remarks: Found corners as shown below. Measured in ties as listed.

PLAN - VIEW

(Show a minimum of three reference ties to durable physical objects, relevant monuments and physical conditions that will enable recovery of the corner.)



I hereby certify that the survey work was completed and this certificate was prepared by me or under my direct personal supervision and that I am a duly registered land surveyor under the laws of the state of Iowa.

Signature: Steve Busse
 Name typed or printed: STEVE BUSSE

Date: 6/21/93 Reg. No. 9018

MY REGISTRATION IS SUBJECT TO RENEWAL DEC. 31, 1994

SEAL

Corners	Section	Twp	Range
North 1/4 cor.	20	94	13
Northeast cor.	20	94	13
East 1/4 cor.	20	94	13

*Placed in tie book
6/28/93*