

TEKIPPE ENGINEERING, P.C., 128 South Vine Street, West Union, Iowa 52176 Phone (563) 422-5131

UNITED STATES PUBLIC LAND SURVEY CORNER CERTIFICATE

OF 21

Land Survey Monuments situated in Section 22, Township 94 North, Range 13 West of the Fifth Principal Meridian, Chickasaw County, Iowa.
 Previously recorded in (1) none (2) none in County Recorder's Office.
 (book, page, document number, etc.)

(Show reason for preparing this certificate, the evidence and detailed procedures used in establishing the corner positions and monumentation found or placed.)

Monument Description and Remarks: (1) W1/4 Corner of Section 22-T94N-R13W:

Found 3/4" Iron pin with information obtained from County Engineer's office.

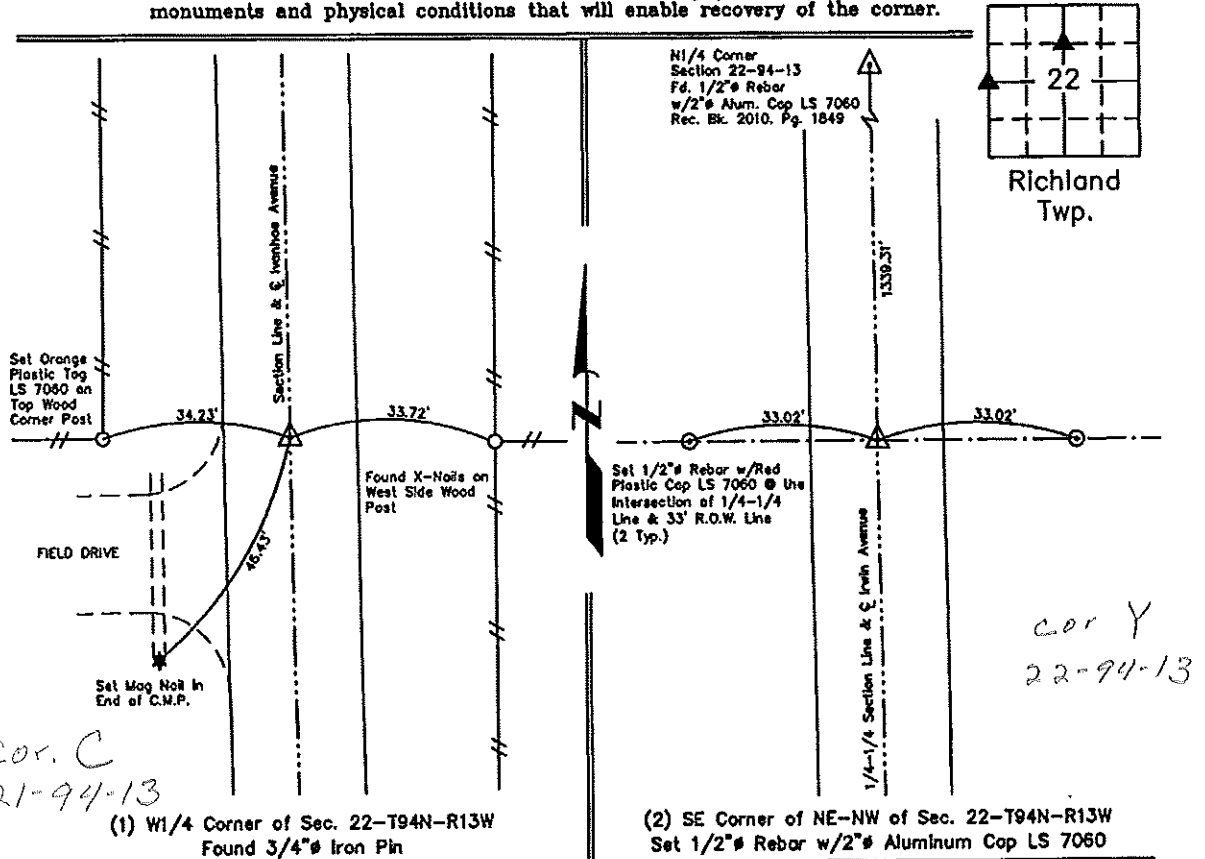
(2) SE Corner of NE-NW of Section 22-T94N-R13W:

Set 1/2" rebar with 2" aluminum cap LS 7060 midway and on-line between the N1/4 Corner and the calculated Center of Section position which was derived from the standard mathematical breakdown of the Section.

PLAN VIEW

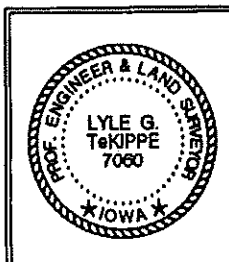
Project Number 121081.LS
 Field Book: 46M, Page 77

Show a minimum of three reference ties to durable physical objects, relevant monuments and physical conditions that will enable recovery of the corner.



(1) W1/4 Corner of Sec. 22-T94N-R13W
 Found 3/4" Iron Pin

(2) SE Corner of NE-NW of Sec. 22-T94N-R13W
 Set 1/2" Rebar w/2" Aluminum Cap LS 7060



I hereby certify that this land surveying document was prepared and the related survey work was performed by me or under my direct personal supervision and that I am a duly licensed Land Surveyor under the laws of the State of Iowa.

Lyle G. Tekippe 5-25-12
 Lyle G. Tekippe, P.E. & P.L.S. Date
 License Number 7060
 My license renewal date is December 31, 2012.
 Sheets covered by this seal: This Sheet Only

List Corners to be Indexed			
Corners	Section	Twp.	Range
W1/4	22	94N	13W
SE of NE-NW	22	94N	13W

X:\Section Corners\Sec. 22\22-94-13KH.dwg