

TeKIPPE ENGINEERING, P.C., 128 South Vine Street, West Union, Iowa 52175 Phone (563) 422-6131

UNITED STATES PUBLIC LAND SURVEY CORNER CERTIFICATE

OF 15

Land Survey Monuments situated in Section 22, Township 94 North, Range 13 West of the Fifth Principal Meridian, Chickasaw County, Iowa.

Previously recorded in (1) none (2) none in County Recorder's Office.
 (book, page, document number, etc.)

(Show reason for preparing this certificate, the evidence and detailed procedures used in establishing the corner positions and monumentation found or placed.)

Monument Description and Remarks: (1) NW Corner of Section 22-T94N-R13W:

Re-established Corner position from Chickasaw County Engineer's ties. Set 1/2" rebar with 2" aluminum cap LS 7060.

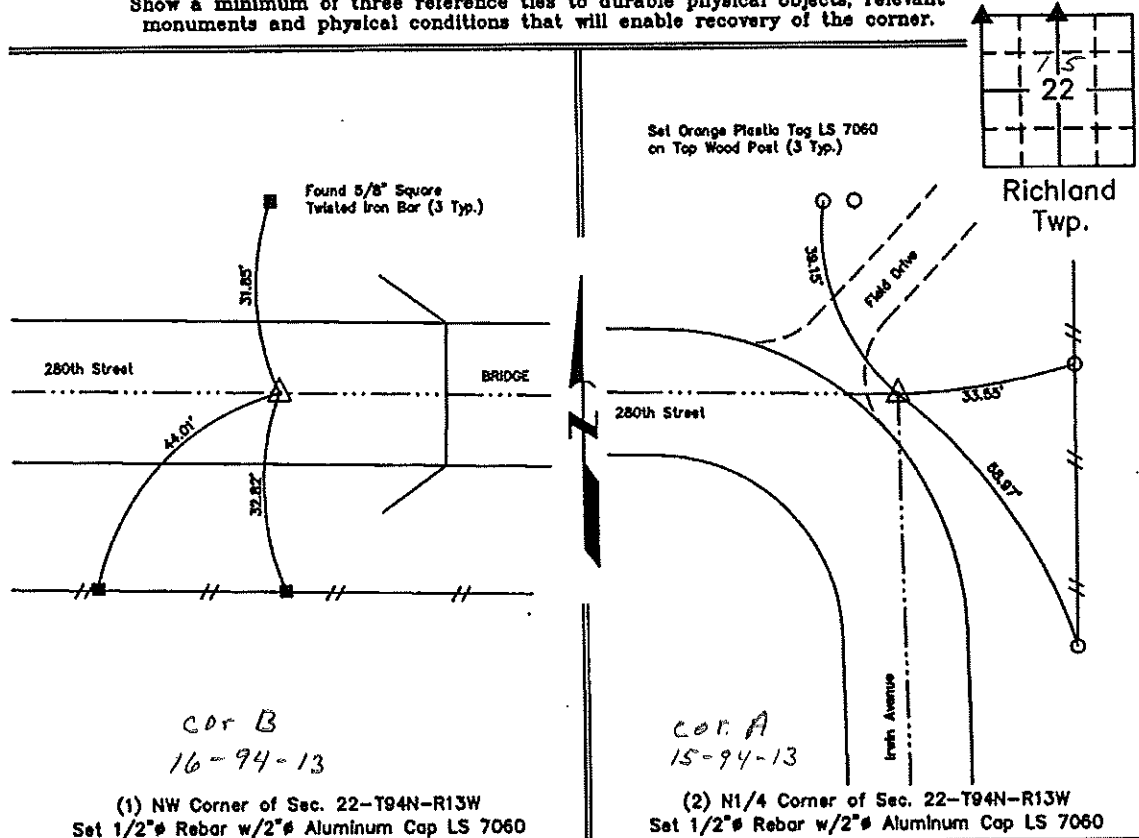
(2) N1/4 Corner of Section 22-T94N-R13W:

Re-established Corner position at the P.I. of 280th Street and Irwin Avenue after comparing to surrounding occupation and Right-of-Way fences. Set 1/2" rebar with 2" aluminum cap LS 7060.

PLAN VIEW

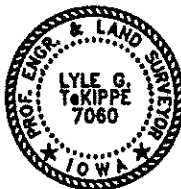
Project Number 101198.LS
 Field Book: 46M, Page 71

Show a minimum of three reference ties to durable physical objects, relevant monuments and physical conditions that will enable recovery of the corner.



(1) NW Corner of Sec. 22-T94N-R13W
 Set 1/2" Rebar w/2" Aluminum Cap LS 7060

(2) N1/4 Corner of Sec. 22-T94N-R13W
 Set 1/2" Rebar w/2" Aluminum Cap LS 7060



I hereby certify that this land surveying document was prepared and the related survey work was performed by me or under my direct personal supervision and that I am a duly licensed Land Surveyor under the laws of the State of Iowa.

Lyle G. TeKippe 11-12-10
 Lyle G. TeKippe Date

License Number 7060
 My license renewal date is December 31, 2010.
 Sheets covered by this seal: Individual

List Corners to be Indexed

Corners	Section	Twp.	Range
NW	22	94N	13W
N1/4	22	94N	13W

X:\Section Corners\Sec. 22\22-94-13AC.dwg