

TeKIPPE ENGINEERING, P.C., 128 South Vine Street, West Union, Iowa 52176 Phone (563) 422-5131

UNITED STATES PUBLIC LAND SURVEY CORNER CERTIFICATE

OF

Land Survey Monuments situated in Section 22, Township 94 North, Range 13 West of the Fifth Principal Meridian, Chickasaw County, Iowa.

Previously recorded in none in County Recorder's Office.
(book, page, document number, etc.)

(Show reason for preparing this certificate, the evidence and detailed procedures used in establishing the corner positions and monumentation found or placed.)

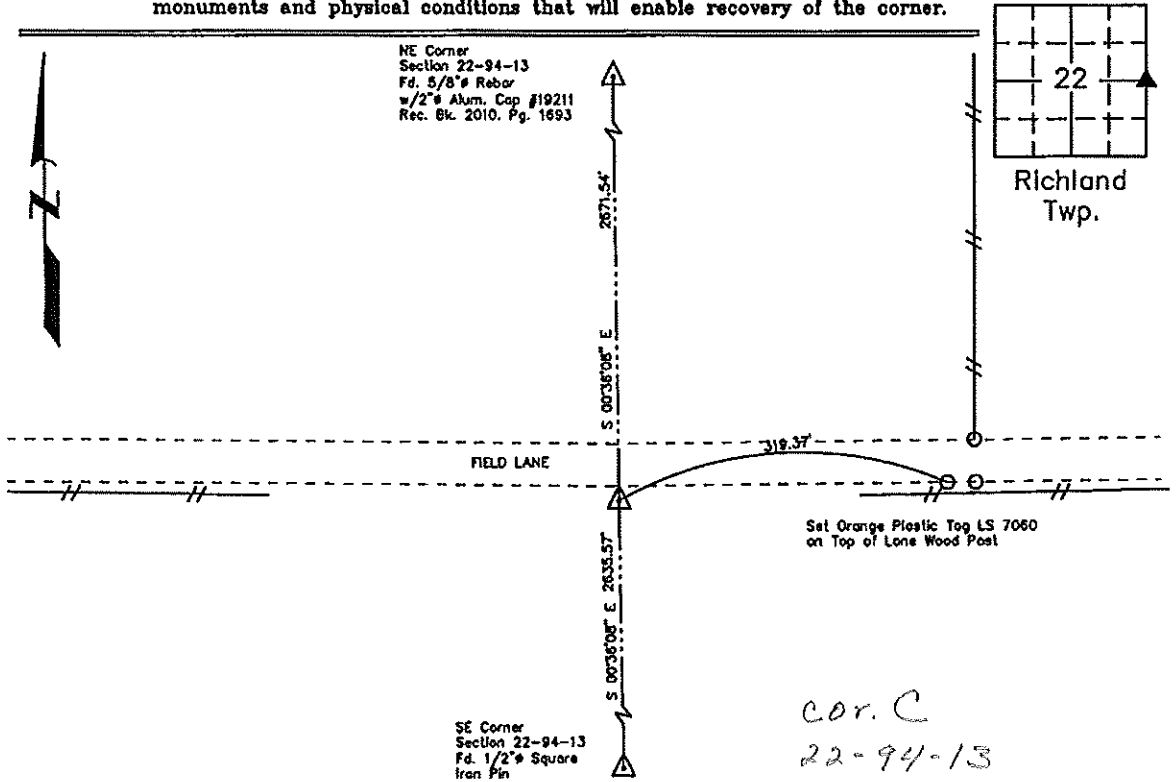
Monument Description and Remarks: E1/4 Corner of Section 22-T94N-R13W:

Found no existing records of this corner or substantial field evidence of the existence of this corner. At the time of the survey the owner on the North side of the fence was clearing out the fence line and the immediate location had been excavated. In speaking with the owners on the North side of the fence and the South side of the fence, neither recalled there ever being a definitive corner post in the vicinity. Set 1/2" rebar with 2" aluminum cap LS 7060 on a line from the SE Corner to the NE Corner at the intersection of the existing East-West Fence as the E1/4 Corner.

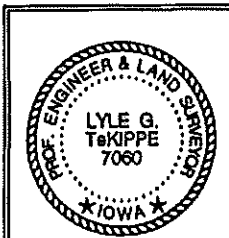
PLAN VIEW

Project Number 121081.LS
Field Book: 46M, Page 77

Show a minimum of three reference ties to durable physical objects, relevant monuments and physical conditions that will enable recovery of the corner.



E1/4 Corner of Sec. 22-T94N-R13W
Set 1/2" Rebar w/2" Aluminum Cap LS 7060



I hereby certify that this land surveying document was prepared and the related survey work was performed by me or under my direct personal supervision and that I am a duly licensed Land Surveyor under the laws of the State of Iowa.
Lyle G. TeKippe 5-25-12
Lyle G. TeKippe, P.E. & P.L.S. Date
License Number 7060
My license renewal date is December 31, 2012.
Sheets covered by this seal: This Sheet Only

List Corners to be Indexed			
Corners	Section	Twp.	Range
E1/4	22	94N	13W

X:\Section Corners\Sec. 22\22-94-130.dwg