

*Herold - Reicks Surveying, 10 East Main Street, New Hampton, IA 50659, Ph. 641-394-2725, Fax. 641-394-2718*

**UNITED STATES PUBLIC LAND SURVEY CORNER CERTIFICATE**

15"

Land Survey Monuments situated in Section 14, Township 94 North, Range 13 West of the Fifth Principal Meridian, Chickasaw County, Iowa. Not previously recorded in the County Recorder's office.

This certificate is being prepared in compliance with Iowa Code Chapter 355.11 because: {

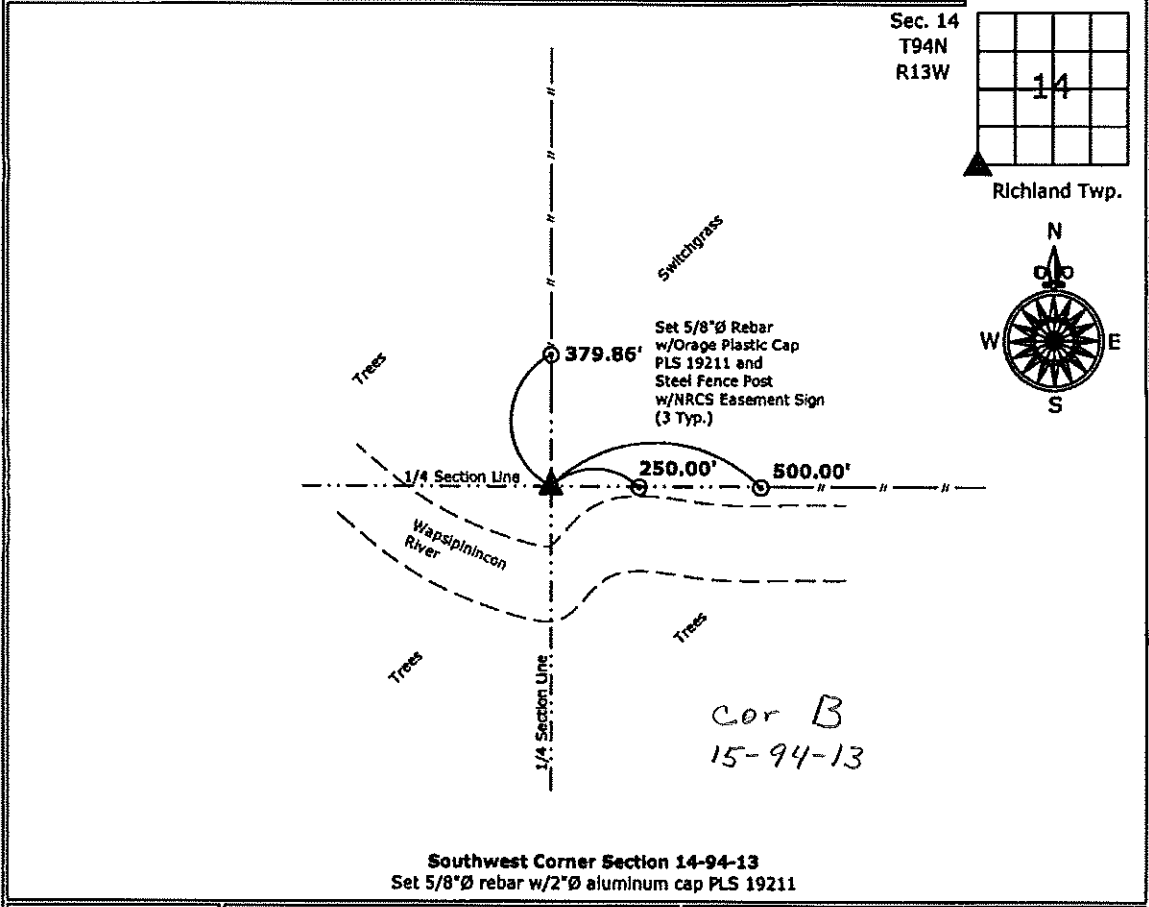
- There is no certificate on file for this corner.
- There are no longer three valid ties of record.
- There are changes to reference ties of record.
- There is change of monumentation of record.
- To clarify description of record monument (ties).

Monument Description and Remarks:

**Southwest Corner:** Set 5/8"Ø rebar with 2"Ø aluminum cap PLS 19211 at the intersection of possession line fences.

**PLAN - VIEW**

(Show a minimum of three reference ties to durable physical objects, relevant monuments and physical conditions that will enable recovery of the corner.)



**Southwest Corner Section 14-94-13**  
 Set 5/8"Ø rebar w/2"Ø aluminum cap PLS 19211



I hereby certify that this land surveying document was prepared and the related survey work was performed by me or under my direct personal supervision and that I am a duly licensed Land Surveyor under the laws of the State of Iowa.

*Kirk D. Reicks* 10-26-10  
 Kirk D. Reicks Date:  
 License number 19211  
 My license renewal date is December 31, 2010.  
 Sheets covered by this seal: Individual sheet only

List Corners to be Indexed			
Corners	Section	Twp.	Range
SW	14	94	13
Project Number: 2010-130			
FB: Chickasaw County 2, Pgs. 46			