

Section 23-94-13  
 As referred to in  
 Engr. Tr. Book

2007-2071  
 10/24/2007

TeKIPPE ENGINEERING, P.C., 128 South Vine Street, West Union, Iowa 52175 Phone (319) 422-5131

UNITED STATES PUBLIC LAND SURVEY CORNER CERTIFICATE

OF 23  
 Land Survey Monuments situated in Section 24, Township 94 North, Range 13 West of the Fifth Principal Meridian, Chickasaw County, Iowa.  
 Previously recorded in W 1/4 Cor--Bk. 149, p. 268; Center--Bk. 149, p. 269 in County Recorder's Office.  
 (book, page, document number, etc.)

(Show reason for preparing this certificate, the evidence and detailed procedures used in establishing the corner positions and monumentation found or placed.)

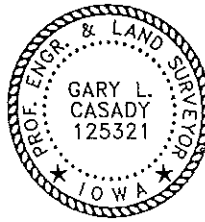
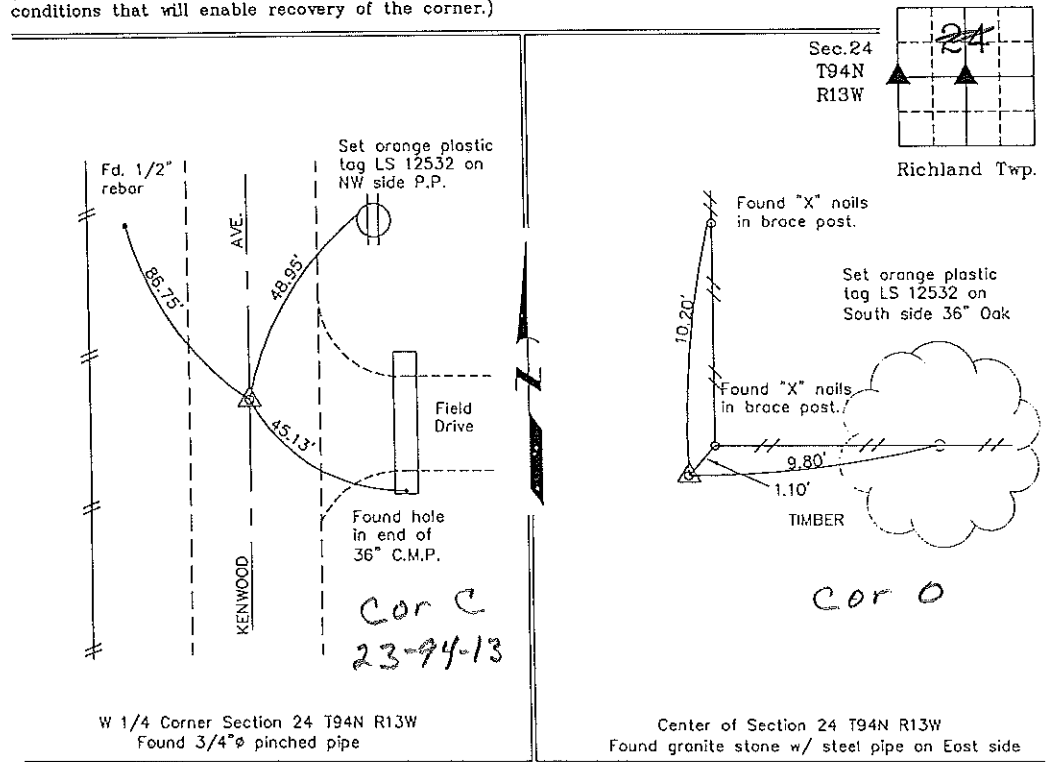
Monument Description and Remarks: W 1/4 Section 24 T94N R13W: Found 3/4"Ø Pinched Pipe. Updated certificate with new reference ties.

Center Section 24 T94N R13W: Fd. granite stone w/ steel pipe on east side. Updated certificate with new reference ties.

PLAN - VIEW

Project Number 07169 LS  
 FB 48M PD. 42-15

(Show a minimum of three reference ties to durable physical objects, relevant monuments and physical conditions that will enable recovery of the corner.)



I hereby certify that this land surveying document was prepared and the related survey work was performed by me or under my direct personal supervision and that I am a duly licensed Land Surveyor under the laws of the State of Iowa.  
 Gary L. Casady Date 10-23-07  
 License Number 12532  
 My license renewal date is December 31, 2008.  
 Sheets covered by this set: Individual

List Corners to be Indexed			
Corners	Section	Twp.	Range
W 1/4	24	94N	13W
Center	24	94N	13W

X:\Section Corners\Sec. 24\24-94-13km.dwg