

2007-2076
10/24/2007

TeKIPPE ENGINEERING, P.C., 128 South Vine Street, West Union, Iowa 52175 Phone (319) 422-5131

UNITED STATES PUBLIC LAND SURVEY CORNER CERTIFICATE

OF

Land Survey Monuments situated in Section 14, Township 94 North, Range 13 West of the Fifth Principal Meridian, CHICKASAW County, Iowa.

Previously recorded in none in County Recorder's Office.
(book, page, document number, etc.)

(Show reason for preparing this certificate, the evidence and detailed procedures used in establishing the corner positions and monumentation found or placed.)

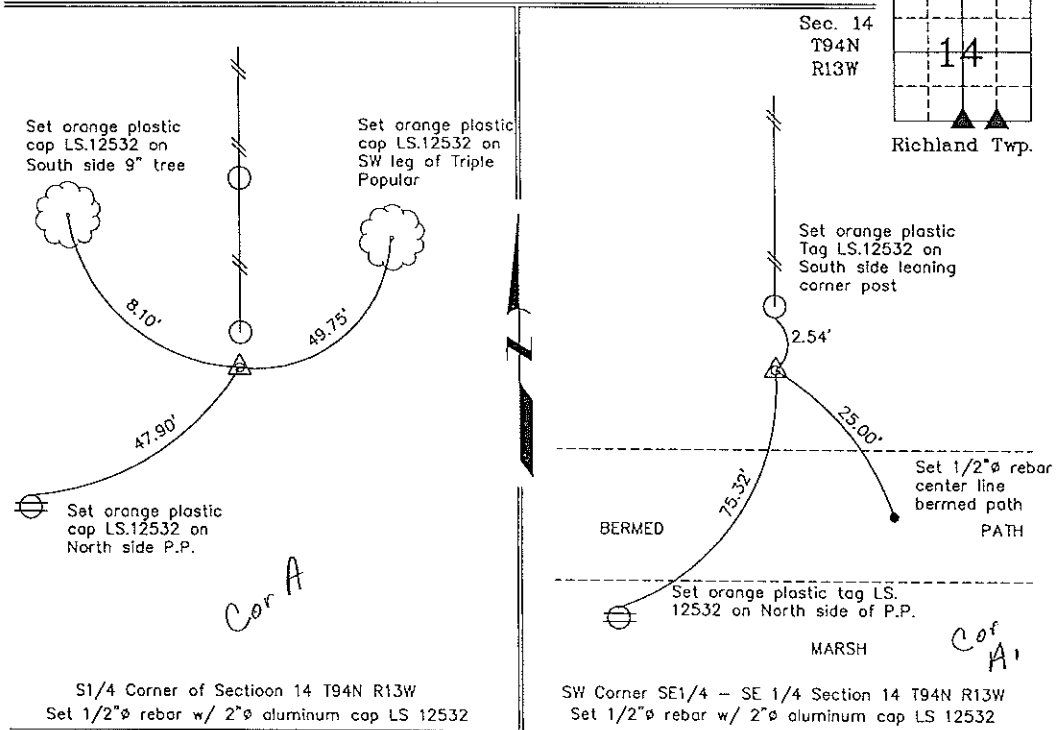
Monument Description and Remarks: S 1/4 Corner of Section 14 T94N R13W: Set 1/2"Ø rebar w/ 2"Ø aluminum cap LS 12532 @ existing corner post.

SW Corner SE 1/4 - SE 1/4 Section 14 T94N R13W: Set 1/2"Ø rebar w/2"Ø aluminum cap L.S. 12532 equidistance and on line between the S 1/4 Corner and the SE Corner

PLAN - VIEW

Project Number 0716A.LS
FB 48X PG. 42-48

(Show a minimum of three reference ties to durable physical objects, relevant monuments and physical conditions that will enable recovery of the corner.)



I hereby certify that this land surveying document was prepared and the related survey work was performed by me or under my direct personal supervision and that I am a duly licensed Land Surveyor under the laws of the State of Iowa.

Gary L. Casady 10-23-07
Date
Gary L. Casady
License Number 12532
My license renewal date is December 31, 2008.
Sheets covered by this seal: Individual

List Corners to be Indexed			
Corners	Section	Twp.	Range
S 1/4	14	94N	13W
SW-SE-SE	14	94N	13W

X:\Section Corners\Sec. 14\14-94-13wx.dwg