

2007-2073
10/24/2007

Section 14-94-13
As referred to in
Engr. Tie Book

TeKIPPE ENGINEERING, P.C., 128 South Vine Street, West Union, Iowa 52176 Phone (319) 422-5131
UNITED STATES PUBLIC LAND SURVEY CORNER CERTIFICATE

OF 14
Land Survey Monuments situated in Section 24, Township 94 North, Range 13 West of the Fifth Principal Meridian, Chickasaw County, Iowa.
Previously recorded in NW Cor Bk 149, Pg 262; NW-SW-NW none in County Recorder's Office.
(book, page, document number, etc.)

(Show reason for preparing this certificate, the evidence and detailed procedures used in establishing the corner positions and monumentation found or placed.)

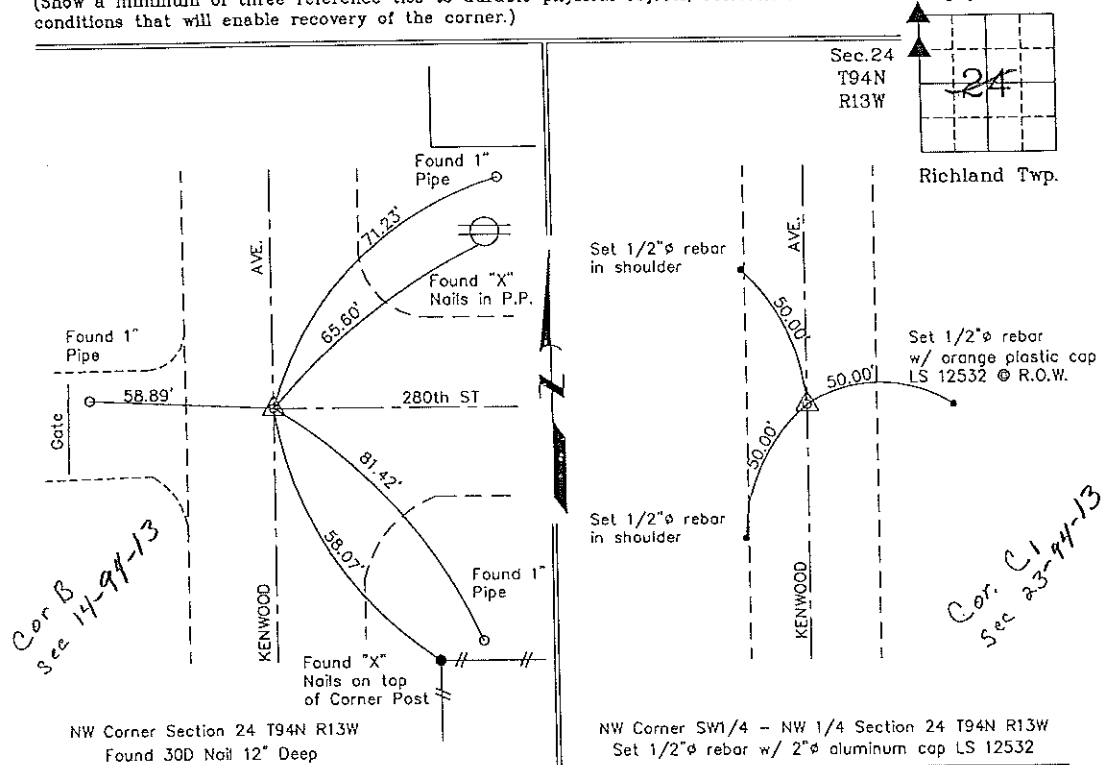
Monument Description and Remarks: NW Corner Section 24 T94N R13W: Found 30D Nail 12" deep from Certificate recorded in Deed Book 149 Page 262. Updated existing ties.

NW Corner SW 1/4 - NW 1/4 Section 24 T94N R13W: Set 1/2" ϕ Rebar w/ 2" ϕ aluminum cap LS 12532 Mid-way, online between the NW Corner and the W 1/4 Corner

PLAN - VIEW

(Show a minimum of three reference ties to durable physical objects, relevant monuments and physical conditions that will enable recovery of the corner.)

Project Number 07165.LS
FB 46M PG 42-49

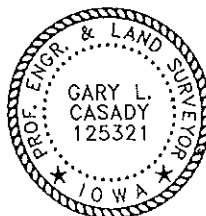


Cor B
Sec 14-94-13

Cor. C1
Sec 23-94-13

NW Corner Section 24 T94N R13W
Found 30D Nail 12" Deep

NW Corner SW1/4 - NW 1/4 Section 24 T94N R13W
Set 1/2" ϕ rebar w/ 2" ϕ aluminum cap LS 12532



I hereby certify that this land surveying document was prepared and the related survey work was performed by me or under my direct personal supervision and that I am a duly licensed Land Surveyor under the laws of the State of Iowa.
Date: 10-23-07
License number 12532
My license renewal date is December 31, 2008
Sheets covered by this seal: Individual

List Corners to be Indexed			
Corners	Section	Twp.	Range
NW	24	94N	13W
NW-SW-NW	24	94N	13W

X:\Section Corners\Sec. 24\24-94-13af.dwg