

UNITED STATES PUBLIC LAND SURVEY CORNER CERTIFICATE

OF

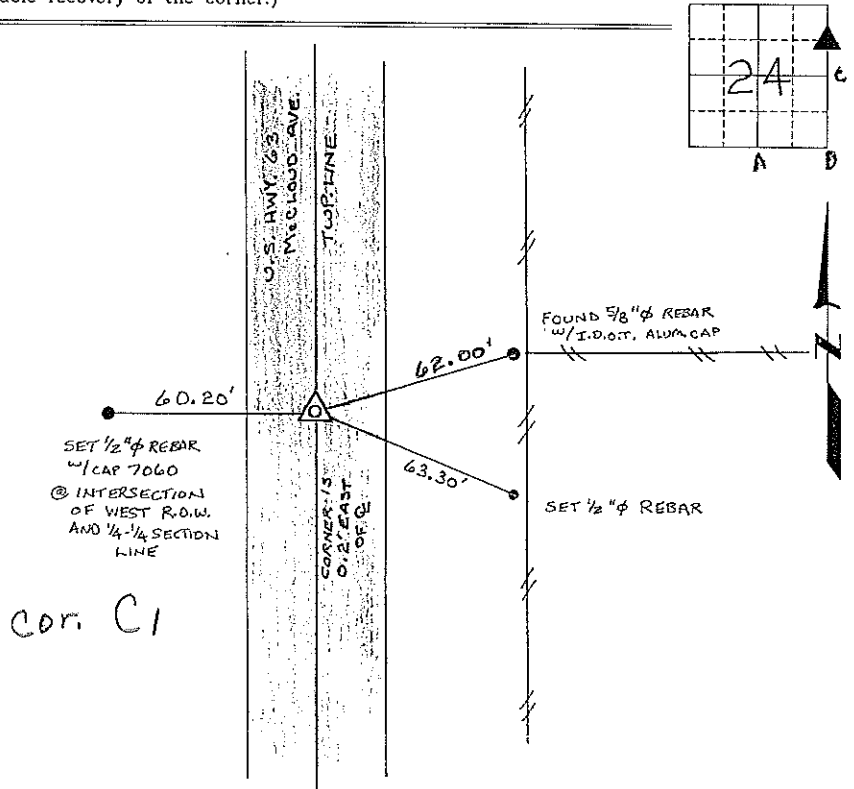
Land Survey Monuments situated in Section 24, Township 94 North, Range 13 West, of the Fifth Principal Meridian, CHICKASAW County, Iowa. Previously recorded in NONE in County Recorder's Office.  
(book, page, document number, etc.)

(Show reason for preparing this certificate, the evidence and detailed procedures used in establishing the corner positions and monumentation found or placed.)

Monument Description and Remarks: SE CORNER NE 1/4 - NE 1/4 SECTION 24 94N R13W  
SET A PK NAIL, EQUADISTANT AND ON LINE BETWEEN THE NE CORNER AND THE E 1/4 CORNER.

PLAN - VIEW

(Show a minimum of three reference ties to durable physical objects, relevant monuments and physical conditions that will enable recovery of the corner.)



I hereby certify that this land surveying document was prepared and the related survey work was performed by me or under my direct personal supervision and that I am a duly licensed Land Surveyor under the laws of the State of Iowa.

*Lyle G. TeKippe* 10-2-97  
 Lyle G. TeKippe Date  
 License number 7060  
 My license renewal date is December 31, 1998.  
 Sheets covered by this seal: Individual



List Corners to be Indexed

Corners	Section	Twp.	Range
SE-NE-NE	24	94N	13W

Corner C1, 24-94-13  
 Placed in tie book  
 10/3/97