

# UNITED STATES PUBLIC LAND SURVEY CORNER CERTIFICATE

OF

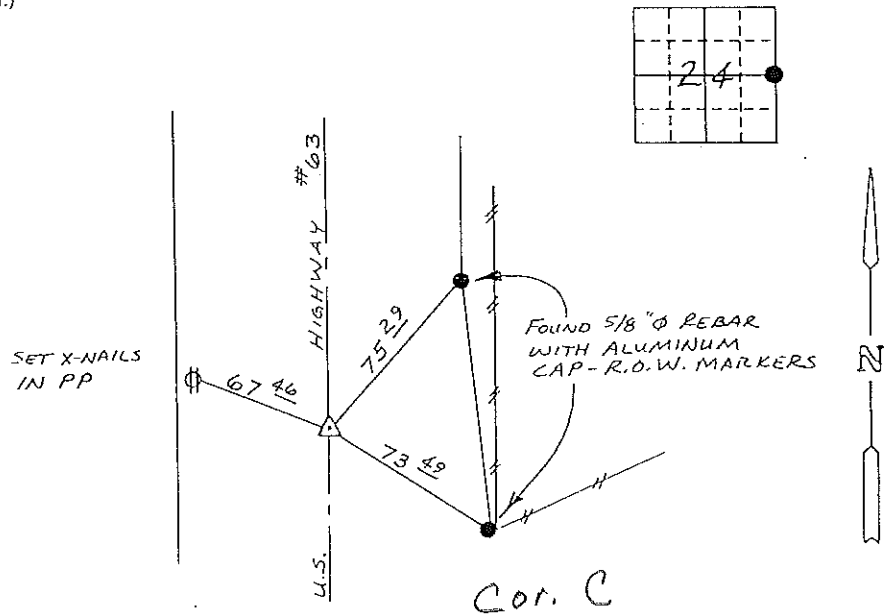
Land Survey Monuments situated in Section 24, Township 94N, Range 13W, of the Fifth Principal Meridian, CHICKASAW County, Iowa. Previously recorded in (NONE) in County Recorder's Office.

(Show reason for preparing this certificate, the evidence and detailed procedures used in establishing the corner positions and monumentation found or placed.)

Monument Description and Remarks: FOUND IDOT ALUMINUM CAP IN ASPHALT PAVEMENT.

### PLAN - VIEW

(Show a minimum of three reference ties to durable physical objects, relevant monuments and physical conditions that will enable recovery of the corner.)

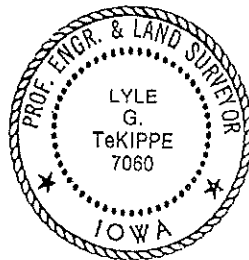


### E 1/4 CORNER SECTION 24-T94N-R13W

I hereby certify that the survey work was completed and this certificate was prepared by me or under my direct personal supervision and that I am a duly registered land surveyor under the laws of the state of Iowa.

Signature: Lyle G. TeKippe  
Name typed or printed: Lyle G. TeKippe  
Date: 4-10-92 Reg. No. 7060

Corners	Section	Twp	Range
E 1/4	24	94N	13W



SEAL

*Checked  
24  
11-13  
Placed in to  
Book  
11/15/92*