

Section B-94-13  
 As referred to in  
 Engr. Tie Book.

SLSI 9-90

UNITED STATES PUBLIC LAND SURVEY CORNER CERTIFICATE

OF 13

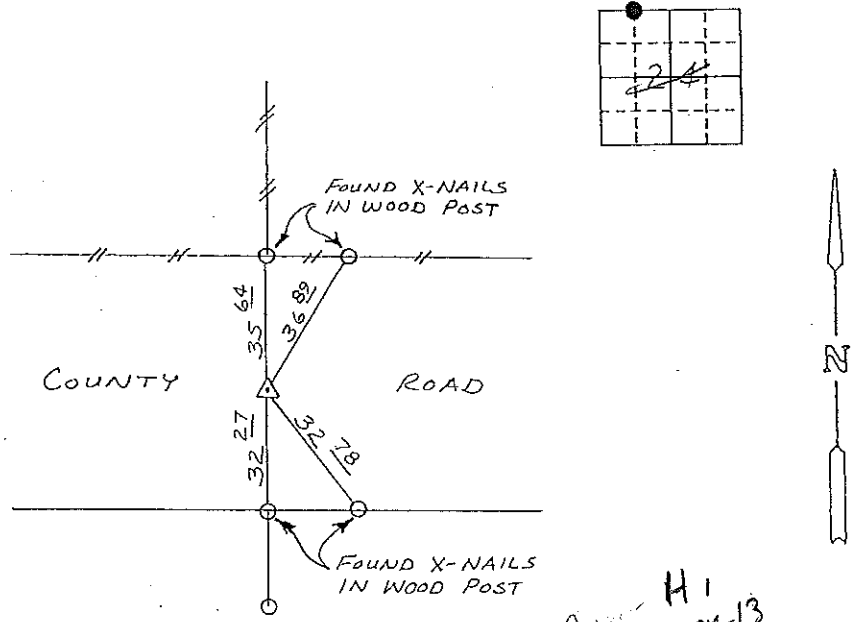
Land Survey Monuments situated in Section 24, Township 94N, Range 13W, of the Fifth Principal Meridian, CHICKASAW County, Iowa.  
 Previously recorded in (NONE) in County Recorder's Office.  
(book, page, document number, etc.)

(Show reason for preparing this certificate, the evidence and detailed procedures used in establishing the corner positions and monumentation found or placed.)

Monument Description and Remarks: FOUND 30<sup>d</sup> SPIKE OVER MAGNETIC READING.

PLAN - VIEW

(Show a minimum of three reference ties to durable physical objects, relevant monuments and physical conditions that will enable recovery of the corner.)



Case - H 1  
 13-94-13

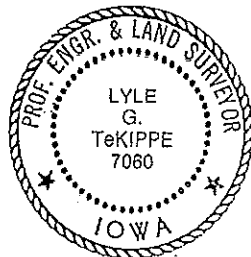
NW CORNER NE 1/4 - NW 1/4  
 SECTION 24 - T94N - R13W

I hereby certify that the survey work was completed and this certificate was prepared by me or under my direct personal supervision and that I am a duly registered land surveyor under the laws of the state of Iowa.

Signature: Lyle G. TeKippe  
 Name typed or printed: Lyle G. TeKippe  
 Date: 4-10-92 Reg. No. 7060

Corners	Section	Twp	Range
NW CORNER NE 1/4 - NW 1/4	24	94N	13W

SEAL



Placed in  
 Tie Book. 4/15/92

149-263