

Section 13-94-13
As referred to in
Engr. Tie Book

SLSI 9-90

UNITED STATES PUBLIC LAND SURVEY CORNER CERTIFICATE

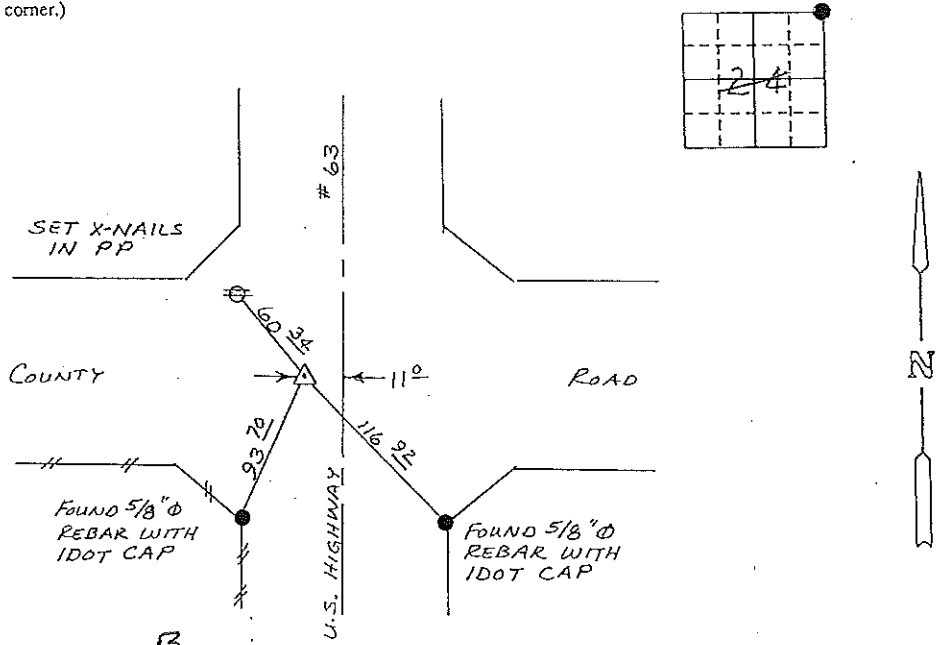
OF 13
Land Survey Monuments situated in Section 24, Township 94N, Range 13W, of the Fifth Principal Meridian, CHICKASAW County, Iowa.
Previously recorded in (None) in County Recorder's Office.
(book, page, document number, etc.)

(Show reason for preparing this certificate, the evidence and detailed procedures used in establishing the corner positions and monumentation found or placed.)

Monument Description and Remarks: FOUND IDOT ALUMINUM CAP IN ASPHALT PAVEMENT.

PLAN - VIEW

(Show a minimum of three reference ties to durable physical objects, relevant monuments and physical conditions that will enable recovery of the corner.)



Cor B
13-94-13

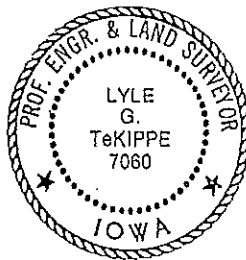
NE CORNER SECTION 24-T94N-R13W

I hereby certify that the survey work was completed and this certificate was prepared by me or under my direct personal supervision and that I am a duly registered land surveyor under the laws of the state of Iowa.

Signature: Lyle G. TeKippe
Name typed or printed: Lyle G. TeKippe
Date: 4-10-92 Reg. No. 7060

Corners	List Corners to be Indexed Section	Twp	Range
NE	24	94N	13W

SEAL



*Placed in Tie Book
4/10/92*

149-265

"County Engineers Copy"