

2007-2072
10/24/2007

TeKIPPE ENGINEERING, P.C., 128 South Vine Street, West Union, Iowa 52175 Phone (563) 422-5131

UNITED STATES PUBLIC LAND SURVEY CORNER CERTIFICATE

OF

Land Survey Monuments situated in Section 24, Township 94 North, Range 13 West of the Fifth Principal Meridian, CHICKASAW County, Iowa. Previously recorded in Deed Book 149 Page 266 in County Recorder's Office.
(book page, document number, etc.)

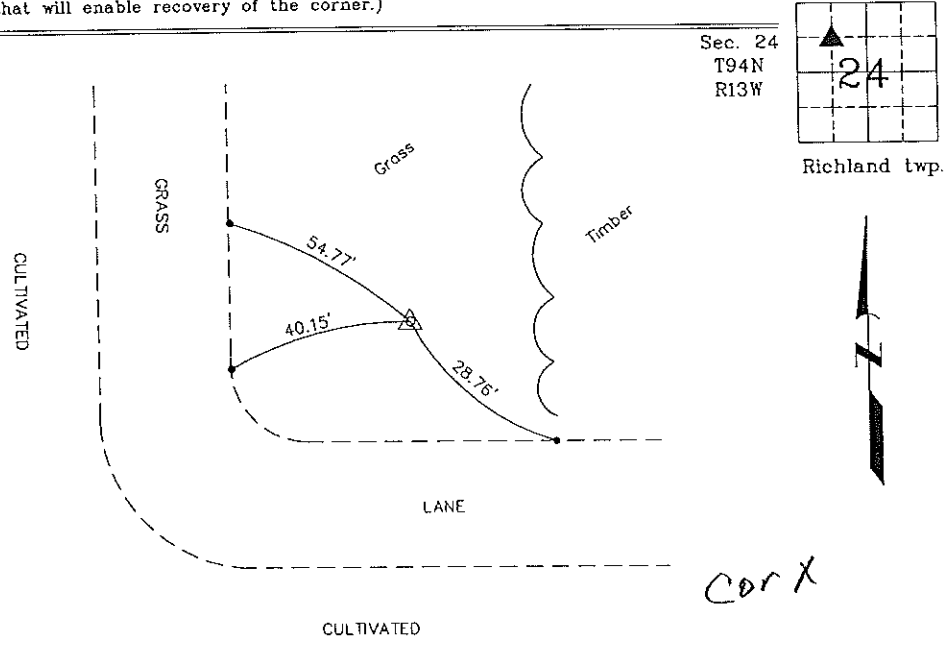
(Show reason for preparing this certificate, the evidence and detailed procedures used in establishing the corner positions and monumentation found or placed.)

Monument Description and Remarks: NE Corner SW 1/4 - NW 1/4 Section 24 T94N R13W: Found 1/2"Ø rebar without cap. Updated certificate with new reference ties.

PLAN - VIEW

Project Number 07188 LS
FB 46M PC 42-48

(Show a minimum of three reference ties to durable physical objects, relevant monuments and physical conditions that will enable recovery of the corner.)



NE Corner SW 1/4 - NW 1/4 of Section 24 T94N R13W
Found 1/2"Ø rebar



I hereby certify that this land surveying document was prepared and the related survey work was performed by me or under my direct personal supervision and that I am a duly licensed Land Surveyor under the laws of the State of Iowa.
Gary L. Casady 10-23-07
Date
License number 125321
My license renewal date is December 31, 2008.
Sheets covered by this seal: Individual

List Corners to be Indexed			
Corners	Section	Twp.	Range
NE-SW-NW	24	94N	13W

X:\Section Corners\Sec. 24\24-94-13g.dwg