

Section 26-94-13
 As returned to in
 Engr. Tie Book

2008-0197
 2-4-08 @0954

PREPARED BY DENNIS R. PRANGE, SHOFF CONSULTING ENGINEERS, LC, 209 FRANKLIN STREET, SUITE A2, CEDAR FALLS, IOWA 50613 (319) 266-0258

UNITED STATES PUBLIC LAND SURVEY CORNER CERTIFICATE
 OF

Land Survey Monuments situated in Section No. 25²⁶, Township No. 94 North, Range No. 13 West, of the Fifth Principal Meridian, Chickasaw County, Iowa.
 Previously recorded in Book N/A on Page _____ in the office of the County Recorder.

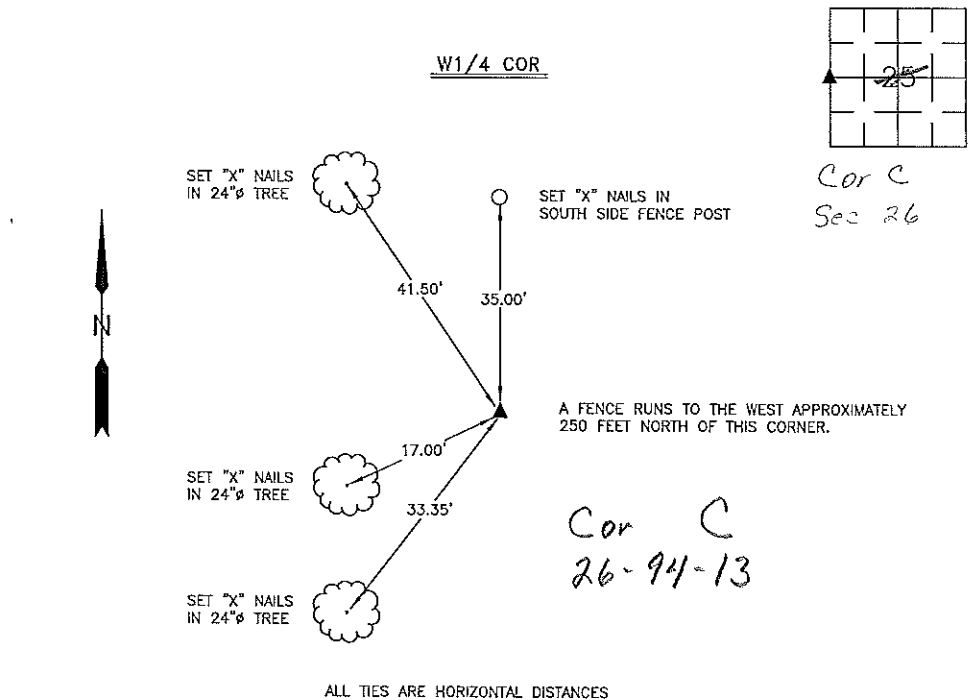
(Show reason for preparing this certificate, the evidence and detailed procedures used in establishing the corner positions and monumentation found or placed.)

Monument Description and Remarks: West 1/4 Corner Sec. 25-94-13 - County Engineers Office did not have any ties for this corner. The Iowa D.O.T. had no Survey information about this corner. The Original Field Notes indicated that a Post was set in a Mound and that there was a Pit 8 Links East. Searched for this but nothing found. Searched for the Southwest Corner of Section 25 and nothing was found there either. Found broken off steel post 1290 feet West of Center of Section 25. Extended this line West to the intersection of traces of an old North/South fence. Set a 1/2" X 24" rebar w/cap no. 10040 at this location.

PLAN - VIEW

(Show a minimum of three reference ties to durable physical objects, relevant monuments and physical conditions that will enable recovery of the corner.)

NOT TO SCALE

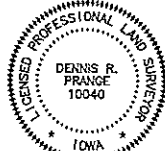


I hereby certify that this land surveying document was prepared by me or under my direct personal supervision and that I am a duly licensed Professional Land Surveyor under the laws of the State of Iowa.

Signed: Dennis R. Prange
 Dennis R. Prange, L.S. Iowa License No. 10040

Date: February 9, 2007

SEAL



My License renewal date is December 31, 2008.
 Pages or sheets covered by this seal: this page only

Corners	List Corners to be Indexed Section	Range
W1/4 COR	25	94

Drawn by: DRP

Checked by: