

Instrument #: 2017-2121
 12/14/2017 04:17:12 PM Total Pages: 1
 SCC SECTION CORNER CERTIFICATES
 Recording Fee: \$ 7.00
 Cindy Messersmith, Recorder, Chickasaw County Iowa



Prepared by & Return to: Herold - Recks Surveying, 10 East Main Street, New Hampton, IA 50655, Ph. 641-394-2725

United States Public Land Survey Corner Certificate

Land Survey Monument situated in
 Section 22, Township 94 North, Range 13 West of the Fifth Principal Meridian, Chickasaw County, Iowa.
 Not on file in the County Recorder's office.

This certificate is being prepared in compliance with Iowa Code Chapter 355.11 because:

- There is no certificate on file for this corner.
- There are no longer three valid ties of record.
- There are changes to reference ties of record.
- There is change of monumentation of record.
- To clarify description of record monument (ties).

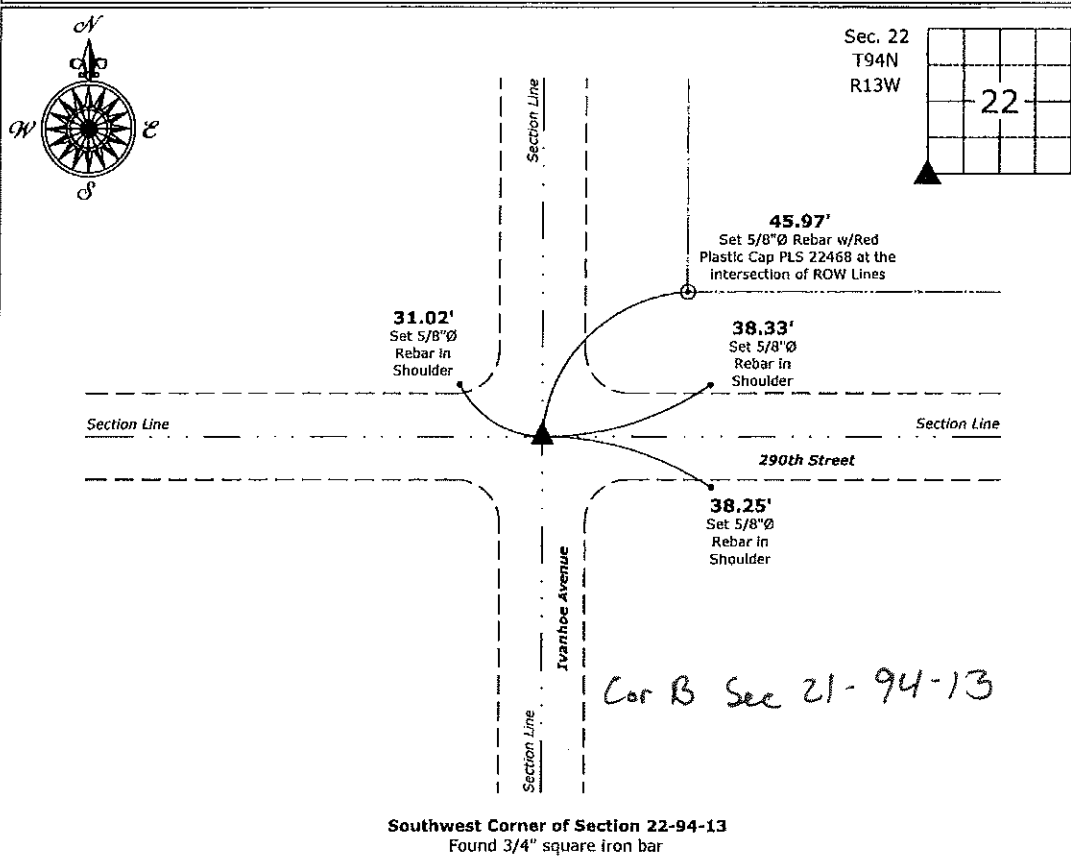
Monument Description and Remarks:

Southwest Corner: Found 3/4" square iron bar with information obtained from Chickasaw County Engineer's Field Book Richland Twp. Ties to Corners, Section 21, Corner B.

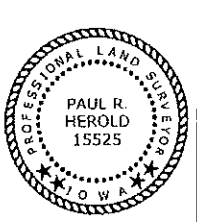
An extensive search of all of the records within the County offices was performed as part of the section corner recovery, No records were located of the perpetuation of a monument at this corner.

Plan View

(Show a minimum of three reference ties to durable physical objects, relevant monuments and physical conditions that will enable recovery of the corner.)



Southwest Corner of Section 22-94-13
 Found 3/4" square iron bar



I hereby certify that this land surveying document was prepared and the related survey work was performed by me or under my direct personal supervision and that I am a duly licensed Land Surveyor under the laws of the State of Iowa.

Paul R. Herold 12-14-17
 Paul R. Herold Date:

License number 15525
 My license renewal date is December 31, 2018.
 Sheets covered by this seal: Individual sheet only

List Corner to be Indexed

Corner	Section	Twp.	Range
SW	22	94	13

Project Number: 2017-136

FB: Chickasaw 8, Pgs. 48-49

File: S:_CAD Projects\County Control Systems\CHICKASAW\CHICK-48.dwg, 12/13/2017 4:43:37 PM