

Instrument #: 2021-0215
 01/29/2021 09:36:10 AM Total Pages: 1
 SCC SECTION CORNER CERTIFICATES
 Recording Fee: \$ 7.00
 Shirley Iroya, Recorder, Chickasaw County Iowa



Prepared By and Return To: BENJAMIN V. STARK STARK SURVEYING INC., 1622 South Taft, Mason City, Iowa, 50401 (641) 423-7847

UNITED STATES PUBLIC LAND SURVEY CORNER CERTIFICATE OF

Land Survey Monuments situated in Section 2, Township 94N, Range 13W, of the Fifth P.M., Chickasaw County, Iowa. Reason for Certificate Set 3 Monuments.

Monument Description and Remarks:

CENTER SEC. 2-T94N-R13W SET A 1/2" REBAR W/ YPC23709 AT THE INTERSECTION OF THE CORRESPONDING 1/4 CORNERS TO HONOR PREVIOUS SURVEY WORK IN THE AREA.

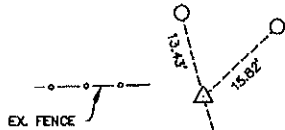
NW COR. SW 1/4 SE 1/4 SEC. 2-T94N-R13W SET A 1/2" REBAR W/ YPC23709 MIDPOINT AND ON-LINE BETWEEN THE CENTER AND THE S1/4 COR. OF SEC. 2-T94N-R13W.

NE COR. SW 1/4 SE 1/4 SEC. 2-T94N-R13W SET A 1/2" REBAR W/ YPC23709 AT THE INTERSECTION OF THE CORRESPONDING 1/4 1/4 CORNERS.

PLAN - VIEW

(Show a minimum of three reference ties to durable physical conditions that will enable recovery of the corner.)

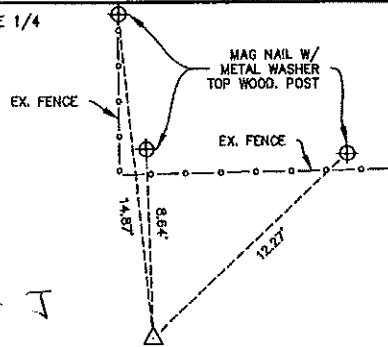
CENTER
 SEC. 2-T94N-R13W
 SET 1/2" REBAR
 W/ YPC 23709



NOT TO SCALE

Cor D - 2-94-13

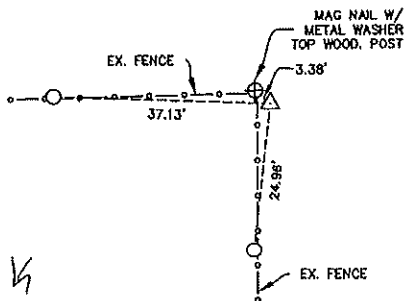
NW COR. SW 1/4 SE 1/4
 SEC. 2-T94N-R13W
 SET 1/2" REBAR
 W/ YPC 23709



NOT TO SCALE

Cor J

NE COR. SW 1/4 SE 1/4
 SEC. 2-T94N-R13W
 SET 1/2" REBAR
 W/ YPC 23709



NOT TO SCALE

Cor K

LEGEND

- △ SECTION CORNER SET AS NOTED
- ▲ SECTION CORNER FOUND
- FOUND PROPERTY PIN AS NOTED
- POWER POLE
- EXISTING FENCELINE
- × FOUND "X" NAILS
- SET 1/2" REBAR
- ⊕ SET MAG NAIL W/ METAL WASHER

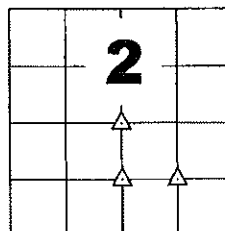
I hereby certify that this Land Surveying document was prepared and the related survey work was performed by me or under my direct personal supervision and that I am a duly licensed Land Surveyor under the laws of the State of Iowa.

Benjamin Stark *1-24-21*

Benjamin V. Stark
 License Number 23709
 My license renewal date is December 31, 2021

LAND CORNER TO BE INDEXED

Corners	Sections	Twp	Range
CENTER	2	94N	13W
NW COR. SW 1/4 SE 1/4	2	94N	13W
NE COR. SW 1/4 SE 1/4	2	94N	13W



**STARK
SURVEYING
INC.**



Seal

PROJECT NO.: 20344
 SHEET 1 OF 1