

Prepared by & Return to: Herold - Reicks Surveying, 10 East Main Street, New Hampton, IA 50659, Ph. 64-394-2725

United States Public Land Survey Corner Certificate

Land Survey Monument situated in
 Section 19, Township 94 North, Range 12 West of the Fifth Principal Meridian, **Chickasaw** County, Iowa.
 On file in **Book 149, Page 265** in the County Recorder's office.

This certificate is being prepared in compliance with Iowa Code Chapter 355.11 because:

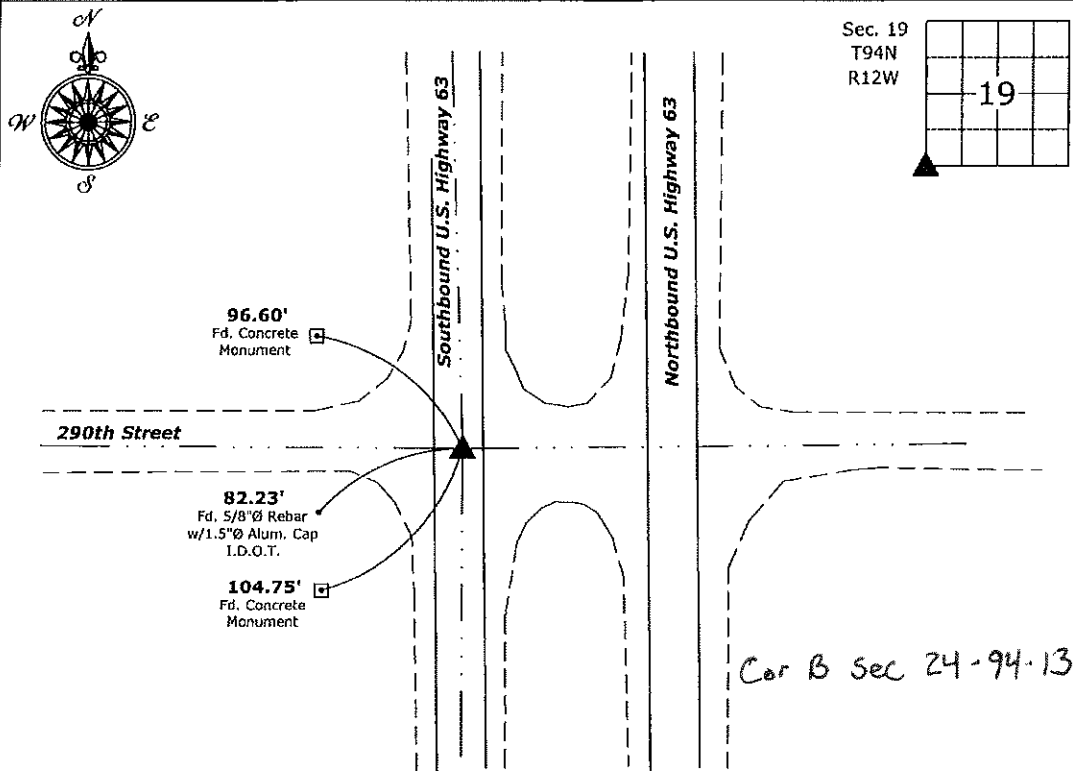
- There is no certificate on file for this corner.
- There are no longer three valid ties of record.
- There are changes to reference ties of record.
- There is change of monumentation of record.
- To clarify description of record monument (ties).

Monument Description and Remarks:

SW Corner: Fd. Survey Mark Nail w/Stainless Steel Washer I.D.O.T. with information obtained from the previously recorded Section Corner Certificate, the Corner was re-monumented by the Iowa Department of Transportation after and HMA overlay.

Plan View

(Show a minimum of three reference ties to durable physical objects, relevant monuments and physical conditions that will enable recovery of the corner.)



SW Corner of Section 19-94-12
 Fd. Survey Mark Nail w/Stainless Steel Washer I.D.O.T.



I hereby certify that this land surveying document was prepared and the related survey work was performed by me or under my direct personal supervision and that I am a duly licensed Land Surveyor under the laws of the State of Iowa.

Paul R. Herold 12-13-17
 Paul R. Herold Date:
 License number 15525
 My license renewal date is December 31, 2018.
 Sheets covered by this seal: Individual sheet only

List Corner to be Indexed			
Corner	Section	Twp.	Range
SW	19	94	12

Project Number: 2017-100
 FB: Chickasaw County 8, Pgs. 49-50