

Section 24-94-14
 As referred to in
 Engr. Title Book

UNITED STATES PUBLIC LAND SURVEY CORNER CERTIFICATE

Land Survey Monuments situated in Section 19 24, Township 94 North, Range 13 West, of the Fifth Principal Meridian, Chickasaw County, Iowa.

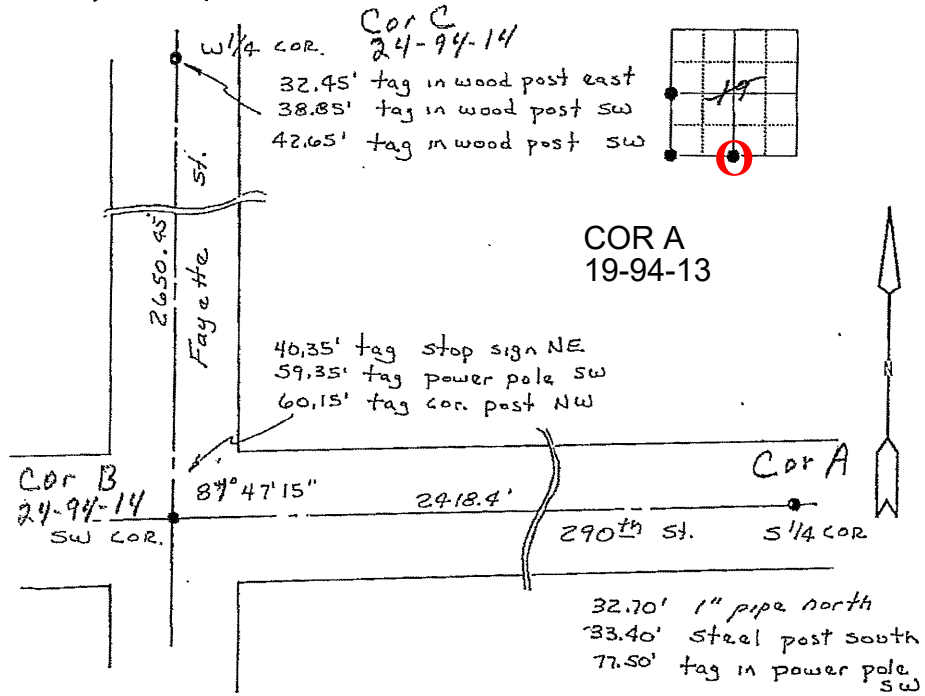
Previously recorded in N/A in County Recorder's Office.
(book, page, document number, etc.)

(Show reason for preparing this certificate, the evidence and detailed procedures used in establishing the corner positions and monumentation found or placed.)

Monument Description and Remarks: Found pin with alum. cap at West 1/4 cor.
Found spike with ribbon over iron pin at Southwest cor.
Found pipe, pinched at top at South 1/4 corner.

PLAN - VIEW

(Show a minimum of three reference ties to durable physical objects, relevant monuments and physical conditions that will enable recovery of the corner)



169-350

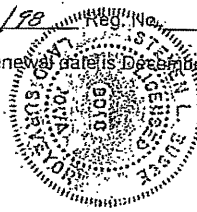
I hereby certify that the survey work was completed and this land surveying document was prepared by me or under my direct personal supervision and that I am a duly licensed land surveyor under the laws of the state of Iowa

Signature: Steve Busse
 Name typed or printed STEVE BUSSE

Date: 11/3/98 Reg. No. 9018

My license renewal date is December 31, 1998

SEAL



Corners	List Corners to be Indexed		
	Section	Twp	Range
W 1/4 COR.	19	94	13
SW COR.	19	94	13
S 1/4 COR.	19	94	13

DOCUMENT No. 01058 FILED FOR RECORD THE 12th DAY OF November 1998 AT 10:31 O'CLOCK A.M. BOOK 169 PAGE 350

STATE OF IOWA, CHICKASAW COUNTY. Steve Busse Recorder
 By Leitha N. Ross Deputy