

Prepared by & Return to: Herold - Reicks Surveying, 19 East Main Street, New Hampton, IA 50659, Ph. 641-394-3725

UNITED STATES PUBLIC LAND SURVEY CORNER CERTIFICATE

Land Survey Monuments situated in Section ^{2.5}30, Township ^{1.3}94 North, Range 12 West of the Fifth Principal Meridian, Chickasaw County, Iowa. 1.) Previously recorded in Doc. #2008-1525 in the County Recorder's office. 2.) Not previously recorded in the County Recorder's office.

This certificate is being prepared in compliance with Iowa Code Chapter 355.11 because:

- 2 There is no certificate on file for this corner.
- There are no longer three valid ties of record.
- There are changes to reference ties of record.
- 1 There is change of monumentation of record.
- To clarify description of record monument (ties).

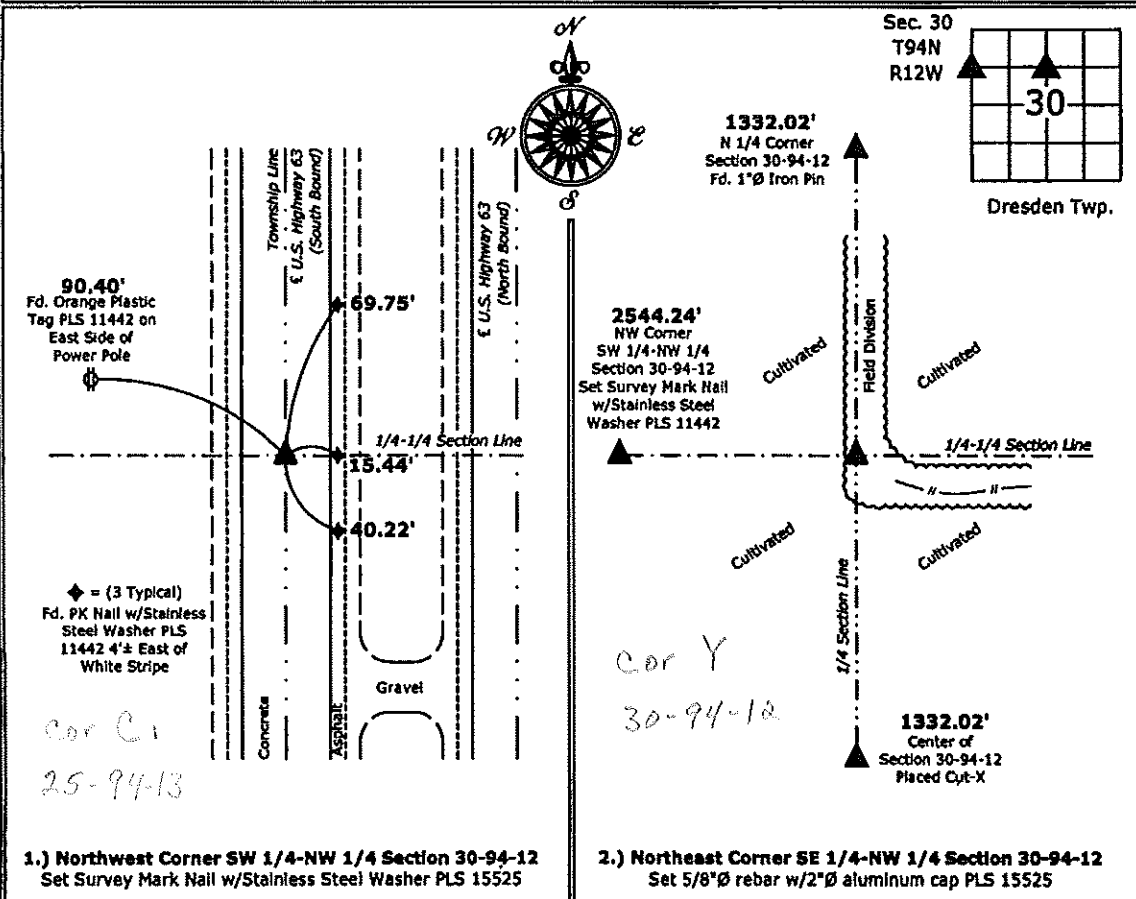
Monument Description and Remarks:

1.) Northwest Corner SW 1/4-NW 1/4: Set Survey Mark Nail w/Stainless Steel Washer PLS 15525 from ties, as shown on previous Section Corner Certificate.

2.) Northeast Corner SE 1/4-NW 1/4: Set 5/8"Ø rebar w/2"Ø aluminum cap PLS 15525 equidistant between the North 1/4 and Center of Section 30.

PLAN - VIEW

(Show a minimum of three reference ties to durable physical objects, relevant monuments and physical conditions that will enable recovery of the corner.)



I hereby certify that this land surveying document was prepared and the related survey work was performed by me or under my direct personal supervision and that I am a duly licensed Land Surveyor under the laws of the State of Iowa.

Paul R. Herold 7-11-13
 Paul R. Herold Date:
 License number 15525
 My license renewal date is December 31, 2014.
 Sheets covered by this seal: Individual sheet only

List Corners to be Indexed			
Corners	Section	Twp.	Range
NW-SW-NW	30	94	12
NE-SE-NW	30	94	12

Project Number: 2013-075
 FB: Chickasaw County 5, Pgs. 50-51

Section 25-94-13
 As referred to in
 Engr. Tie Book

Chickasaw Co. Recorder
 Cindy Messersmith
Fee Book 2008-1525
 08/06/2008 @1008AM
 SCC SEC COR CERT
 Book: Page: # Pages: 1
 Total Fees: \$7.00

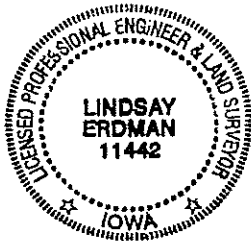
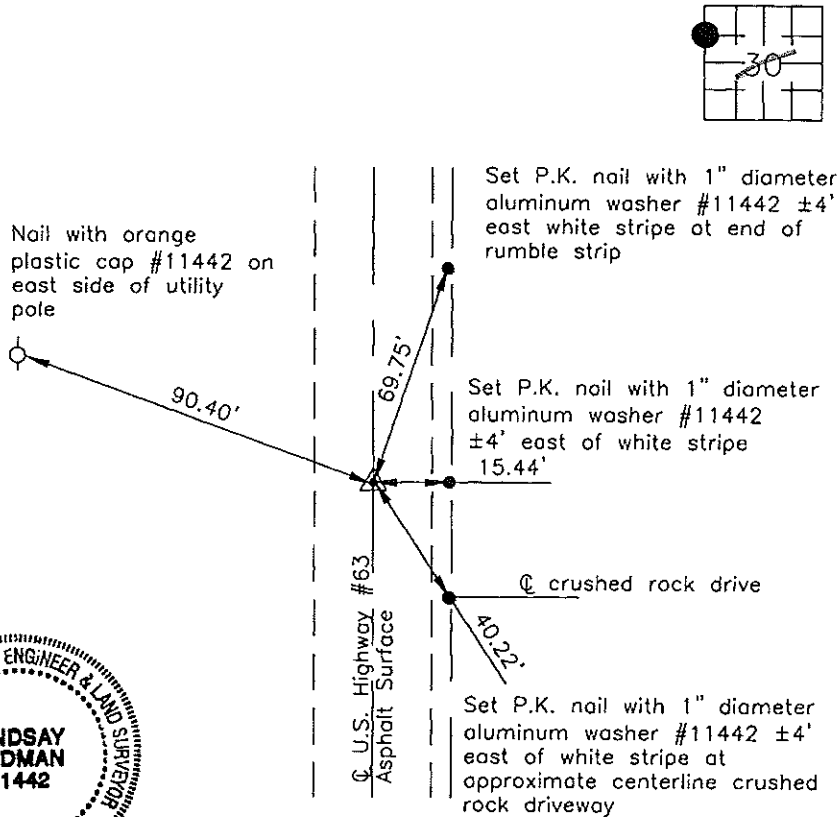
Prepared by: Erdman Engineering, P.C., 708 Commerce Drive, P.O. Box 246, Decorah, Iowa 52101 (563) 382-4194

United States Public Land Survey Corner Certificate
 of 25 ¹³

Land Survey Monuments situated in Section 30, Township 94, Range 12 West of the 5th Principal Meridian in Chickasaw County, Iowa. Previously recorded in does not apply in the county Recorder's Office.

Monument Description and Remarks: This certificate is prepared in accordance with Section 193C of the Code of Iowa. No previous certificate has been filed for this corner location. We found no record of the WNW 1/8 Corner being set. We found no evidence of a monument in the field other than the highway. We found the W 1/4 Corner and the NW Corner. We set a Mag-nail with 1 1/2" diameter stainless steel washer #11442 on line and equidistant between the W 1/4 Corner and the NW Corner as the WNW 1/8 Corner of Section 30, Township 94 North, Range 12 West.

Plan-View



Cor C1
 25-94-13

I hereby certify that this land surveying document was prepared and the related survey work was performed by me or under my direct personal supervision and that I am a duly licensed Land Surveyor under the laws of the State of Iowa.

Signature: [Signature]
 Lindsay Erdman, P.E. and P.L.S. Iowa License Number 11442

Date: 8/11/08

My license renewal date is December 31, 2008

Corner(s) to be Indexed

Corner	Section	Township	Range
WNW 1/8	30	94	12