

Prepared by & Return to: Herold - Reicks Surveying, 18 East Main Street, New Hampton, IA 50659, Ph 641-394-2725

UNITED STATES PUBLIC LAND SURVEY CORNER CERTIFICATE

Land Survey Monuments situated in Section ^{2.5}30, Township ^{1.3}94 North, Range 12 West of the Fifth Principal Meridian, Chickasaw County, Iowa. 1.) Previously recorded in Doc. #2008-1525 in the County Recorder's office. 2.) Not previously recorded in the County Recorder's office.

This certificate is being prepared in compliance with Iowa Code Chapter 355.11 because:

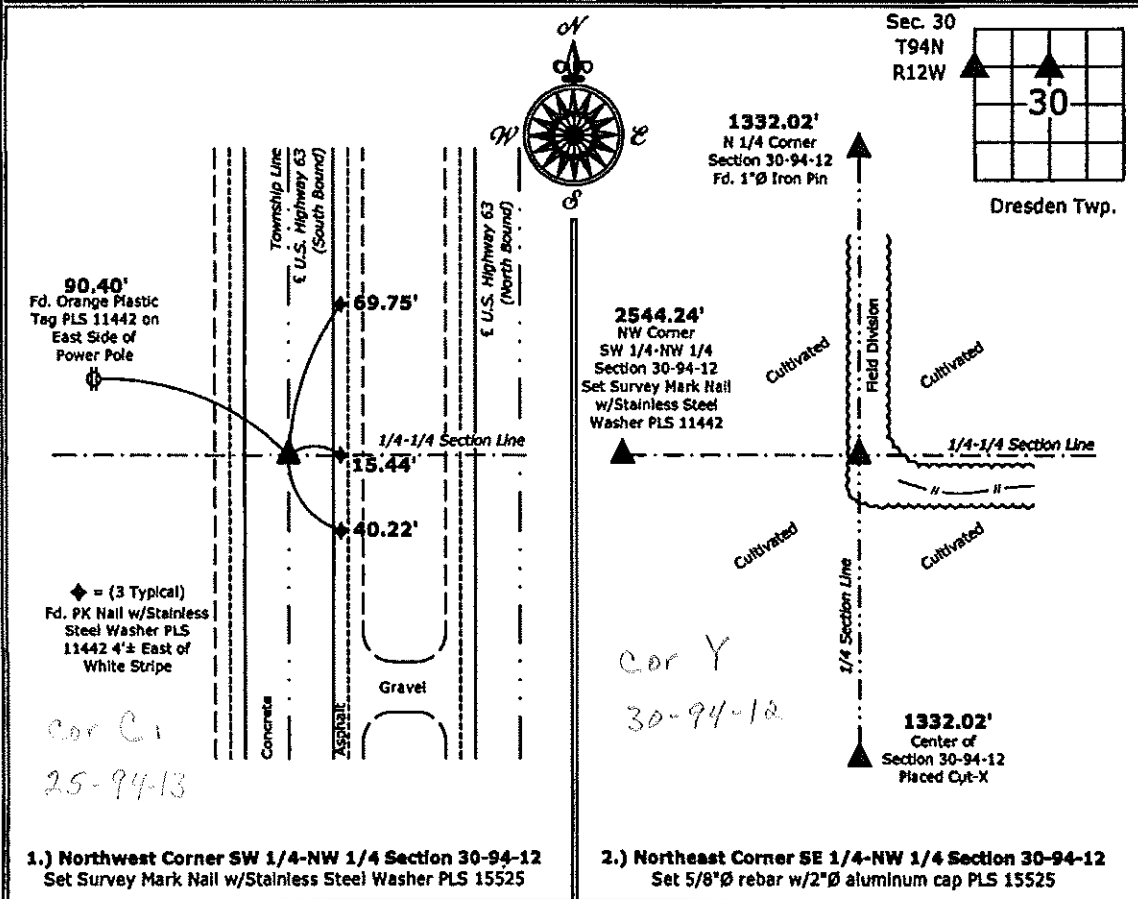
- 2 There is no certificate on file for this corner.
- There are no longer three valid ties of record.
- There are changes to reference ties of record.
- 1 There is change of monumentation of record.
- To clarify description of record monument (ties).

Monument Description and Remarks:

- 1.) Northwest Corner SW 1/4-NW 1/4: Set Survey Mark Nail w/Stainless Steel Washer PLS 15525 from ties, as shown on previous Section Corner Certificate.
- 2.) Northeast Corner SE 1/4-NW 1/4: Set 5/8"Ø rebar w/2"Ø aluminum cap PLS 15525 equidistant between the North 1/4 and Center of Section 30.

PLAN - VIEW

(Show a minimum of three reference ties to durable physical objects, relevant monuments and physical conditions that will enable recovery of the corner.)



I hereby certify that this land surveying document was prepared and the related survey work was performed by me or under my direct personal supervision and that I am a duly licensed Land Surveyor under the laws of the State of Iowa.

Paul R. Herold 7-11-13
 Paul R. Herold Date:
 License number 15525
 My license renewal date is December 31, 2014.
 Sheets covered by this seal: Individual sheet only

List Corners to be Indexed			
Corners	Section	Twp.	Range
NW-SW-NW	30	94	12
NE-SE-NW	30	94	12

Project Number: 2013-075
 FB: Chickasaw County 5, Pgs. 50-51