

Chickasaw Co. Recorder
 Cindy Messersmith
Fee Book 2013-1788
 10/31/2013 @1003AM
 SCC: SEC COR CERT # Pages: 1
 Book: Page:
 Total Fees: \$7.00

Prepared by & Return to Herold - Reicks Surveying, 10 East Main Street, New Hampton, IA 50659, Ph. 641-394-2725

UNITED STATES PUBLIC LAND SURVEY CORNER CERTIFICATE

Land Survey Monuments situated in Section ³⁰ 31, Township ¹³ 94 North, Range 12 West of the Fifth Principal Meridian, Chickasaw County, Iowa. Previously recorded in Bk. 155, Pg. 272 in the County Recorder's office.

This certificate is being prepared in compliance with Iowa Code Chapter 355.11 because:

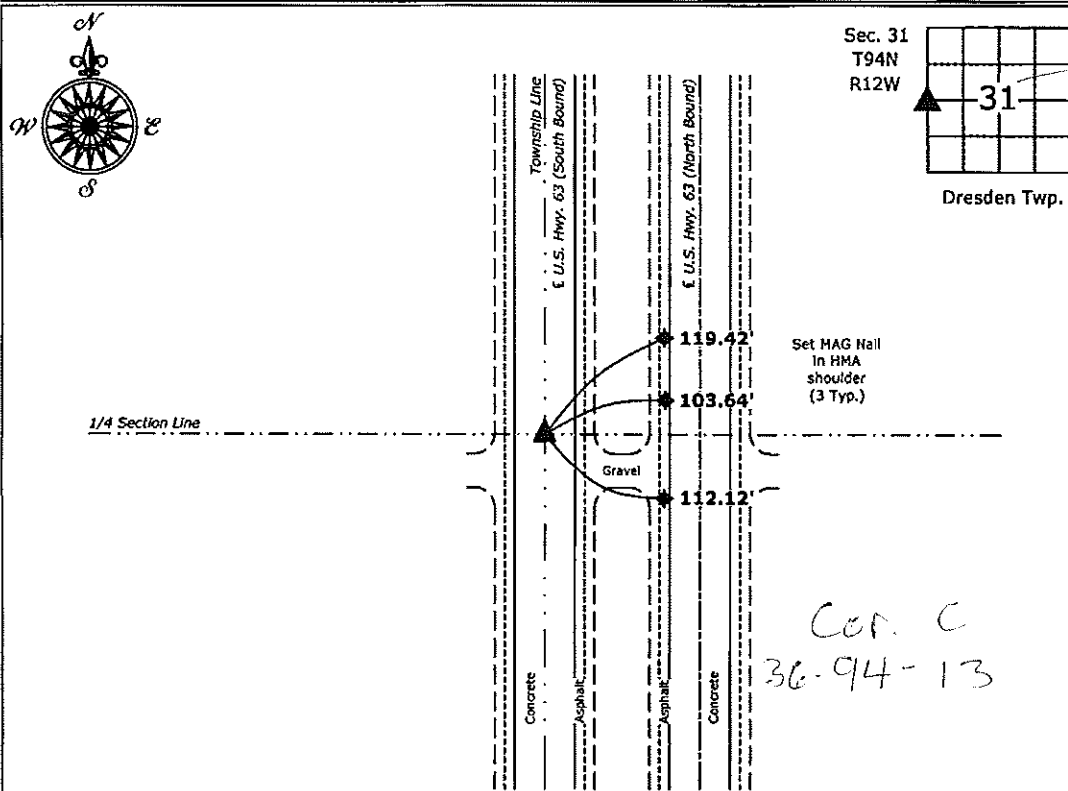
- There is no certificate on file for this corner.
- There are no longer three valid ties of record.
- There are changes to reference ties of record.
- There is change of monumentation of record.
- To clarify description of record monument (ties).

Monument Description and Remarks:

West 1/4 Corner: Fd. Survey Mark Nail w/Stainless Steel Washer I.D.O.T. with information obtained from the previous Section Corner certificate.

PLAN - VIEW

(Show a minimum of three reference ties to durable physical objects, relevant monuments and physical conditions that will enable recovery of the corner.)



West 1/4 Section 31-94-12
 Fd. Survey Mark Nail w/Stainless Steel Washer I.D.O.T.



I hereby certify that this land surveying document was prepared and the related survey work was performed by me or under my direct personal supervision and that I am a duly licensed Land Surveyor under the laws of the State of Iowa.
Kirk D. Reicks 10-28-13
 Kirk D. Reicks Date:
 License number 19211
 My license renewal date is December 31, 2014.
 Sheets covered by this seal: Individual sheet only

List Corners to be Indexed			
Corners	Section	Twp.	Range
W 1/4	31	94	12

Project Number: 2013-1863
 FB: Chickasaw 5, Pgs. 69-70

File: S:_CAD Projects\2013-183\2013-183.dwg, 10/18/2013 9:25:00 AM

30
 94-13

Cor. C
 30-94-13

Section 25-94-13
 AS referred to in
 Engr. The Book

LSLSI 9-90

UNITED STATES PUBLIC LAND SURVEY CORNER CERTIFICATE

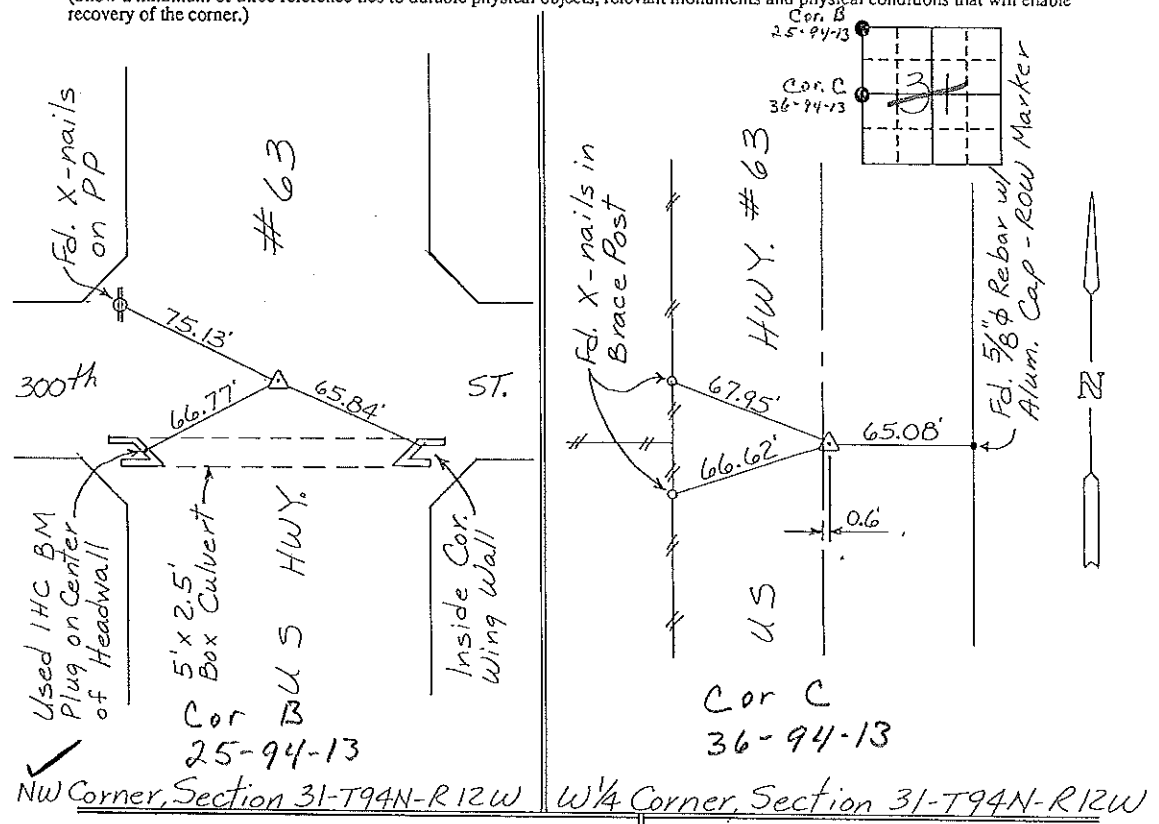
OF
 Land Survey Monuments situated in Section 31²⁵, Township 94 NORTH, Range
12 WEST, of the Fifth Principal Meridian, CHICKASAW County, Iowa.
 Previously recorded in NONE in County Recorder's Office.
(book, page, document number, etc.)

(Show reason for preparing this certificate, the evidence and detailed procedures used in establishing the corner positions and monumentation found or placed.)

Monument Description and Remarks: NW CORNER, SECTION 31-T94N-R12W:
Found IDOT Aluminum Cap in Asphalt.
W 1/4 CORNER, SECTION 31-T94N-R12W: Found IDOT Aluminum
Cap in Asphalt 0.6' E. of the E of US Highway #63.

PLAN - VIEW

(Show a minimum of three reference ties to durable physical objects, relevant monuments and physical conditions that will enable recovery of the corner.)

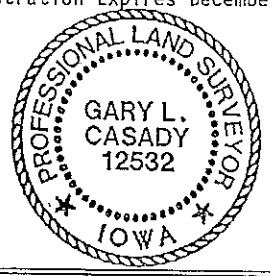


NW Corner, Section 31-T94N-R12W W 1/4 Corner, Section 31-T94N-R12W

I hereby certify that the survey work was completed and this certificate was prepared by me or under my direct personal supervision and that I am a duly registered land surveyor under the laws of the state of Iowa.

Signature: Gary L. Casady
 Name typed or printed: Gary L. Casady
 Date: 6-22-94 Reg. No. 12532
 My Registration Expires December 31, 1994

Comers	List Corners to be Indexed	Section	Twp	Range
NW	Cor B	31	94N	12W
		25-	94-13	
W 1/4		31	94N	12W
	Cor C			
				36-94-13



SEAL

Placed in the book
 7/20/94