

Section 25-94-13
 AS referred to in
 Engr. The Book

LSLSI 9-90

UNITED STATES PUBLIC LAND SURVEY CORNER CERTIFICATE

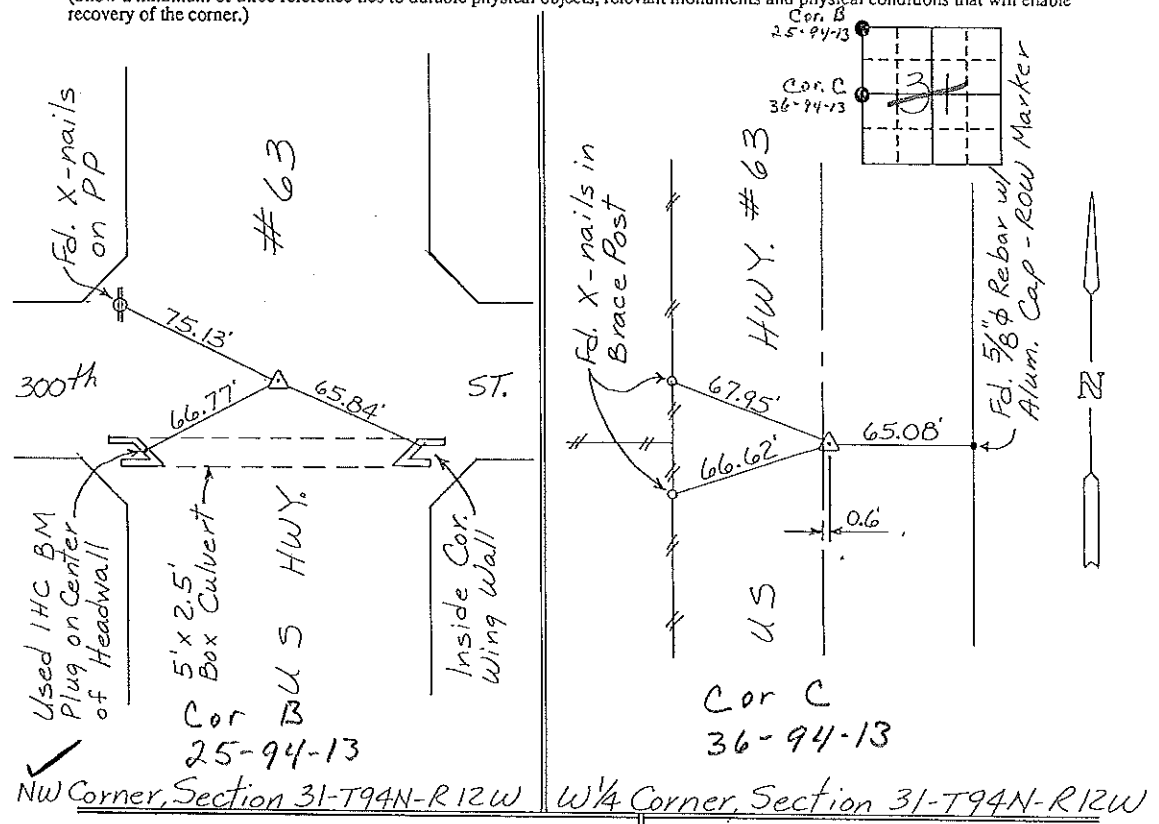
OF
 Land Survey Monuments situated in Section 31²⁵, Township 94 NORTH, Range
12 WEST, of the Fifth Principal Meridian, CHICKASAW County, Iowa.
 Previously recorded in NONE in County Recorder's Office.
(book, page, document number, etc.)

(Show reason for preparing this certificate, the evidence and detailed procedures used in establishing the corner positions and monumentation found or placed.)

Monument Description and Remarks: NW CORNER, SECTION 31-T94N-R12W:
Found IDOT Aluminum Cap in Asphalt.
W 1/4 CORNER, SECTION 31-T94N-R12W: Found IDOT Aluminum
Cap in Asphalt 0.6' E. of the E of US Highway #63.

PLAN - VIEW

(Show a minimum of three reference ties to durable physical objects, relevant monuments and physical conditions that will enable recovery of the corner.)

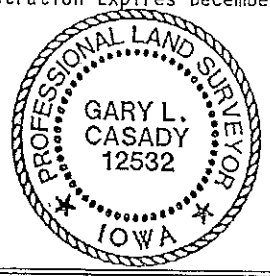


NW Corner, Section 31-T94N-R12W W 1/4 Corner, Section 31-T94N-R12W

I hereby certify that the survey work was completed and this certificate was prepared by me or under my direct personal supervision and that I am a duly registered land surveyor under the laws of the state of Iowa.

Signature: Gary L. Casady
 Name typed or printed: Gary L. Casady
 Date: 6-22-94 Reg. No. 12532
 My Registration Expires December 31, 1994

Corners	List Corners to be Indexed	Section	Twp	Range
NW	Cor B	31	94N	12W
		25-94-13		
W 1/4	Cor C	31	94N	12W



SEAL

Placed in the book
 7/20/94