

Prepared by & Return to: Herold - Reicks Surveying, 2206 East Bremer Avenue, Waverly, IA 50677, Ph. 319-483-5187

UNITED STATES PUBLIC LAND SURVEY CORNER CERTIFICATE

Land Survey Monuments situated in Section **31**, Township **94** North, Range **13** West of the Fifth Principal Meridian, **Chickasaw** County, Iowa. **1. and 2.)** Previously not recorded in the County Recorder's office.

This certificate is being prepared in compliance with Iowa Code Chapter 355.11 because:

- 1 & 2 There is no certificate on file for this corner.
 There are no longer three valid ties of record.
 There are changes to reference ties of record.
 There is change of monumentation of record.
 To clarify description of record monument (ties).

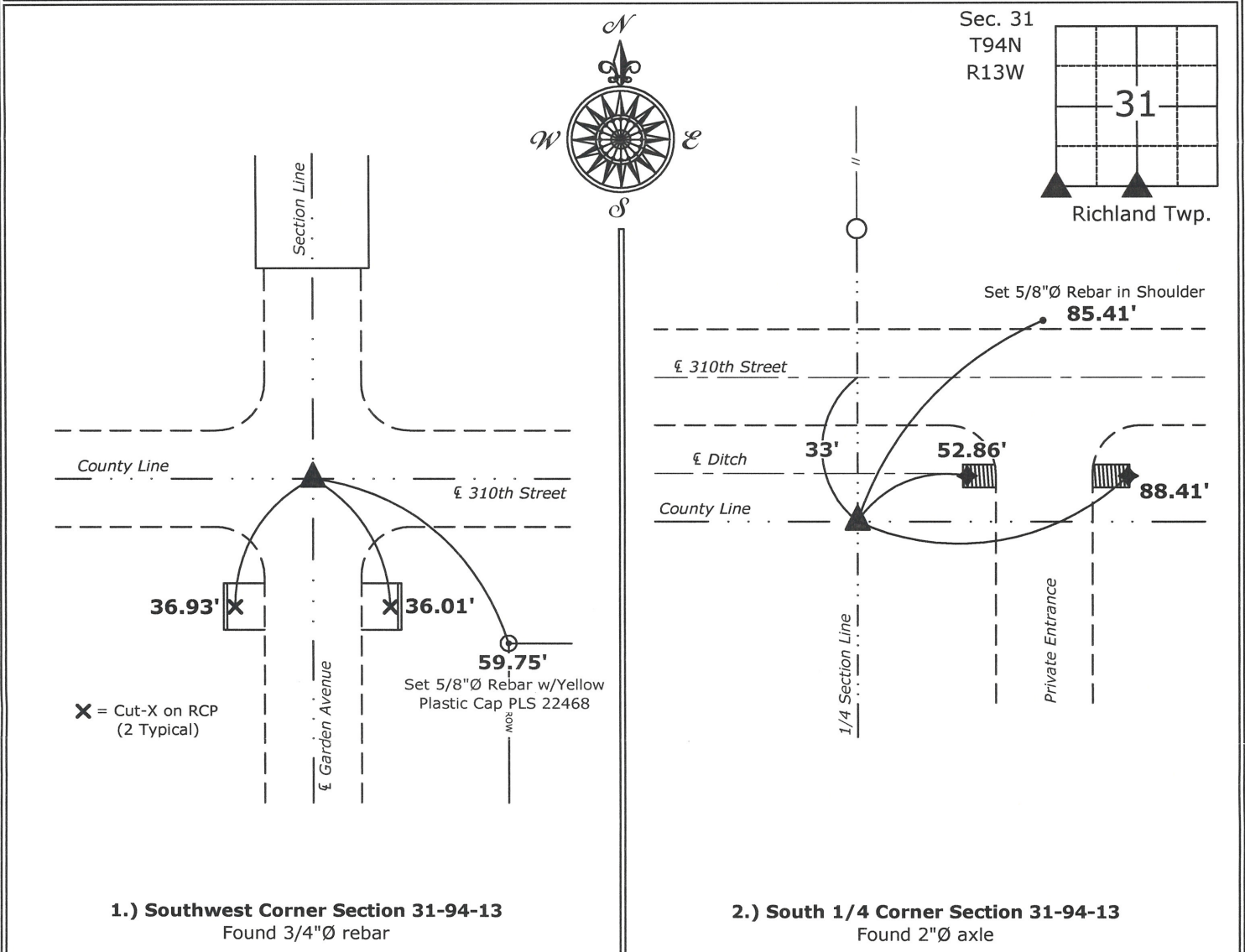
Monument Description and Remarks:

1.) Southwest Corner: Found 3/4"Ø rebar from information obtained from the Bremer County Engineers office, Waverly, Iowa.

2.) South 1/4 Corner: Found 2"Ø axle from information obtained from the Bremer County Engineers office, Waverly, Iowa.

PLAN - VIEW

(Show a minimum of three reference ties to durable physical objects, relevant monuments and physical conditions that will enable recovery of the corner.)



1.) Southwest Corner Section 31-94-13
Found 3/4"Ø rebar

2.) South 1/4 Corner Section 31-94-13
Found 2"Ø axle



I hereby certify that this land surveying document was prepared and the related survey work was performed by me or under my direct personal supervision and that I am a duly licensed Land Surveyor under the laws of the State of Iowa.

Isaiah M. Reicks 7-14-15
Isaiah M. Reicks Date:

License number 22468
My license renewal date is December 31, 2015.
Sheets covered by this seal: Individual sheet only

List Corners to be Indexed

Corners	Section	Twp.	Range
SW	31	94	13
S 1/4	31	94	13

Project Number: 2015-327

FB: Bremer 10, Pgs. 20-24

Section 36-94-13
 As referred to in
 Engr. Tic Book

FILED 2001-1806
 RECORDER'S OFFICE
 CHICKASAW COUNTY, IOWA

2001 AUG 22 AM 8 38

CINDY MESSERSMITH
 COUNTY RECORDER

TeKIPPE ENGINEERING, P.C., 128 South Vine Street, West Union, Iowa 52175 Phone (319) 422-5131

UNITED STATES PUBLIC LAND SURVEY CORNER CERTIFICATE

OF 36

Land Survey Monuments situated in Section 31, Township 94 North, Range 12 West of the Fifth Principal Meridian, CHICKASAW County, Iowa.
 Previously recorded in Book 174, Page 216 in County Recorder's Office.
 (book, page, document number, etc.)

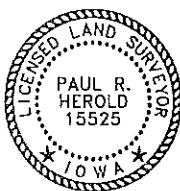
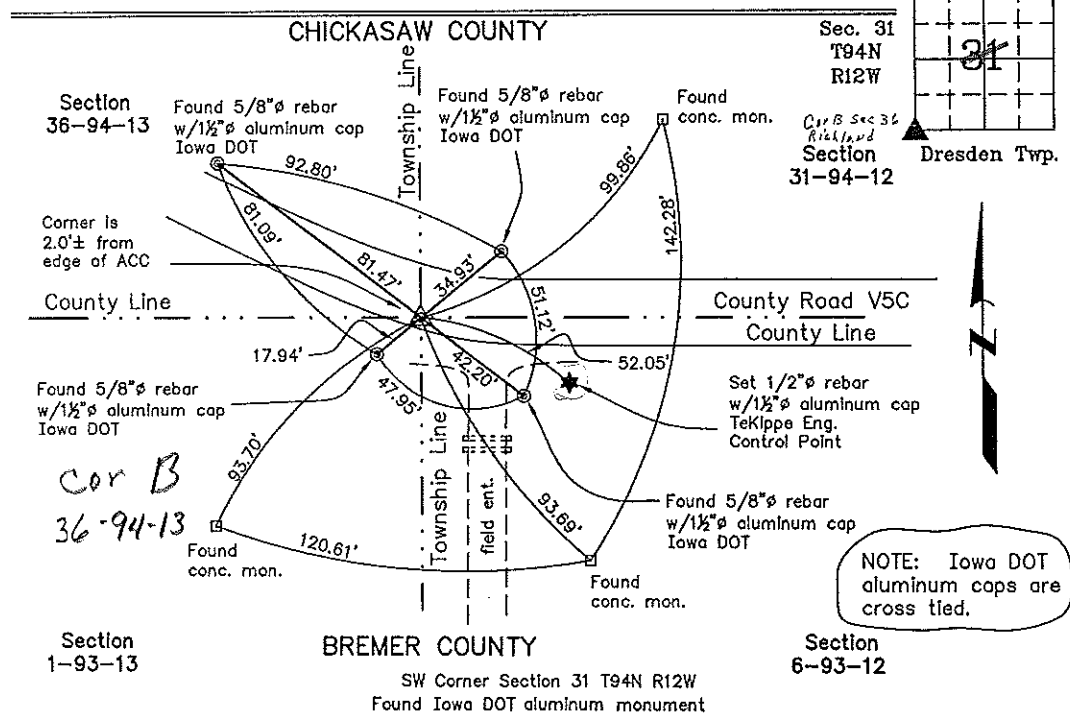
(Show reason for preparing this certificate, the evidence and detailed procedures used in establishing the corner positions and monumentation found or placed.)

Monument Description and Remarks: SW Corner Section 31 T94N R12W: Found Iowa DOT aluminum monument with information obtained from Iowa DOT as-built plans for Project F-63-8(10)--20-19. The previous Section Corner Certificate did not show the the reference ties established by the Iowa Department of Transportation.

PLAN - VIEW

Project Number 01058.1S
 FR NRCS PG. 68-74

(Show a minimum of three reference ties to durable physical objects, relevant monuments and physical conditions that will enable recovery of the corner.)



I hereby certify that this land surveying document was prepared and the related survey work was performed by me or under my direct personal supervision and that I am a duly licensed Land Surveyor under the laws of the State of Iowa.

Paul R. Herold 8-21-01
 Paul R. Herold Date
 License number 15525
 My license renewal date is December 31, 2002.
 Sheets covered by this seal: Individual

List Corners to be Indexed			
Corners	Section	Twp.	Range
SW	31	94N	12W

Filed 9-11-01

County Engineer's
 Copies