

Prepared by & Return to: Herold - Reicks Surveying, 2206 East Bremer Avenue, Waverly, IA 50677, Ph. 319-483-5187

## UNITED STATES PUBLIC LAND SURVEY CORNER CERTIFICATE

Land Survey Monuments situated in Section **31**, Township **94** North, Range **13** West of the Fifth Principal Meridian, **Chickasaw** County, Iowa. **1. and 2.)** Previously not recorded in the County Recorder's office.

This certificate is being prepared in compliance with Iowa Code Chapter 355.11 because:

- 1 & 2  There is no certificate on file for this corner.  
 There are no longer three valid ties of record.  
 There are changes to reference ties of record.  
 There is change of monumentation of record.  
 To clarify description of record monument (ties).

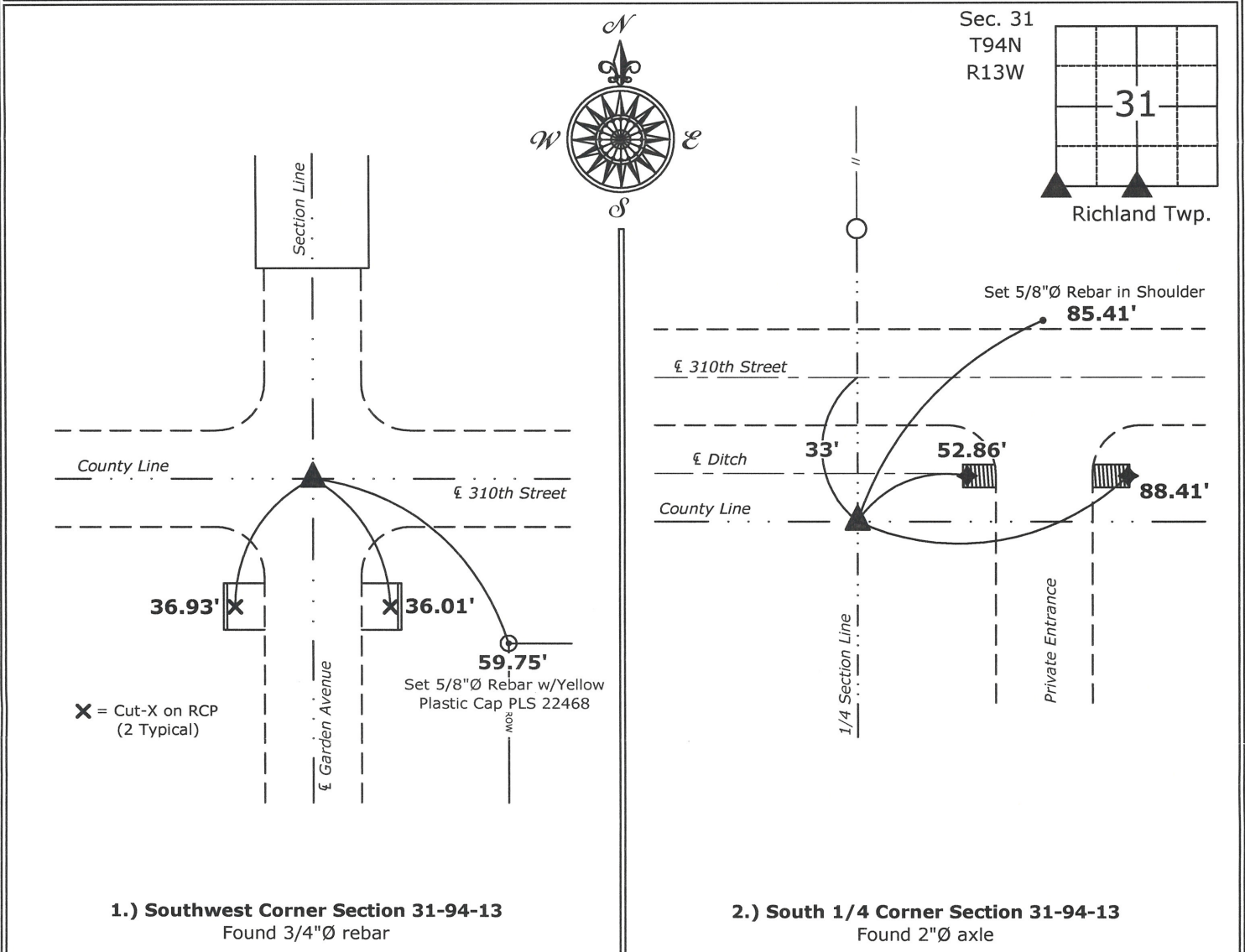
Monument Description and Remarks:

**1.) Southwest Corner:** Found 3/4"Ø rebar from information obtained from the Bremer County Engineers office, Waverly, Iowa.

**2.) South 1/4 Corner:** Found 2"Ø axle from information obtained from the Bremer County Engineers office, Waverly, Iowa.

### PLAN - VIEW

(Show a minimum of three reference ties to durable physical objects, relevant monuments and physical conditions that will enable recovery of the corner.)



**1.) Southwest Corner Section 31-94-13**  
Found 3/4"Ø rebar

**2.) South 1/4 Corner Section 31-94-13**  
Found 2"Ø axle



I hereby certify that this land surveying document was prepared and the related survey work was performed by me or under my direct personal supervision and that I am a duly licensed Land Surveyor under the laws of the State of Iowa.  
*Isaiah M. Reicks* 7-14-15  
 Isaiah M. Reicks Date:  
 License number 22468  
 My license renewal date is December 31, 2015.  
 Sheets covered by this seal: Individual sheet only

List Corners to be Indexed			
Corners	Section	Twp.	Range
SW	31	94	13
S 1/4	31	94	13

Project Number: 2015-327  
 FB: Bremer 10, Pgs. 20-24