

Prepared by & Return to: Herald - Reicks Surveying, 22031 East Chickasaw Avenue, Waverly, IA 503177, Ph. 319-483-5187

UNITED STATES PUBLIC LAND SURVEY CORNER CERTIFICATE

Land Survey Monuments situated in Section **31**, Township **94** North, Range **13** West of the Fifth Principal Meridian, **Chickasaw** County, Iowa. **1. and 2.)** Previously not recorded in the County Recorder's office.

This certificate is being prepared in compliance with Iowa Code Chapter 355.11 because:

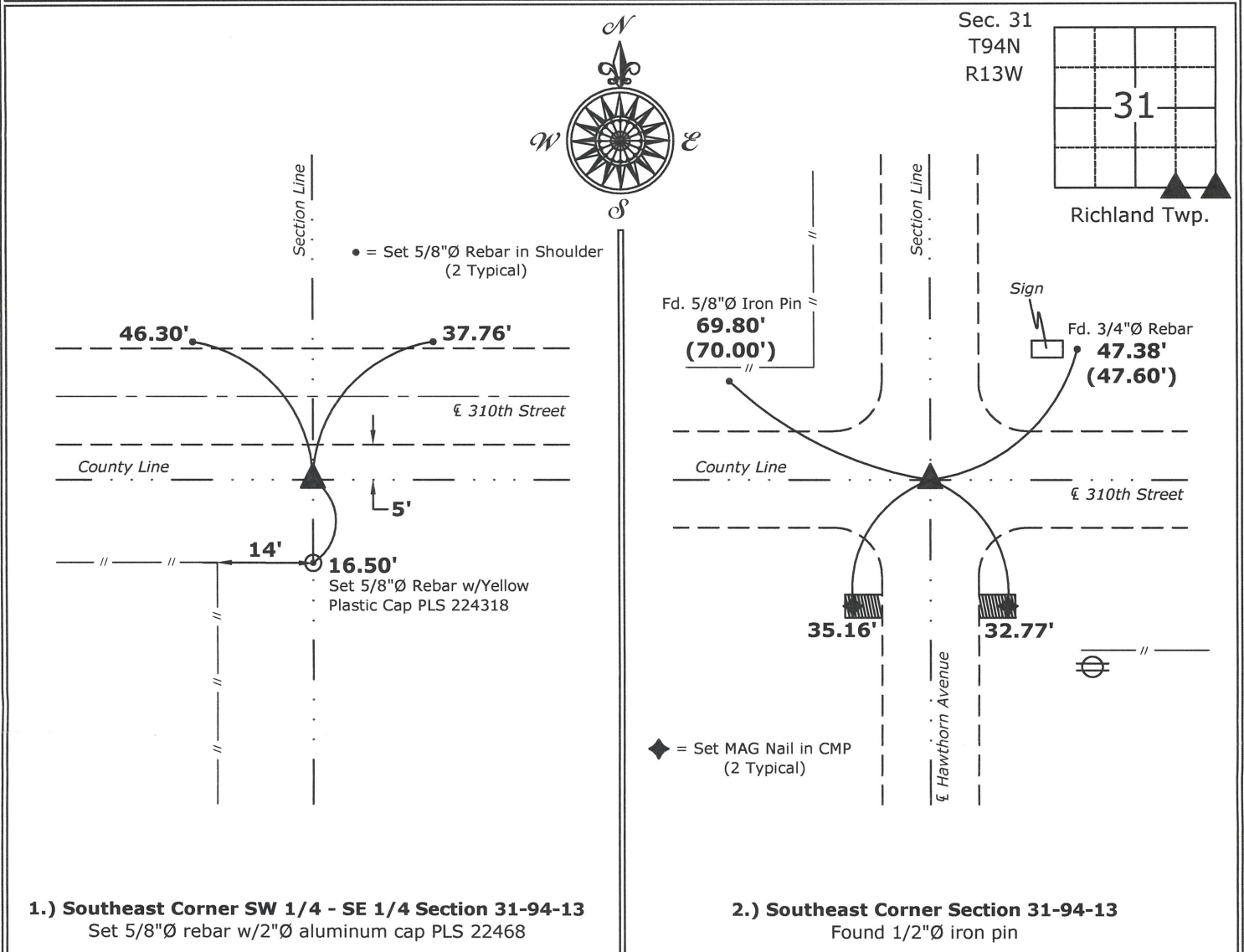
- 1 & 2 There is no certificate on file for this corner.
 There are no longer three valid ties of record.
 There are changes to reference ties of record.
 There is change of monumentation of record.
 To clarify description of record monument (ties).

Monument Description and Remarks:

- 1.) Southeast Corner SW 1/4 - SE 1/4:** Set 5/8"Ø rebar with 2"Ø aluminum cap PLS 22468 equidistant and online between the South 1/4 and Southeast Corners of Section 31.
- 2.) Southeast Corner:** Found 1/2"Ø iron pin from information obtained from a Plat of Survey, Document #1993-1648 & #2002-1301, on file in Bremer County Recorder's Office, Waverly, Iowa.

PLAN - VIEW

(Show a minimum of three reference ties to durable physical objects, relevant monuments and physical conditions that will enable recovery of the corner.)



I hereby certify that this land surveying document was prepared and the related survey work was performed by me or under my direct personal supervision and that I am a duly licensed Land Surveyor under the laws of the State of Iowa.

Isaiah M. Reicks 7-14-15
Isaiah M. Reicks Date:

License number 22468
My license renewal date is December 31, 2015.
Sheets covered by this seal: Individual sheet only

List Corners to be Indexed

Corners	Section	Twp.	Range
SE-SW-SE	31	94	13
SE	31	94	13

Project Number: 2015-327

FB: Bremer 10, Pgs. 20-24