

Chickasaw Co. Recorder  
 Cindy Messersmith  
 Fee Book 2015-1247  
 09/15/2015 @0335PM  
 SCC SEC COR CERT # Pages: 1  
 Book; Page: \$7.00  
 Total Fees:

Prepared by & Return to: Herold - Reicks Surveying, 10 East Main Street, New Hampton, IA 50659, Ph. 641-394-2725

**UNITED STATES PUBLIC LAND SURVEY CORNER CERTIFICATE**

Land Survey Monuments situated in Section 31, Township 95 North, Range 13 West of the Fifth Principal Meridian, Chickasaw County, Iowa. 1., 2.) Not previously recorded in the County Recorder's office.

This certificate is being prepared in compliance with Iowa Code Chapter 355.11 because:

- 1 & 2  There is no certificate on file for this corner.  
 There are no longer three valid ties of record.  
 There are changes to reference ties of record.  
 There is change of monumentation of record.  
 To clarify description of record monument (ties).

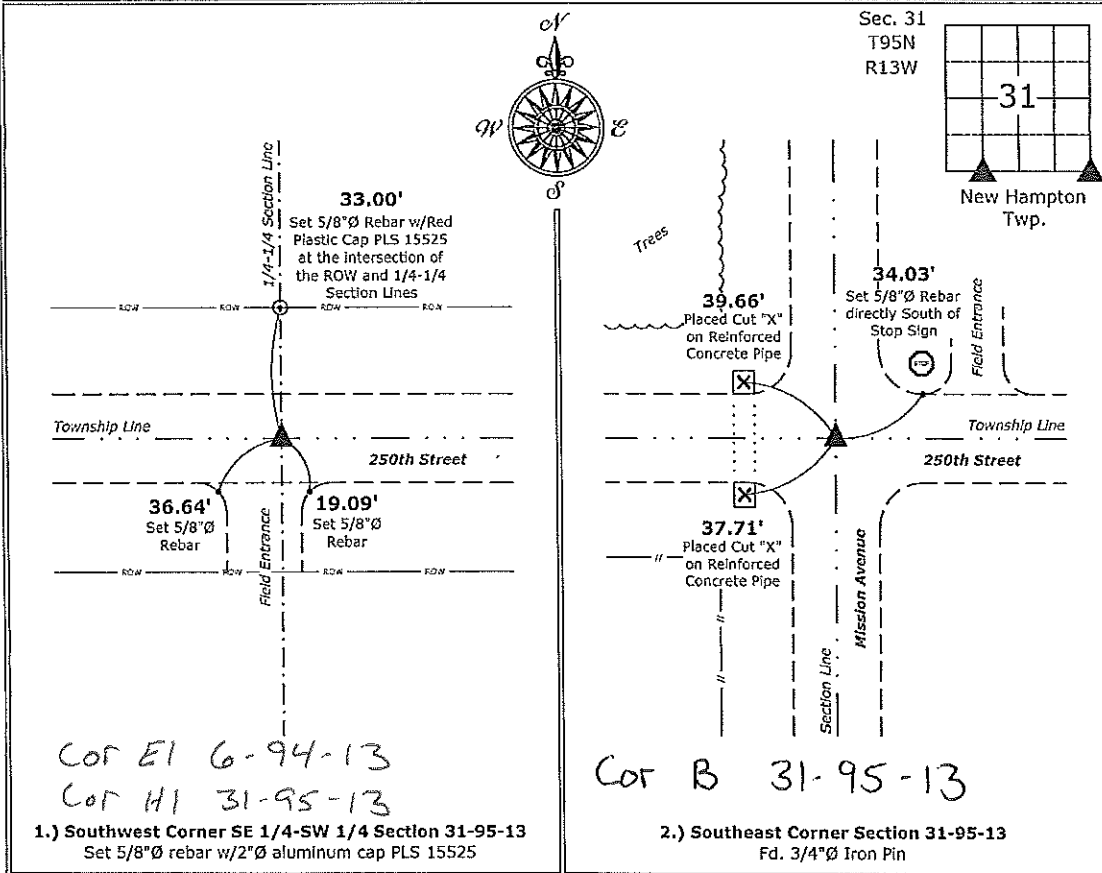
**Monument Description and Remarks:**

**1.) Southwest Corner SE 1/4-SW 1/4;** Set 5/8"Ø rebar w/2"Ø aluminum cap PLS 15525 by the single proportionate method on line between the South 1/4 and Southwest Corners of Section 31 utilizing recorded distances as shown on a Survey and Plat made by G.W. Cotant, signed June 22, 1889, in Range Book 11-12, Section 31-95-12, Pages 217-218, and Field Notes & Certificates, Page 137, on file in the Chickasaw County Recorder's office, New Hampton, Iowa.

**2.) Southeast Corner:** Fd. 3/4"Ø Iron Pin with information obtained in the County Engineer's office in Corner Tie Book New Hampton Township, Section 31, Corner B.

**PLAN - VIEW**

(Show a minimum of three reference ties to durable physical objects, relevant monuments and physical conditions that will enable recovery of the corner.)



I hereby certify that this land surveying document was prepared and the related survey work was performed by me or under my direct personal supervision and that I am a duly licensed Land Surveyor under the laws of the State of Iowa.

*Paul R. Herold 9-15-15*  
 Paul R. Herold Date:  
 License number 15525  
 My license renewal date is December 31, 2016.  
 Sheets covered by this seal: Individual sheet only

List Corners to be Indexed			
Corners	Section	Twp.	Range
SW-SE-SW	31	95	13
SE	31	95	13

Project Number: 2015-122  
 FB: Chickasaw County 7, Pgs. 40-41

File: S:\C3D Projects\County Control Systems\CHICKASAW\CHICK-28 (New Hampton)\CHICK-28.dwg, 9/15/2015 2:57:08 PM

Prepared by & Return to: Herald - Reicks Surveying, 22031 East Chickasaw Avenue, Waverly, IA 503177, Ph. 319-483-5187

### UNITED STATES PUBLIC LAND SURVEY CORNER CERTIFICATE

Land Survey Monuments situated in Section **31**, Township **94** North, Range **13** West of the Fifth Principal Meridian, **Chickasaw** County, Iowa. **1. and 2.)** Previously not recorded in the County Recorder's office.

This certificate is being prepared in compliance with Iowa Code Chapter 355.11 because:

- 1 & 2  There is no certificate on file for this corner.  
 There are no longer three valid ties of record.  
 There are changes to reference ties of record.  
 There is change of monumentation of record.  
 To clarify description of record monument (ties).

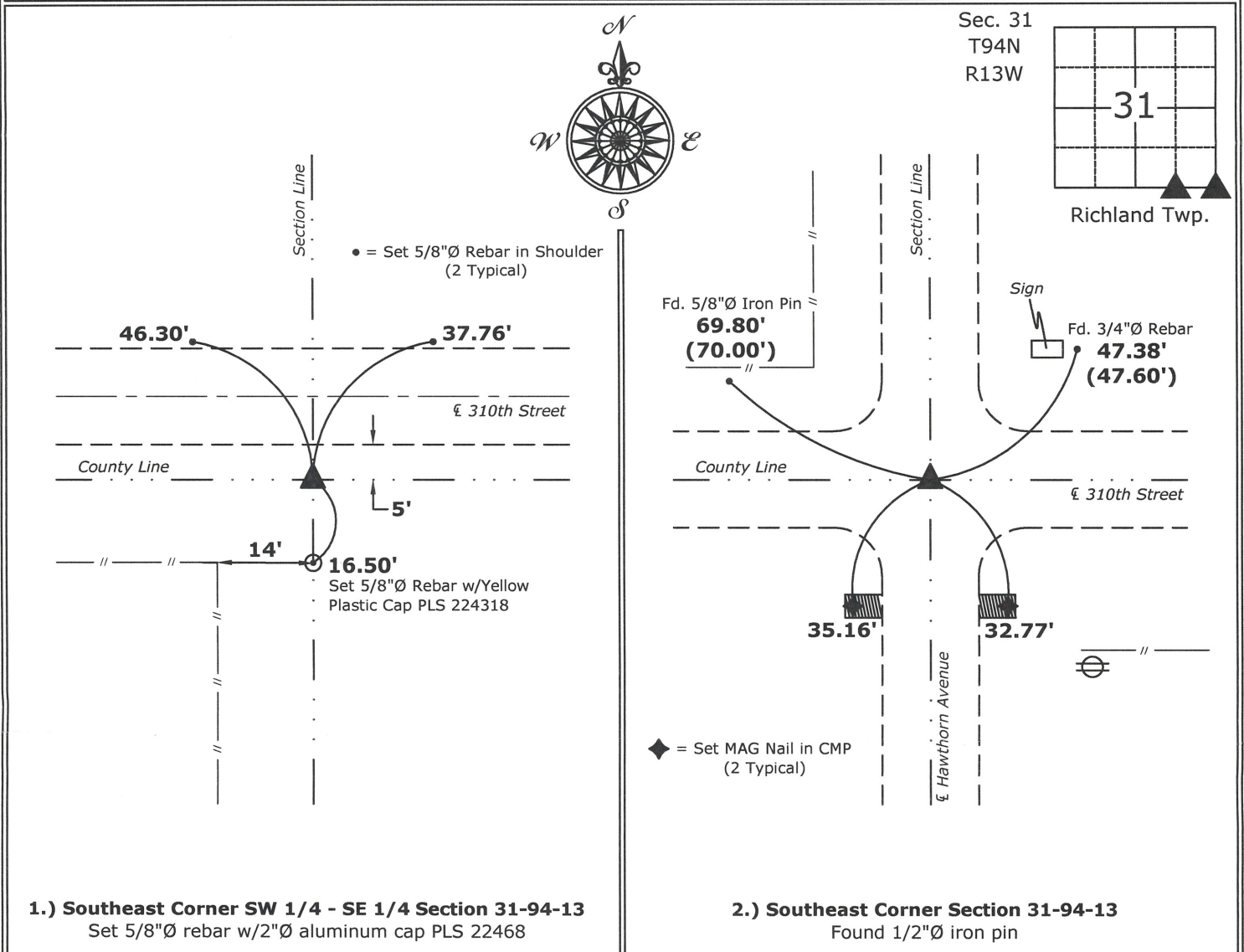
Monument Description and Remarks:

**1.) Southeast Corner SW 1/4 - SE 1/4:** Set 5/8"Ø rebar with 2"Ø aluminum cap PLS 22468 equidistant and online between the South 1/4 and Southeast Corners of Section 31.

**2.) Southeast Corner:** Found 1/2"Ø iron pin from information obtained from a Plat of Survey, Document #1993-1648 & #2002-1301, on file in Bremer County Recorder's Office, Waverly, Iowa.

### PLAN - VIEW

(Show a minimum of three reference ties to durable physical objects, relevant monuments and physical conditions that will enable recovery of the corner.)



I hereby certify that this land surveying document was prepared and the related survey work was performed by me or under my direct personal supervision and that I am a duly licensed Land Surveyor under the laws of the State of Iowa.

*Isaiah M. Reicks 7-14-15*  
Isaiah M. Reicks Date:

License number 22468  
My license renewal date is December 31, 2015.  
Sheets covered by this seal: Individual sheet only

#### List Corners to be Indexed

Corners	Section	Twp.	Range
SE-SW-SE	31	94	13
SE	31	94	13

Project Number: 2015-327

FB: Bremer 10, Pgs. 20-24