

2005 AUG 01 AM 9 22

CINDY MESSERSMITH  
 COUNTY RECORDER

TeKIPPE ENGINEERING, P.C., 128 South Vine Street, West Union, Iowa 52175 Phone (563) 422-5131

UNITED STATES PUBLIC LAND SURVEY CORNER CERTIFICATE

OF

Land Survey Monuments situated in Section 32, Township 94 North, Range 13 West of the Fifth Principal Meridian, CHICKASAW County, Iowa. Previously recorded in none in County Recorder's Office. (book, page, document number, etc.)

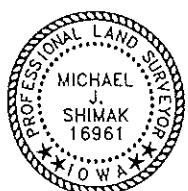
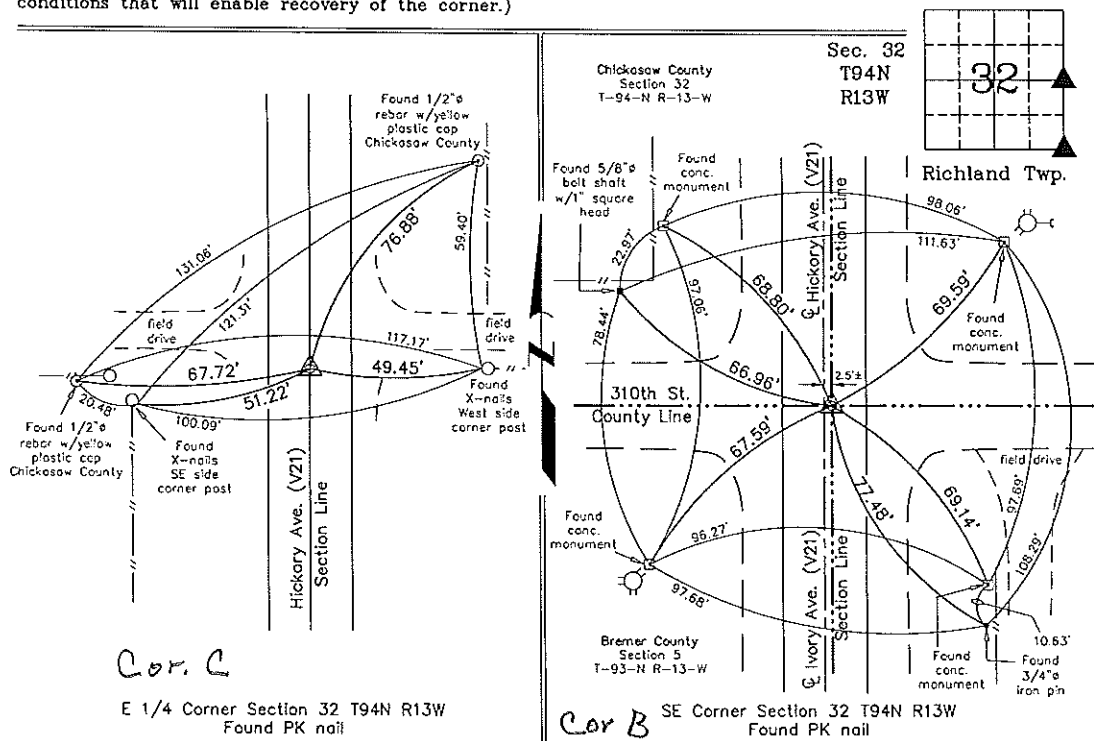
(Show reason for preparing this certificate, the evidence and detailed procedures used in establishing the corner positions and monumentation found or placed.)

Monument Description and Remarks: E 1/4 CORNER SECTION 32 T94N R13W: Found PK nail with information obtained from the Chickasaw County Engineer's Office in Field Book Richland Twp. Corner Ties, Corner 'B'.

SE CORNER SECTION 32 T94N R13W: Found PK nail with information obtained from the Chickasaw County Engineer's Office in Field Book Richland Twp. Corner Ties, Corner 'C'.

PLAN - VIEW

(Show a minimum of three reference ties to durable physical objects, relevant monuments and physical conditions that will enable recovery of the corner.)



I hereby certify that this land surveying document was prepared and the related survey work was performed by me or under my direct personal supervision and that I am a duly licensed Land Surveyor under the laws of the State of Iowa.  
 Michael J. Shimak July 28, 2005  
 Michael J. Shimak Date  
 License number 16961  
 My license renewal date is December 31, 2005.  
 Sheets covered by this seal: Individual

List Corners to be Indexed			
Corners	Section	Twp.	Range
E 1/4	32	94N	13W
SE	32	94N	13W

Project Number 05154.1S  
 FB. 46L PG. 45-46  
 X:\Section Corners\Sec. 32\32-94-13cy.dwg