

Instr. Number: 2020-2350  
 Recorded: 10/19/2020 at 10:03:04.0 AM  
 Pages 1  
 County Recording Fee: \$7.00  
 Iowa E-Filing Fee: \$3.00  
 Combined Fee: \$10.00  
 Revenue Tax:  
 Shirley Troyna RECORDER  
 Chickasaw County, Iowa

Prepared by & Return to: Herold - Reicks Surveying, 2206 East Bremer Avenue, Waverly, IA 50677, Ph. 319-483-5187

### United States Public Land Survey Corner Certificate

Land Survey Monument situated in  
 Section 33, Township 94 North, Range 13 West of the Fifth Principal Meridian, Chickasaw County, Iowa.  
 On file in Document #2005-1605 in the County Recorder's office.

This certificate is being prepared in compliance with Iowa Code Chapter 355.11 because:

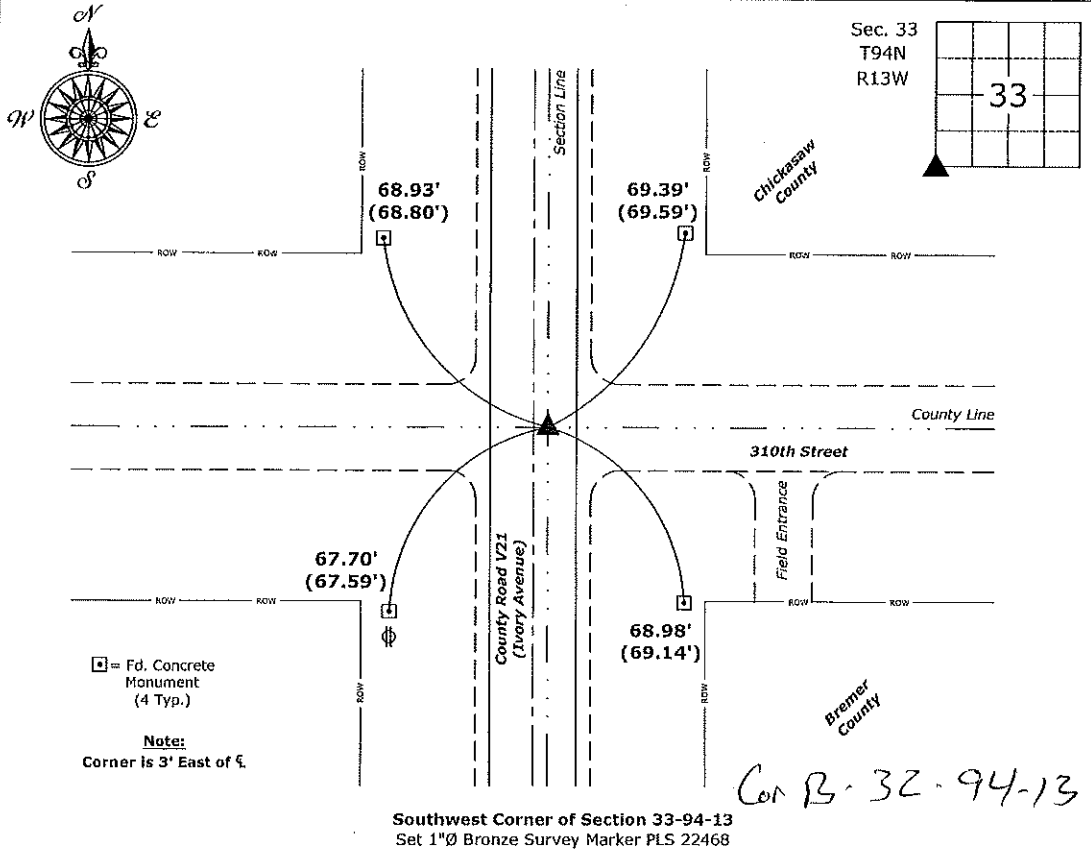
- There is no certificate on file for this corner.
- There are no longer three valid ties of record.
- There are changes to reference ties of record.
- There is change of monumentation of record.
- To clarify description of record monument (ties).

#### Monument Description and Remarks:

**Southwest Corner:** Found PK Nail with information obtained from the previously recorded Section Corner Certificate. Set 1"Ø Bronze Survey Marker PLS 22468 with coordinates of the found location obtained prior to highway reconstruction. Corner reset in conjunction with Project No. FM-C009(83)--55-09, (Bremer County Project).

#### Plan View

(Show a minimum of three reference ties to durable physical objects, relevant monuments and physical conditions that will enable recovery of the corner.)



Southwest Corner of Section 33-94-13  
 Set 1"Ø Bronze Survey Marker PLS 22468

*Cor B-32-94-13*



I hereby certify that this land surveying document was prepared and the related survey work was performed by me or under my direct personal supervision and that I am a duly licensed Land Surveyor under the laws of the State of Iowa.  
*Isaiah M. Reicks 10-16-20*  
 Isaiah M. Reicks Date:  
 License number 22468  
 My license renewal date is December 31, 2021.  
 Sheets covered by this seal: Individual sheet only

List Corner to be Indexed			
Corner	Section	Twp.	Range
SW	33	94	13
Project Number: 2020-800			
FB: Bremer-13, Pg. 76			

File: I:\Projects - WO\County Control Systems\WO\BREMER\BREMER-2\BREMER-2.dwg, 10/16/2020 10:58:39 AM

2005 AUG 01 AM 9 22

CINDY MESSERSMITH  
 COUNTY RECORDER

TeKIPPE ENGINEERING, P.C., 128 South Vine Street, West Union, Iowa 52175 Phone (563) 422-5131

UNITED STATES PUBLIC LAND SURVEY CORNER CERTIFICATE

OF

Land Survey Monuments situated in Section 32, Township 94 North, Range 13 West of the Fifth Principal Meridian, CHICKASAW County, Iowa. Previously recorded in none in County Recorder's Office. (book, page, document number, etc.)

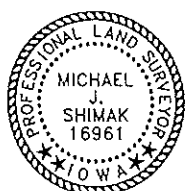
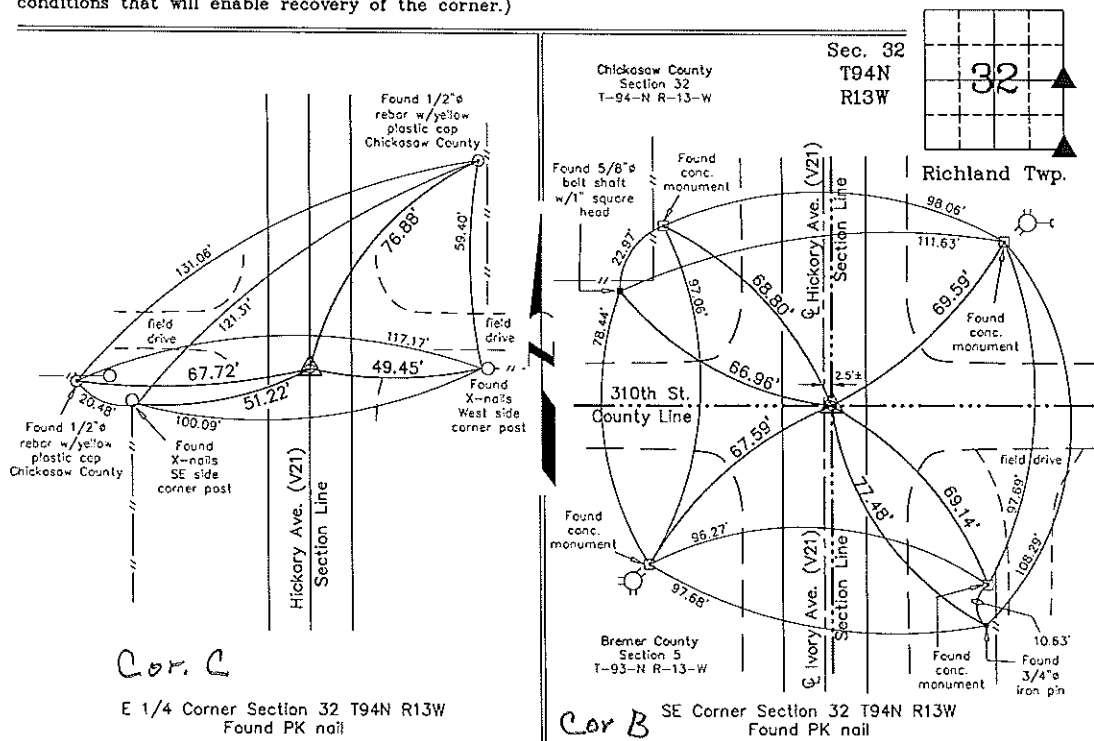
(Show reason for preparing this certificate, the evidence and detailed procedures used in establishing the corner positions and monumentation found or placed.)

Monument Description and Remarks: E 1/4 CORNER SECTION 32 T94N R13W: Found PK nail with information obtained from the Chickasaw County Engineer's Office in Field Book Richland Twp. Corner Ties, Corner 'B'.

SE CORNER SECTION 32 T94N R13W: Found PK nail with information obtained from the Chickasaw County Engineer's Office in Field Book Richland Twp. Corner Ties, Corner 'C'.

PLAN - VIEW

(Show a minimum of three reference ties to durable physical objects, relevant monuments and physical conditions that will enable recovery of the corner.)



I hereby certify that this land surveying document was prepared and the related survey work was performed by me or under my direct personal supervision and that I am a duly licensed Land Surveyor under the laws of the State of Iowa.

*Michael J. Shimak* July 28, 2005  
 Michael J. Shimak Date

License number 16961  
 My license renewal date is December 31, 2005.  
 Sheets covered by this seal: Individual

List Corners to be Indexed			
Corners	Section	Twp.	Range
E 1/4	32	94N	13W
SE	32	94N	13W

Project Number 05154.1S  
 FB. 46L PG. 45-46  
 X:\Section Corners\Sec. 32\32-94-13cy.dwg