

Prepared by & Return to: Herold - Reicks Surveying, 10 East Main Street, New Hampton, IA 50659, Ph. 641-394-2725

UNITED STATES PUBLIC LAND SURVEY CORNER CERTIFICATE

Land Survey Monuments situated in Section 28, Township 94 North, Range 12 West of the Fifth Principal Meridian, Chickasaw County, Iowa. 1., 2.) Not Previously recorded in the County Recorder's Office.

This certificate is being prepared in compliance with Iowa Code Chapter 355.11 because:

- 1 & 2 There is no certificate on file for this corner.
- There are no longer three valid ties of record.
- There are changes to reference ties of record.
- There is change of monumentation of record.
- To clarify description of record monument (ties).

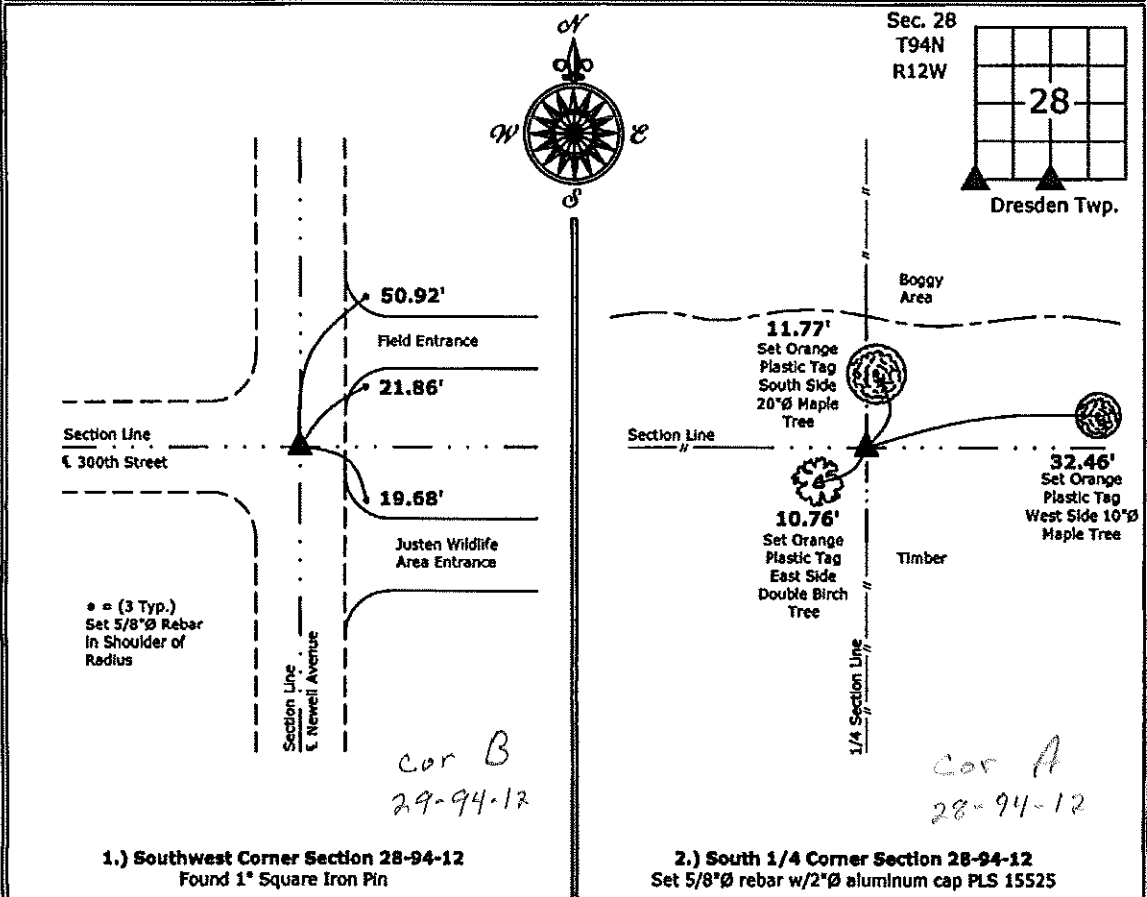
Monument Description and Remarks:

1.) **Southwest Corner:** Found 1" Square Iron Pin from information obtained from the County Engineer's office in Field Book Dresden Twp. Corner Ties, Section 29, Corner "B".

2.) **South 1/4 Corner:** Set 5/8"Ø rebar w/2"Ø aluminum cap PLS 15525 on the extension from the Southwest Corner through existing fence that indicated the centerline of the vacated road and intersected existing fence that ran North and South then compared distances to adjacent corners and accepted position as the Quarter Corner.

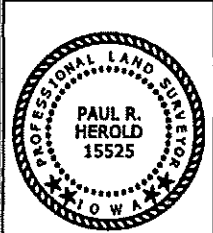
PLAN - VIEW

(Show a minimum of three reference ties to durable physical objects, relevant monuments and physical conditions that will enable recovery of the corner.)



1.) **Southwest Corner Section 28-94-12**
 Found 1" Square Iron Pin

2.) **South 1/4 Corner Section 28-94-12**
 Set 5/8"Ø rebar w/2"Ø aluminum cap PLS 15525



I hereby certify that this land surveying document was prepared and the related survey work was performed by me or under my direct personal supervision and that I am a duly licensed Land Surveyor under the laws of the State of Iowa.

Paul R. Herold 1-2-13
 Paul R. Herold Date:
 License number 15525
 My license renewal date is December 31, 2014.
 Sheets covered by this seal: Individual sheet only

| List Corners to be Indexed | | | |
|----------------------------|---------|------|-------|
| Corners | Section | Twp. | Range |
| SW | 28 | 94 | 12 |
| S 1/4 | 28 | 94 | 12 |

Project Number: 2012-217
 FB: Chickasaw County 5, Pgs. 12-15