

STEVE BUSSE P.O. BOX 241 508 ELM ST. ALLISON, IOWA 50602 319-267-2519

UNITED STATES PUBLIC LAND SURVEY CORNER CERTIFICATE OF

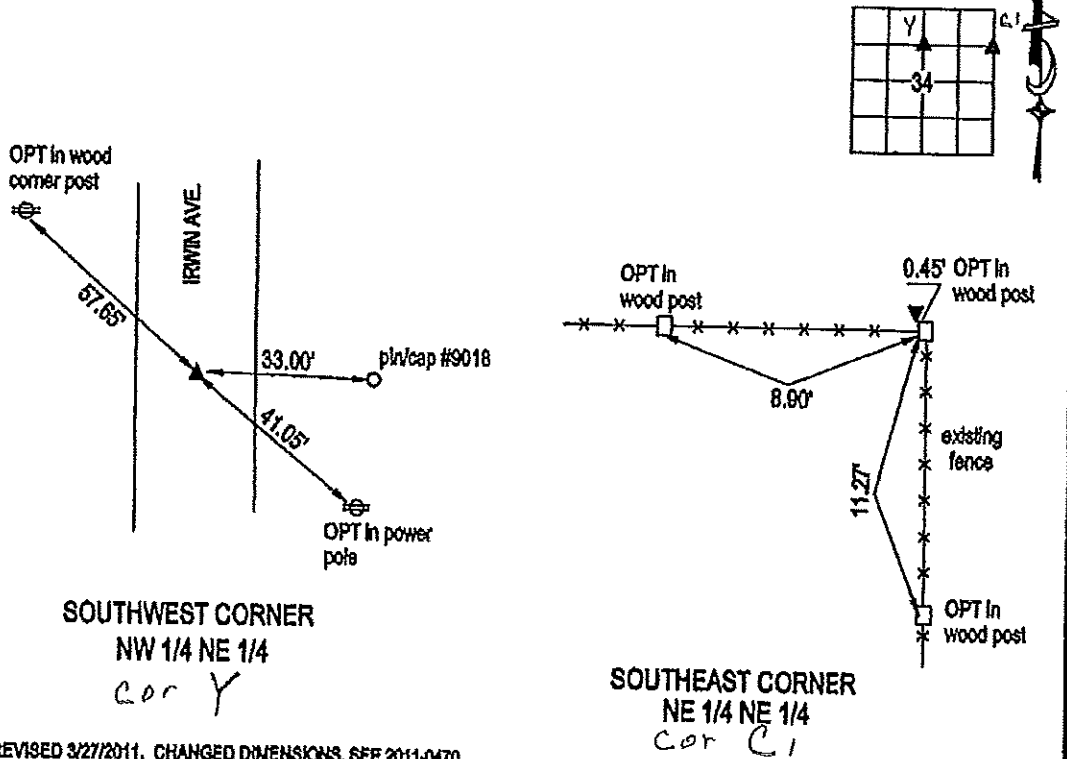
LAND SURVEY MONUMENTS SITUATED IN SECTION NO. 34, TOWNSHIP NO. 84 NORTH, RANGE NO. 13 WEST OF THE FIFTH PRINCIPAL MERIDIAN, CHICKASAW COUNTY, IOWA.
 PREVIOUSLY RECORDED IN N/A

(SHOW REASON FOR PREPARING THIS CERTIFICATE, THE EVIDENCE AND DETAILED PROCEDURES USED IN ESTABLISHING THE CORNER POSITIONS AND MONUMENTATION FOUND OR PLACED.)
 MONUMENT DESCRIPTION AND REMARKS:

There are no recorded certificates for either corner. County does not show monumentation at either corner. At Southwest corner of Northwest 1/4 of Northeast 1/4 set pin with cap on line and at midpoint of line between North 1/4 and Center of section. At Southeast corner of Northeast 1/4 of Northeast 1/4 set pin with cap on line and at midpoint of line between Northeast corner and East 1/4 corner of section 34.

PLAN VIEW

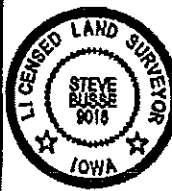
(SHOW A MINIMUM OF THREE REFERENCE TIES TO DURABLE PHYSICAL OBJECTS, RELEVANT MONUMENTS AND PHYSICAL CONDITIONS THAT WILL ENABLE RECOVERY OF THE CORNER.)



SOUTHWEST CORNER
 NW 1/4 NE 1/4
 cor Y

SOUTHEAST CORNER
 NE 1/4 NE 1/4
 cor C1

REVISED 3/27/2011. CHANGED DIMENSIONS. SEE 2011-0470



I HEREBY CERTIFY THAT THIS LAND SURVEYING DOCUMENT WAS PREPARED AND THE RELATED SURVEY WORK WAS PERFORMED BY ME OR UNDER MY DIRECT PERSONAL SUPERVISION AND THAT I AM A DULY LICENSED LAND SURVEYOR UNDER THE LAWS OF THE STATE OF IOWA.

Steve Busse
 STEVE BUSSE
 LICENSE NUMBER 9019
 MY LICENSE RENEWAL DATE IS DECEMBER 31, 2012
 PAGES OR SHEETS COVERED BY THIS SEAL 1

G.P. = 2" GAS PIPE
 CONC MONU = CONCRETE MONUMENT W/ PIN & ALUM CAP
 "X NAILS" = CROSS NAILS IN WOOD POST
 OPT = PLASTIC TAG (O=ORANGE, Y=YELLOW)
 (00) RECORDED AS

LIST CORNERS TO BE INDEXED			
CORNER	SECTION	TOWNSHIP	RANGE
SW COR. NW OF NE	34	84	13
SE COR. NE OF NE	34	84	13

Chickasaw Co. Recorder
 Cindy Messersmith
Fee Book 2011-0470
 03/24/2011 @0849AM
 SEC COR CERT # Pages: 1
 Book: Page: \$9.00
 Total Fees:

STEVE BUSSE P.O. BOX 241 508 ELM ST. ALLISON, IOWA 50602 319-267-2519

**UNITED STATES PUBLIC LAND SURVEY CORNER CERTIFICATE
 OF**

LAND SURVEY MONUMENTS SITUATED IN SECTION NO. 34, TOWNSHIP NO. 94 NORTH, RANGE
 NO. 13 WEST OF THE FIFTH PRINCIPAL MERIDIAN, CHICKASAW COUNTY, IOWA.
 PREVIOUSLY RECORDED IN N/A

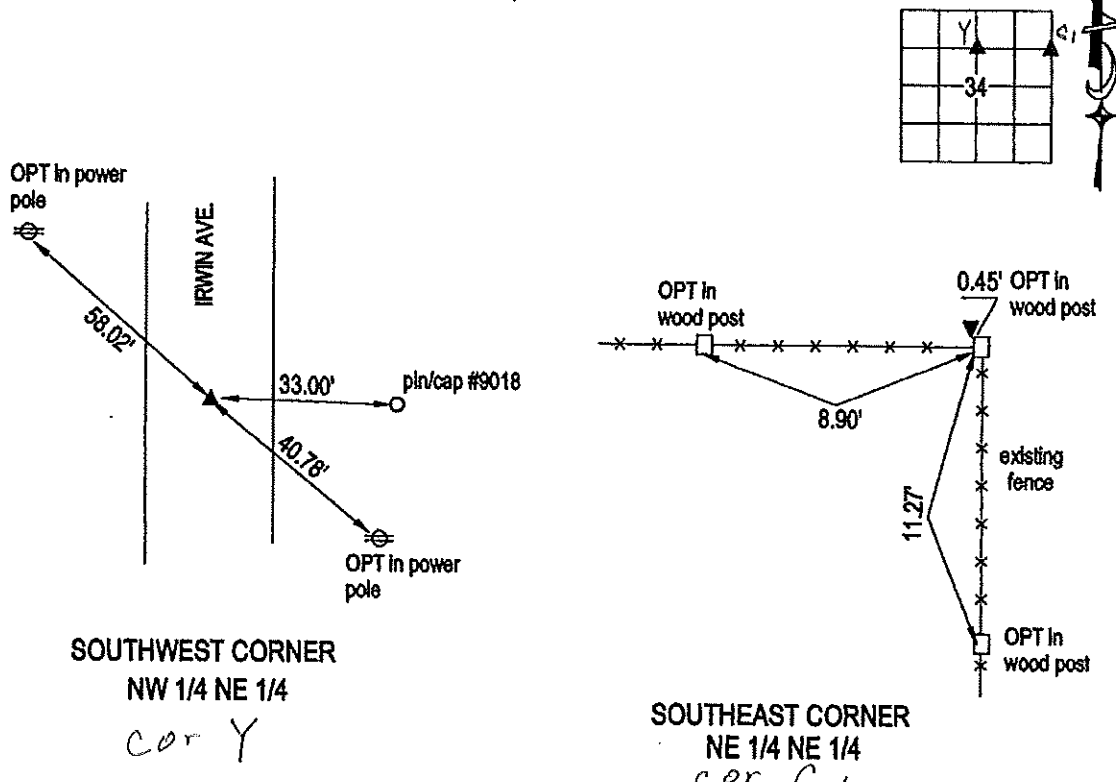
(SHOW REASON FOR PREPARING THIS CERTIFICATE, THE EVIDENCE AND DETAILED PROCEDURES USED IN ESTABLISHING THE
 CORNER POSITIONS AND MONUMENTATION FOUND OR PLACED.)

MONUMENT DESCRIPTION AND REMARKS:

There are no recorded certificates for either corner. County does not show monumentation at either corner. At Southwest corner of Northwest 1/4 of Northeast 1/4 set pin with cap an line and at midpoint of line between North 1/4 and Center of section. At Southeast corner of Northeast 1/4 of Northeast 1/4 set pin with cap on line and at midpoint of line between Northeast corner and East 1/4 corner of section 34.

PLAN VIEW

(SHOW A MINIMUM OF THREE REFERENCE TIES TO DURABLE PHYSICAL OBJECTS, RELEVANT MONUMENTS AND PHYSICAL
 CONDITIONS THAT WILL ENABLE RECOVERY OF THE CORNER.)



SOUTHWEST CORNER
 NW 1/4 NE 1/4
 cor Y

SOUTHEAST CORNER
 NE 1/4 NE 1/4
 cor C1



I HEREBY CERTIFY THAT THIS LAND SURVEYING DOCUMENT
 WAS PREPARED AND THE RELATED SURVEY WORK WAS
 PERFORMED BY ME OR UNDER MY DIRECT PERSONAL
 SUPERVISION AND THAT I AM A DULY LICENSED LAND
 SURVEYOR UNDER THE LAWS OF THE STATE OF IOWA.

Steve Busse 3/18/11
 STEVE BUSSE DATE

LICENSE NUMBER 9018
 MY LICENSE RENEWAL DATE IS DECEMBER 31, 2012
 PAGES OR SHEETS COVERED BY THIS SEAL 1

G.P. = 2" GAS PIPE
 CONG MONU = CONCRETE MONUMENT W/ PIN & ALUM CAP
 "X NAILS" = CROSS NAILS IN WOOD POST
 OPT = PLASTIC TAG (O=ORANGE, Y=YELLOW)
 (00) RECORDED AS

LIST CORNERS TO BE INDEXED			
CORNER	SECTION	TOWNSHIP	RANGE
SW COR. NW OF NE	34	94	13
SE COR. NE OF NE	34	94	13