

STEVE BUSSE P.O. BOX 241 508 ELM ST. ALLISON, IOWA 50602 318-267-2519

UNITED STATES PUBLIC LAND SURVEY CORNER CERTIFICATE OF

LAND SURVEY MONUMENTS SITUATED IN SECTION NO. 34, TOWNSHIP NO. 84 NORTH, RANGE
 NO. 13 WEST OF THE FIFTH PRINCIPAL MERIDIAN, CHICKASAW COUNTY, IOWA.
 PREVIOUSLY RECORDED IN N/A

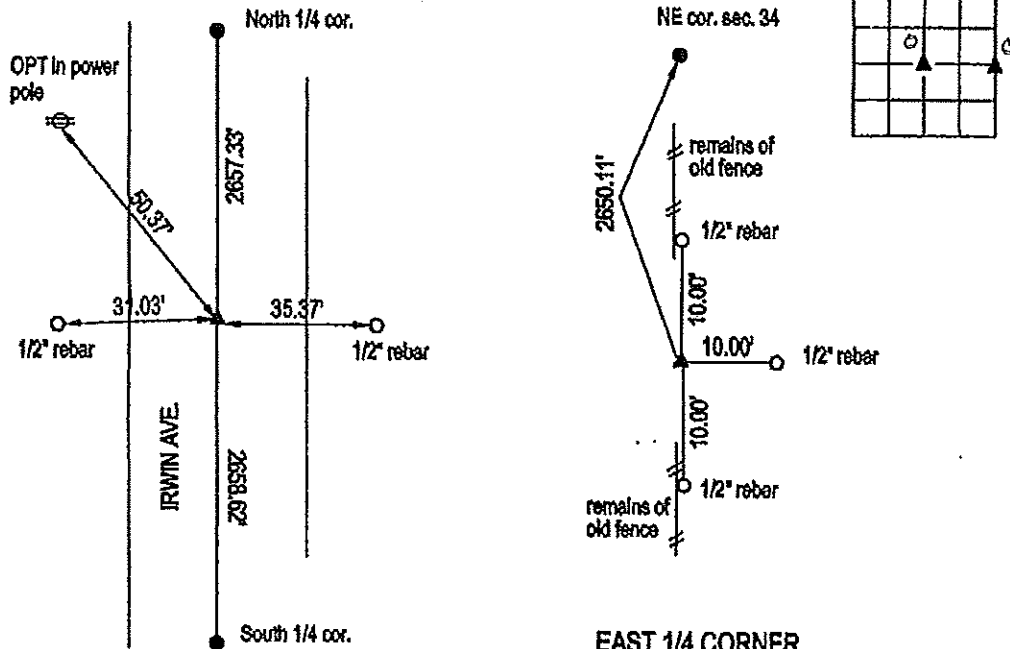
(SHOW REASON FOR PREPARING THIS CERTIFICATE, THE EVIDENCE AND DETAILED PROCEDURES USED IN ESTABLISHING THE
 CORNER POSITIONS AND MONUMENTATION FOUND OR PLACED.)

MONUMENT DESCRIPTION AND REMARKS:

Found no certificate recorded for either corner. At Center of section searched at approximate location with locator but found nothing. County did not have ties for this corner or list monumentation for corner Set pin with cap on line between north 1/4 and south 1/4 and at prorated dimension between the two corners as shown on County tie sheet. Survey in section 35 recorded as document 2002-0542 shows corner set at West 1/4 corner of section 35. Searched area at distance shown from northwest corner and at fence line but found nothing. We then computed location for corner using bearings and distances shown on plat. This came to area where fence line had been cleared. Checked again with locator but found nothing. Then dug at location and found nothing. Believed pin may have been removed when fence line was cleared, Set 1/2" rebar with cap at calculated position.

PLAN VIEW

(SHOW A MINIMUM OF THREE REFERENCE TIES TO DURABLE PHYSICAL OBJECTS, RELEVANT MONUMENTS AND PHYSICAL
 CONDITIONS THAT WILL ENABLE RECOVERY OF THE CORNER.)



CENTER SECTION
Cor O

EAST 1/4 CORNER
Cor C

REVISED 3/17/2011. CHANGED DIMENSIONS. SEE 2011-0471



I HEREBY CERTIFY THAT THIS LAND SURVEYING DOCUMENT
 WAS PREPARED AND THE RELATED SURVEY WORK WAS
 PERFORMED BY ME OR UNDER MY DIRECT PERSONAL
 SUPERVISION AND THAT I AM A DULY LICENSED LAND
 SURVEYOR UNDER THE LAWS OF THE STATE OF IOWA.

Steve Busse 3/21/2011
 STEVE BUSSE DATE
 LICENSE NUMBER 9018
 MY LICENSE RENEWAL DATE IS DECEMBER 31, 2012
 PAGES OR SHEETS COVERED BY THIS SEAL 1

G.P. = 2" GAS PIPE
 CONC MONU = CONCRETE MONUMENT W/ PIN & ALUM CAP
 "X NAILS" = CROSS NAILS IN WOOD POST
 OPT = PLASTIC TAG (O=ORANGE, Y=YELLOW)
 (00) RECORDED AS

CORNER	LIST CORNERS TO BE INDEXED		
	SECTION	TOWNSHIP	RANGE
CENTER	34	84	13
EAST 1/4 COR.	34	84	13

Chickasaw Co. Recorder
 Cindy Messersmith
 Fee Book 2011-0471
 03/24/2011 @ 08:58 AM
 SEC COR CERT
 Book Page: # Pages: 1
 Total Fees: \$9.00

STEVE BUSSE P.O. BOX 241 508 ELM ST. ALLISON, IOWA 50602 319-267-2519

**UNITED STATES PUBLIC LAND SURVEY CORNER CERTIFICATE
 OF**

LAND SURVEY MONUMENTS SITUATED IN SECTION NO. 34, TOWNSHIP NO. 94 NORTH, RANGE
 NO. 13 WEST OF THE FIFTH PRINCIPAL MERIDIAN, CHICKASAW COUNTY, IOWA.
 PREVIOUSLY RECORDED IN N/A.

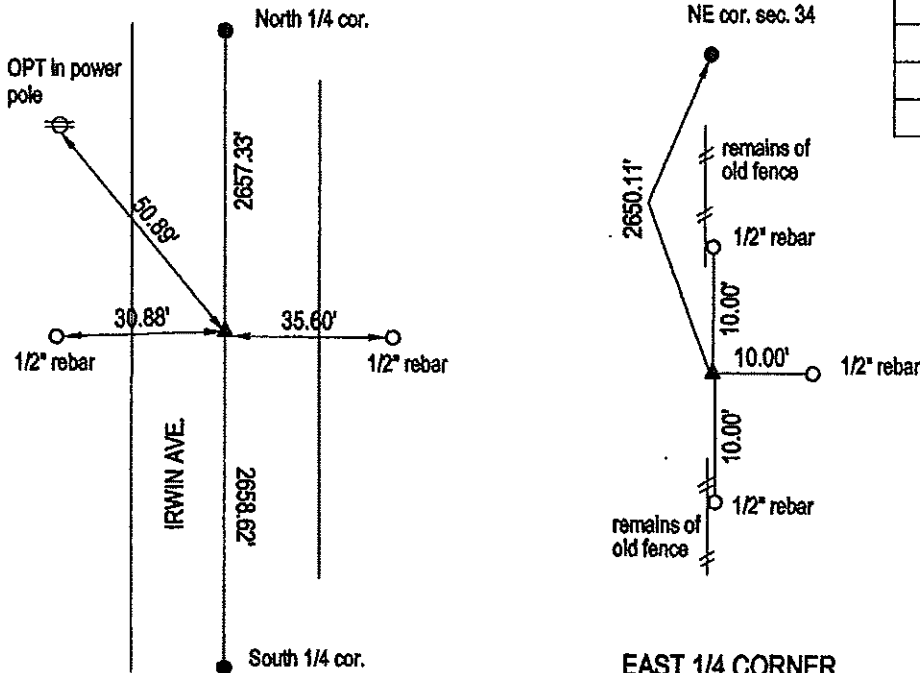
(SHOW REASON FOR PREPARING THIS CERTIFICATE, THE EVIDENCE AND DETAILED PROCEDURES USED IN ESTABLISHING THE
 CORNER POSITIONS AND MONUMENTATION FOUND OR PLACED.)

MONUMENT DESCRIPTION AND REMARKS:

Found no certificate recorded for either corner. At Center of section searched at approximate location with locator but found nothing. County did not have ties for this corner or list monumentation for corner Set pin with cap on line between north 1/4 and south 1/4 and at prorated dimension between the two corners as shown on County tie sheet. Survey in section 35 recorded as document 2002-0542 shows corner set at West 1/4 corner of section 35. Searched area at distance shown from northwest corner and at fence line but found nothing. We then computed location for corner using bearings and distances shown on plat. This came to area where fence line had been cleared, Checked again with locator but found nothing. Then dug at location and found nothing. Believed pin may have been removed when fence line was cleared, Set 1/2" rebar with cap at calculated position.

PLAN VIEW

(SHOW A MINIMUM OF THREE REFERENCE TIES TO DURABLE PHYSICAL OBJECTS, RELEVANT MONUMENTS AND PHYSICAL
 CONDITIONS THAT WILL ENABLE RECOVERY OF THE CORNER.)

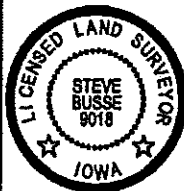


CENTER SECTION

Cor. O

EAST 1/4 CORNER

Cor. C



I HEREBY CERTIFY THAT THIS LAND SURVEYING DOCUMENT
 WAS PREPARED AND THE RELATED SURVEY WORK WAS
 PERFORMED BY ME OR UNDER MY DIRECT PERSONAL
 SUPERVISION AND THAT I AM A DULY LICENSED LAND
 SURVEYOR UNDER THE LAWS OF THE STATE OF IOWA.

Steve Busse 3/19/11
 STEVE BUSSE DATE

LICENSE NUMBER 9018
 MY LICENSE RENEWAL DATE IS DECEMBER 31, 2012
 PAGES OR SHEETS COVERED BY THIS SEAL 1

G.P. = 2" GAS PIPE
 CONC MONU = CONCRETE MONUMENT W/ PIN & ALUM CAP
 "X NAILS" = CROSS NAILS IN WOOD POST
 OPT = PLASTIC TAG (O=ORANGE, Y=YELLOW)
 (00) RECORDED AS

LIST CORNERS TO BE INDEXED			
CORNER	SECTION	TOWNSHIP	RANGE
CENTER	34	94	13
EAST 1/4 COR.	34	94	13