

Prepared by & Return to: Herold - Reicks Surveying, 10 East Main Street, New Hampton, IA 50659, Ph. 515-394-2725

### United States Public Land Survey Corner Certificate

Land Survey Monument situated in  
 Section ~~34~~<sup>27</sup>, Township 94 North, Range 13 West of the Fifth Principal Meridian, Chickasaw County, Iowa.  
 On file in Document #2011-0472 in the County Recorder's office.

This certificate is being prepared in compliance with Iowa Code Chapter 355.11 because:

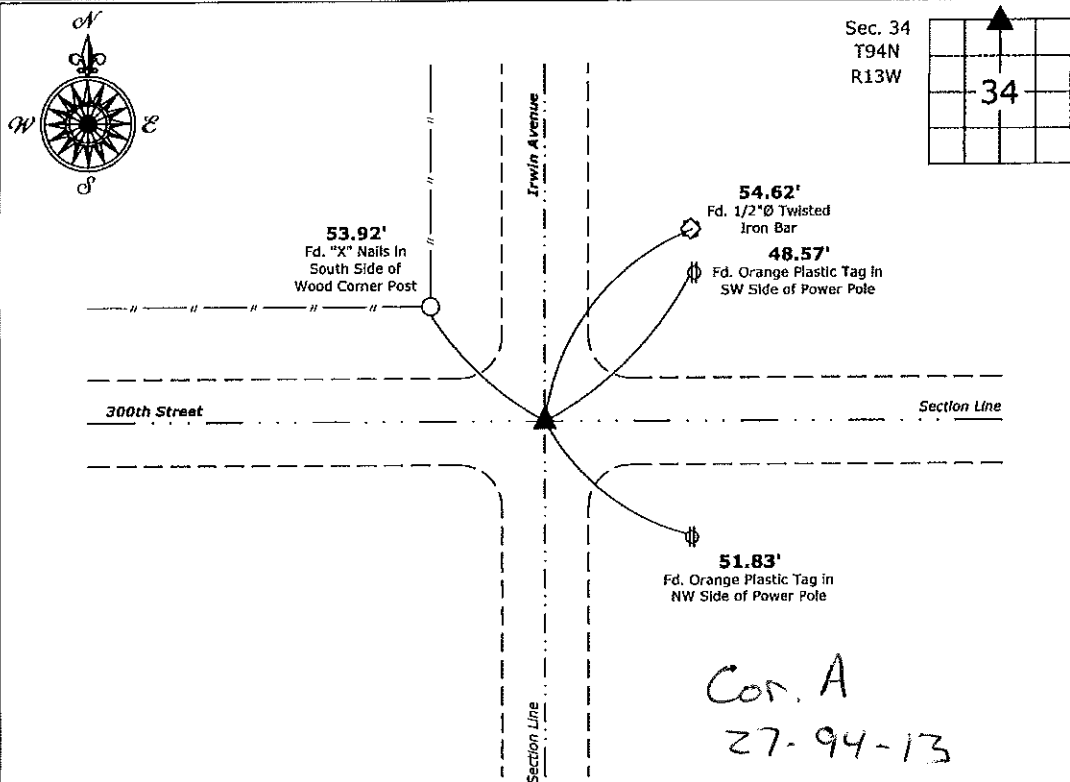
- There is no certificate on file for this corner.
- There are no longer three valid ties of record.
- There are changes to reference ties of record.
- There is change of monumentation of record.
- To clarify description of record monument (ties).

**Monument Description and Remarks:**

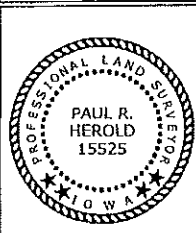
**N 1/4 Corner:** Fd. 1/2" Twisted Square Iron Bar with information obtained from the previously recorded Section Corner Certificate, the monument was incorrectly described as a 1/2"Ø Rebar, all ties check and verify the same position.

#### Plan View

(Show a minimum of three reference ties to durable physical objects, relevant monuments and physical conditions that will enable recovery of the corner.)



**N 1/4 Corner of Section 34-94-13**  
 Fd. 1/2" Twisted Square Iron Bar



I hereby certify that this land surveying document was prepared and the related survey work was performed by me or under my direct personal supervision and that I am a duly licensed Land Surveyor under the laws of the State of Iowa.

*Paul R. Herold* 1-26-18  
 Paul R. Herold Date:  
 License number 15525  
 My license renewal date is December 31, 2018.  
 Sheets covered by this seal: Individual sheet only

List Corner to be Indexed			
Corner	Section	Twp.	Range
N 1/4	34	94	13
Project Number: 2017-144			
FB: Chickasaw County 8, Pgs. 51-52			

File: S:\\_C3D Projects\County Control Systems\CHICKASAW\CHICK-46\CHICK-48.dwg, 1/26/2018 2:26:33 PM

Section 34-94-13  
 As referred to in  
 Engr. Tie Book

FILED 2002-0660  
 RECORDER'S OFFICE  
 CHICKASAW COUNTY, IOWA  
 2002 MAR 11 9 41 AM '02

CINDY MESSERSMITH  
 COUNTY RECORDER  
 ALLISON, IOWA 50602 219-267-2519  
 STEVE BUSSE P.O. BOX 241 508 ELM STREET ALLISON, IOWA 50602

Chickasaw Co  
34-94-13

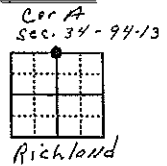
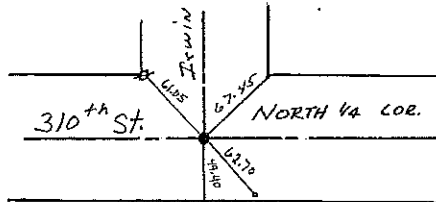
UNITED STATES PUBLIC LAND SURVEY CORNER CERTIFICATE  
 Land Survey Monuments situated in Section 3 34 Township 95 North  
 Range 13 West Of the Fifth Principal Meridian, Bremer County, Iowa.  
 Previously recorded in N/A In County Recorder's Office.

(Show reason for preparing this certificate, the evidence and detailed procedures used in establishing the corner positions and monumentation found or placed.)

Monument Description and Remarks: Found 5/8" rebar 18" deep in center of intersection. On fence line to south. Raised with 1/2" rebar with yellow cap # 9018

PLAN - VIEW

(Show a minimum of three reference ties to durable physical objects, relevant monuments and physical conditions that will enable recovery of the corner)



49.40' South to "x" nails corner & post Cor A  
 61.05' NW to "x" nails in power pole 34-94-13  
 67.45' NE to "x" nails in wood post  
 62.70' SE to tag in wood post at telephone box

I hereby certify that the survey work was completed and this land surveying document was prepared by me or under my direct personal supervision and that I am a duly licensed land surveyor under the laws of the state of Iowa.

Signature: Steve Busse  
 Name typed & printed: STEVE BUSSE

Date: 3/18/02 Reg. No. 9018

My license renewal date is December 31, 2002.

SEAL

Corners	List Corners to be Indexed		
	Section	Twp	Range
N 1/4 COR.	3	93	13
S 1/4 COR.	34	94	13

File 4-1-02