



Prepared by & Return to: Herold - Reicks Surveying, 10 East Main Street, New Hampton, IA 50659, Ph. 644-394-2725

United States Public Land Survey Corner Certificate

Land Survey Monument situated in
 Section 34, Township 94 North, Range 13 West of the Fifth Principal Meridian, Chickasaw County, Iowa.
 On file in Document #2011-0472 in the County Recorder's office.

This certificate is being prepared in compliance with Iowa Code Chapter 355.11 because:



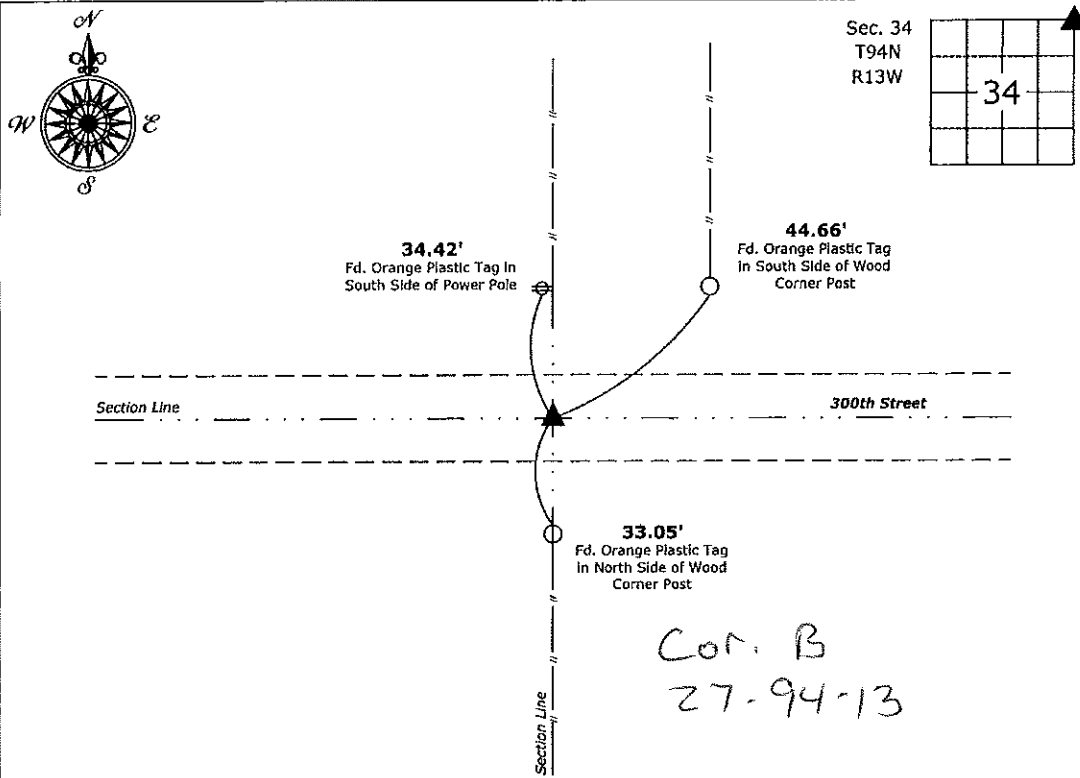
- There is no certificate on file for this corner.
- There are no longer three valid ties of record.
- There are changes to reference ties of record.
- There is change of monumentation of record.
- To clarify description of record monument (ties).

Monument Description and Remarks:

NE Corner: Fd. 3"Ø I.D.O.T. Alum Disk with information obtained from the previously recorded Section Corner Certificate, the monument was incorrectly described as a 1/2"Ø Rebar w/2"Ø Alum. Cap PLS 7060, all ties check and verify the same position.

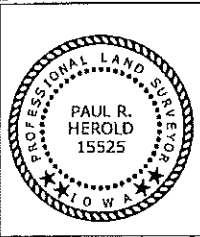
Plan View

(Show a minimum of three reference ties to durable physical objects, relevant monuments and physical conditions that will enable recovery of the corner.)



Cor. B
 27-94-13

NE Corner of Section 34-94-13
 Fd. 3"Ø I.D.O.T. Alum Disk



I hereby certify that this land surveying document was prepared and the related survey work was performed by me or under my direct personal supervision and that I am a duly licensed Land Surveyor under the laws of the State of Iowa.

Paul R. Herold 1-26-18
 Paul R. Herold Date:
 License number 15525
 My license renewal date is December 31, 2018.
 Sheets covered by this seal: Individual sheet only

List Corner to be Indexed

Corner	Section	Twp.	Range
NE	34	94	13

Project Number: 2017-144

FB: Chickasaw County 8, Pgs. 51-52

File: S:_CAD Projects\County Control Systems\CHICKASAW\CHICK-48\CHICK-48.dwg, 1/26/2018 2:26:42 PM