

Section 36-94-13  
 As referred to in  
 Engr. T.C. Book

04243  
 DOCUMENT NO. FILED FOR RECORD THE 21st DAY OF December 19 99 AT 9:21  
 RECORDING FEE \$ 6.00  
 TRANSFER FEE \$  
 O'CLOCK A. M. BOOK 174 PAGE 216  
 STATE OF IOWA, CHICKASAW COUNTY  
 Cindy M. Merritt Recorder  
 Ashley M. Froman Deputy

J. Clifton Froman, LS, 711 Park Avenue, Ackley, IA 50601 Ph 515-847-3273

UNITED STATES PUBLIC LAND SURVEY CORNER CERTIFICATE  
 OF 31 36

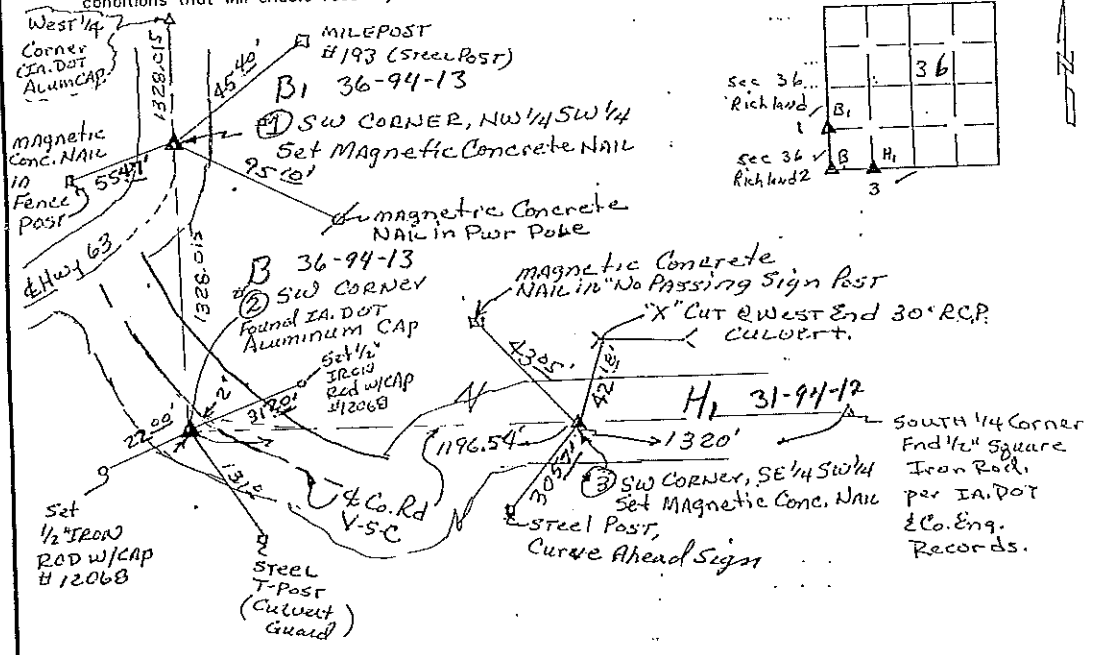
Land Survey Monuments situated in Section 31, Township 94 North, Range 12 West, of the Fifth Principal Meridian, Chickasaw County, Iowa.

Previously recorded in N/A. In County Recorder's Office  
 (Show reason for preparing this certificate, the evidence and detailed procedures used in establishing the corner positions and monumentation found or placed.)

Monument Description and Remarks: No certificates on file for these corners.  
 (1) SW Corner, NW 1/4 SW 1/4 - Set magnetic concrete NAIL in  
 r. & A.C.C. Pavement, U.S. Hwy 63, at Split of West Line SW 1/4.  
 (2) SW Corner - Found IA, DOT Aluminum CAP Section Corner Monument.

PLAN VIEW

(Show a minimum of three reference ties to durable physical objects, relevant monuments, and physical conditions that will enable recovery of the corner.)



FB 161, P. 35-43

I hereby certify that this land surveying document was prepared and the related survey work was performed by me or under my direct personal supervision and that I am a duly licensed Land Surveyor under the laws of the State of Iowa.

J. Clifton Froman  
 Date: 12/14/99 License number: 12068  
 My license renewal date is December 31, 2000



Corners	Section	Twp	Range
NW Corner, SW 1/4 SW 1/4	31	94 N	12 W
SW Corner	31	94 N	12 W
SW Corner, SE 1/4 SW 1/4	31	94 N	12 W

Pages or sheets covered by this seal: 1 of 1