

Section 35-94-13  
 As referred to in  
 Engr. TIC Book

FILED 2001 - 1440  
 RECORDER'S OFFICE  
 CHICKASAW COUNTY, IOWA  
*See #1200*  
 2001 JUL 16 AM 9 04

CINDY MESSERSMITH  
 COUNTY RECORDER

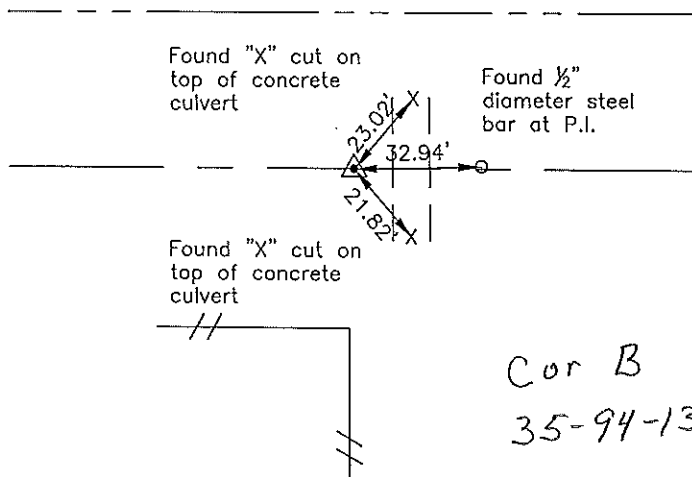
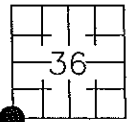
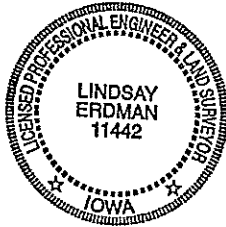
Prepared by: Erdman Engineering, P.C. 708 Commerce Drive, P.O. Box 246 Decorah, Iowa 52101,(563)382-4194

United States Public Land Survey Corner Certificate  
 of 35

Land Survey Monuments situated in Section 36, Township 94, Range 13 West of the 5th Principal Meridian in Chickasaw County, Iowa. Previously recorded in does not apply in the county Recorder's Office.

Monument Description and Remarks: This certificate is prepared in accordance with Section 193C of the Code of Iowa. No previous certificate has been filed for this corner location. Based on the plat of survey recorded in Book 128 page 285 in the Chickasaw County Recorder's Office, we found a steel pipe with a red plastic cap (no legible number) that matches the description of the monument previously used as the SW Corner of Section 36, Township 94 North, Range 13 West.

Plan-View



I hereby certify that the survey work was completed and this certificate was prepared by me, or under my direct supervision and that I am a  ~~duly~~ registered land surveyor under the laws of the State of Iowa.

Signature *Lindsay Erdman*  
 Lindsay Erdman, P.E. and L.S.

Date: 7/12/01 Reg. No. 11442

My license renewal date is December 31, 2002

Corner(s) to be Indexed

Corner	Section	Township	Range
SW	36	94	13

*entered 1-15-02*

Section 36-94-13  
 As referred to in  
 Engr. T.C. Book

04243  
 DOCUMENT NO. FILED FOR RECORD THE 21st DAY OF December 19 99 AT 9:21  
 RECORDING FEE \$ 6.00  
 TRANSFER FEE \$  
 O'CLOCK A. M. BOOK 174 PAGE 216  
 STATE OF IOWA, CHICKASAW COUNTY  
 Cindy M. Merritt Recorder  
 Ashley M. Froman Deputy

J. Clifton Froman, LS, 711 Park Avenue, Ackley, IA 50601 Ph 515-847-3273

UNITED STATES PUBLIC LAND SURVEY CORNER CERTIFICATE  
 OF 31 36

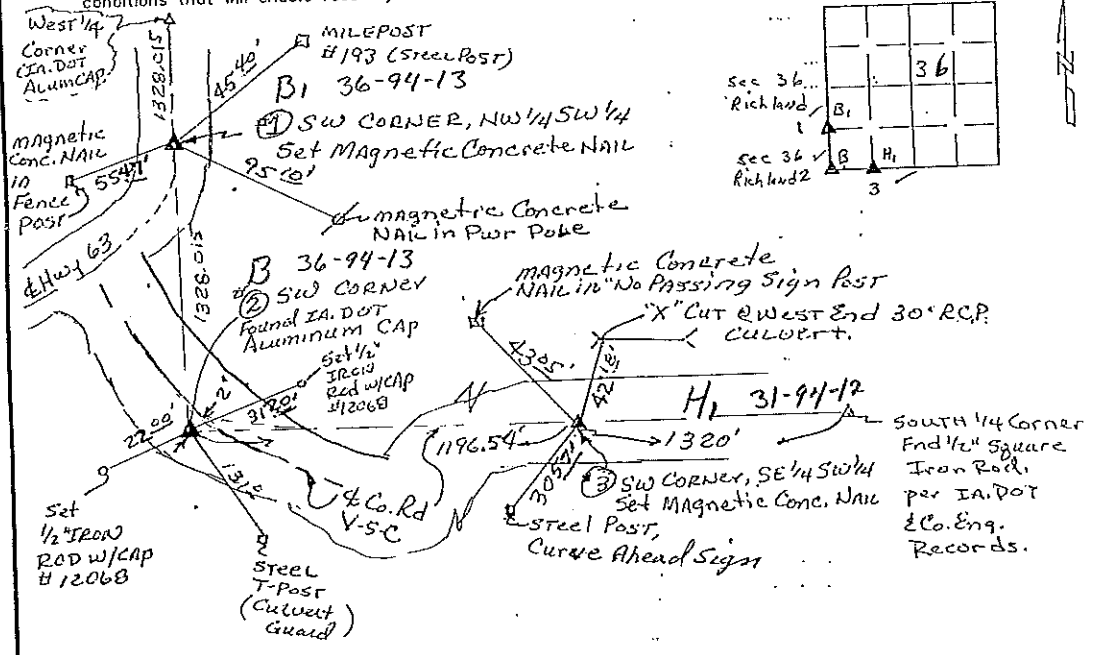
Land Survey Monuments situated in Section 31, Township 94 North, Range 12 West, of the Fifth Principal Meridian, Chickasaw County, Iowa.

Previously recorded in N/A. In County Recorder's Office  
 (Show reason for preparing this certificate, the evidence and detailed procedures used in establishing the corner positions and monumentation found or placed.)

Monument Description and Remarks: No certificates on file for these corners.  
 (1) SW Corner, NW 1/4 SW 1/4 - Set magnetic concrete NAIL in  
 r. & A.C.C. Pavement, U.S. Hwy 63, at Split of West Line SW 1/4.  
 (2) SW Corner - Found IA, DOT Aluminum CAP Section Corner Monument.

PLAN VIEW

(Show a minimum of three reference ties to durable physical objects, relevant monuments, and physical conditions that will enable recovery of the corner.)



FB 161, P. 35-43

I hereby certify that this land surveying document was prepared and the related survey work was performed by me or under my direct personal supervision and that I am a duly licensed Land Surveyor under the laws of the State of Iowa.

J. Clifton Froman  
 Date: 12/14/99 License number: 12068  
 My license renewal date is December 31, 2000



Pages or sheets covered by this seal: 1 of 1

Corners	Section	Twp	Range
NW Corner, SW 1/4 SW 1/4	31	94 N	12 W
SW Corner	31	94 N	12 W
SW Corner, SE 1/4 SW 1/4	31	94 N	12 W