

FILED 2001-1475

RECORDER'S OFFICE
CHICKASAW COUNTY, IOWA

2001 JUL 19 ^{fee 6.00} AM 9 27

CINDY MESSERSMITH
COUNTY RECORDER

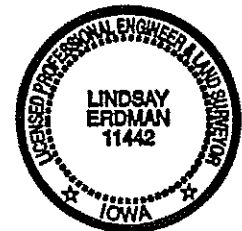
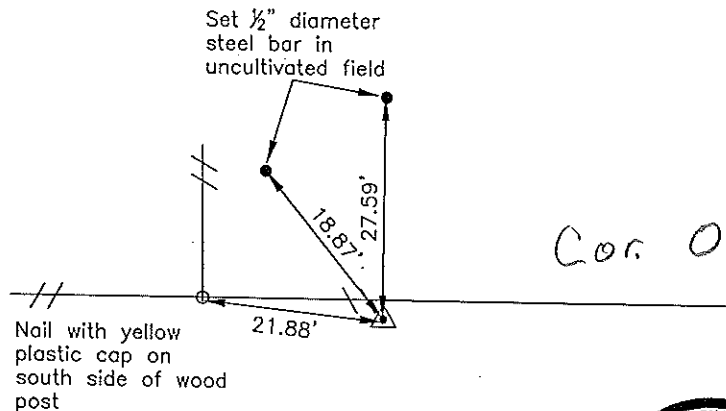
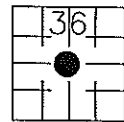
Prepared by: Erdman Engineering, P.C. 708 Commerce Drive, P.O. Box 246 Decorah, Iowa 52101, (563)382-4194

United States Public Land Survey Corner Certificate
of

Land Survey Monuments situated in Section 36, Township 94, Range 13 West of the 5th Principal Meridian in Chickasaw County, Iowa. Previously recorded in does not apply in the county Recorder's Office.

Monument Description and Remarks: This certificate is prepared in accordance with Section 193C of the Code of Iowa. No previous certificate has been filed for this corner location. We found no record of the Center Section being set. We found no evidence of a monument in the field. We found the SW Corner, S 1/4 Corner and the N 1/4 Corner, the recorded bearing and distance from the SW Corner to the S 1/4 is N 89°57'40" W 2611.84', based on the Plot of Survey recorded in Book 128 page 285 in the Chickasaw County Recorder's Office. We set a 1/2" diameter steel bar with yellow plastic cap #11442 at the recorded bearing and distance (N 00°06'04" E 2652.00') from the S 1/4 Corner as the Center Section of Section 36, Township 94 North, Range 13 West.

Plan-View



I hereby certify that the survey work was completed and this certificate was prepared by me or under my direct supervision and that I am a duly registered land surveyor under the laws of the State of Iowa.

Signature: [Signature]
Lindsay Erdman, P.E. and L.S.

Date: 7/19/01 Reg. No. 11442

My license renewal date is December 31, 2002

Corner(s) to be Indexed

Corner	Section	Township	Range
C.S.	36	94	13

Entered 1-15-02