

Prepared by & Return to: Herold - Reicks Surveying, 10 East Main Street, New Hampton, IA 50659, Ph. 641-394-2725

United States Public Land Survey Corner Certificate

Land Survey Monument situated in
 Section 36, Township 94 North, Range 13 West of the Fifth Principal Meridian, Chickasaw County, Iowa.
 On file in Document #2001-1806 in the County Recorder's office.

This certificate is being prepared in compliance with Iowa Code Chapter 355.11 because:

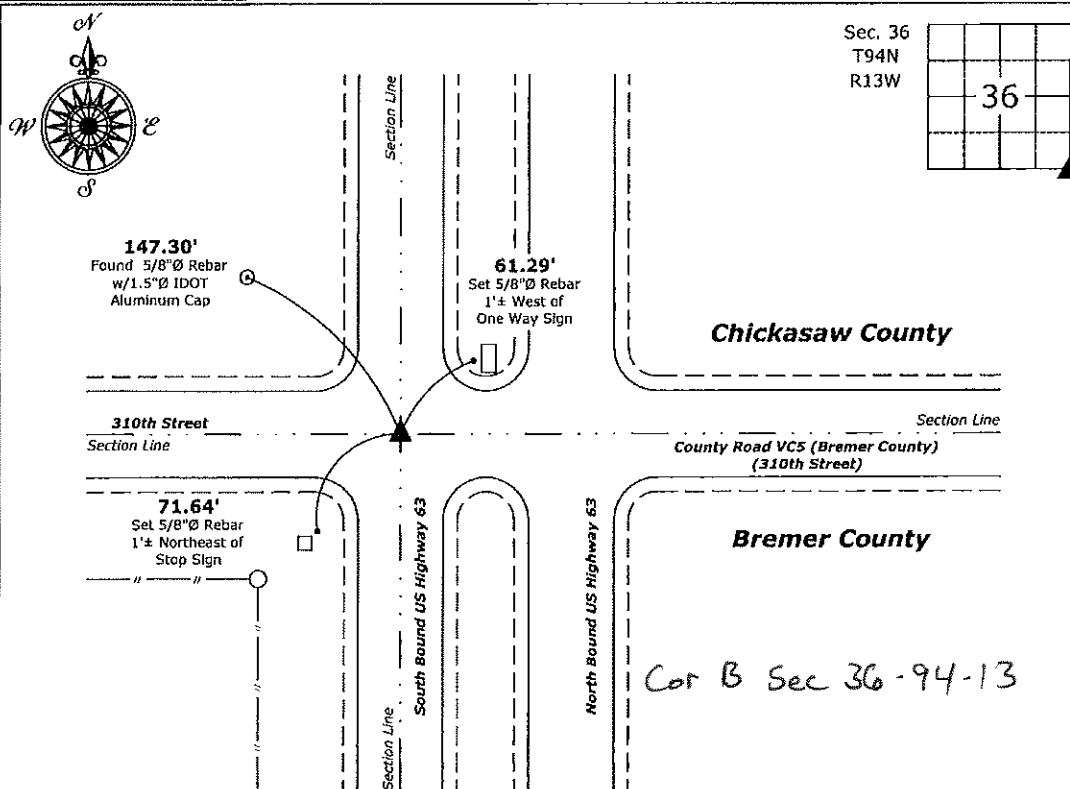
- There is no certificate on file for this corner.
- There are no longer three valid ties of record.
- There are changes to reference ties of record.
- There is change of monumentation of record.
- To clarify description of record monument (ties).

Monument Description and Remarks:

Southeast Corner: Found 1"Ø Bronze Survey Marker PLS 10898 with information obtained from the previously recorded Section Corner Certificate, the Corner was re-monumented by the Iowa Department of Transportation after the completion of the U.S. Highway 63 improvement project.

Plan View

(Show a minimum of three reference ties to durable physical objects, relevant monuments and physical conditions that will enable recovery of the corner.)



Southeast Corner of Section 36-94-13
 Found 1"Ø Bronze Survey Marker PLS 10898



I hereby certify that this land surveying document was prepared and the related survey work was performed by me or under my direct personal supervision and that I am a duly licensed Land Surveyor under the laws of the State of Iowa.

Paul R. Herold 12-14-17
 Paul R. Herold Date:
 License number 15525
 My license renewal date is December 31, 2018.
 Sheets covered by this seal: Individual sheet only

List Corner to be Indexed			
Corner	Section	Twp.	Range
SE	36	94	13
SW	31	94	12

Project Number: 2017-118
 FB: Chickasaw 9, Pgs. 14

File: S:_C3D Projects\County Control Systems\CHICKSAW\CHICK-48\CHICK-48.dwg, 12/14/2017 9:32:42 AM